

# Consent Agenda

**August 1, 2023**

**MET IN REGULAR SESSION**

The Board of Supervisors met in regular session at 10:00 A.M. All members present with Supervisor Jorgensen attending via phone. Chairman Shea presiding.

**PLEDGE OF ALLEGIANCE**

**1. CONSENT AGENDA**

After discussion was held by the Board, a motion was made by Miller, and second by Belt, to approve:

- A. July 25, 2023, Minutes as read.
- B. Thriving Families Alliance – Employment of Tiffani Pinkerton as a Collaborative Director.
- C. Treasurer – Employment of Lynnette Bayer as a Clerk II.
- D. Renewal of Class E Liquor License (LE), granting privileges of Class E Liquor (LE) to Casey's Marketing Company d/b/a Casey's General Store #3204, Minden.

UNANIMOUS VOTE. Motion Carried.

**2. SCHEDULED SESSIONS**

Motion made by Belt, second by Miller, to approve and authorize Chairman to sign contract between MAPA and Pottawattamie County GIS for FY24 GIS Activities.

UNANIMOUS VOTE. Motion Carried.

Motion by Miller, second by Belt, to approve letter of support for MAPA for a PROTECT Planning grant application for safety enhancements for county and city infrastructure facilities.

UNANIMOUS VOTE. Motion Carried.

Melvyn Houser/Counter Auditor appeared before the Board to provide an update on the NACo Annual Conference.

Discussion only. No action taken.

**3. COMMITTEE APPOINTMENTS**

Board discussed Committee meetings from the past week.

Discussion only. No action taken.

**4. RECEIVED/FILED**

**A. Salary Action(s):**

- 1) Jail – Payroll status change for Mike Schleimer, Tim Adland, Teddy Gillespie, Matt O'Donnell, and Patti Amos.
- 2) Sheriff's Office – Payroll status change for Lee Volkens, Stephanie Shea-Kammerer, Doug Kelsey, Jeremy Petersen, and Anthony Leick.
- 3) Public Health – Payroll status change for Angela Walker.

**B. Report(s):**

- 1) Sheriff's Report of Fees Disbursed and Collected for June 2023.

**5. PUBLIC COMMENTS**

No Public Comments.

**6. SCHEDULED SESSIONS**

Motion by Belt, second by Wichman, to concur with staff recommendation for termination of Jeff Miller.

**Roll Call Vote: AYES: Shea, Belt, Wichman, Miller, Jorgensen. Motion Carried.**

**7. ADJOURN**

Motion by Wichman, second by Miller, to adjourn meeting.

UNANIMOUS VOTE. Motion Carried.

THE BOARD ADJOURNED SUBJECT TO CALL AT 10:20 A. M.

---

Brian Shea, Chairman

ATTEST: \_\_\_\_\_  
Melvyn Houser, County Auditor

APPROVED: August 8, 2023

PUBLISH: X

**I, Melvyn Houser, Auditor of Pottawattamie County, verify the following to be a correct copy of all claims allowed by the Pottawattamie County Board of Supervisors for the month of July 2023.**

Vendor Name	Payable Description	Total Payments
3312 WEST BROADWAY PROPERTIES LLC	RENT - PUB HEALTH	1,591.81
4IMPRINT INC	SUPPLIES - PUB HEALTH	5,301.42
ABBIE ASHCRAFT	REIMB EXP - SWIA MHDS REGION	82.14
ABLE LOCKSMITHS	PROF SVC - CONSERVATION	417.10
ACCURATE LAWN & IRRIGATION LLC	PROF SVC - B&G	2,588.00
ACME RESTORATIONS INC	PROF SVC - SHERIFF	2,417.19
ADAM KLEIN	REIMB EXP - IT	29.08
ADVANCE SOUTHWEST IOWA CORPORATION	PROF SVC - BOARD	37,500.00
ADVANCED AUDIO VISUAL INC	PROF SVC - IT	12,383.03
AGRIVISION GROUP LLC	SUPPLIES - CONSERVATION	290.30
AIRGAS INC	ROADS/RENT	34.98
ALEGENT CREIGHTON CLINIC	MED SVC - BOARD	2,385.86
ALEGENT HEALTH BERGAN MERCY HEALTH SYSTEM	MED SVC - JAIL	6,233.83
ALL COPY PRODUCTS INC	PROF SVC - WIC	194.86
ALL MAKES OFFICE EQUIPMENT CO	EQUIP - DHS	2,379.00
ALLEY POYNER MACCHIETTO ARCHITECTURE INCORPORATED	PROF SVC - NON-DEPARTMENTAL	43,060.90
ALPINE CHIMNEY SWEEP INC	PROF SVC - CONSERVATION	3,040.50
AMANDA HEIMS	LEGAL REP - BOARD	4,050.00
AMAZON CAPITAL SERVICES INC	EQUIP - BOARD	11,254.46
AMERICAN NATIONAL BANK	ROADS/MULT ACCOUNTS	32,870.73
AMERITECH SOLUTIONS	SUPPLIES - WIC	118.00
ANTHONY KAVA	REIMB EXP - SHERIFF	231.08
ARAMARK UNIFORM & CAREER APAREL GROUP INC	SUPPLIES - JAIL	60,504.46
ARROWHEAD SCIENTIFIC INC	SUPPLIES - SHERIFF	762.65
ASP ENTERPRISES INC	SUPPLIES - CONSERVATION	211.00
AT&T MOBILITY LLC	MO BILL - EMA	379.55
AUDITOR OF STATE	PROF SVC - BOARD	125,893.60
AVI-SPL LLC	EQUIP - BOARD	43,239.39
BARBARA CHENEY	REIMB EXP - SWIA MHDS REGION	207.64
BAUER BUILT INC	ROADS/TIRES	4,591.36
BELIN MCCORMICK PC	DRAINAGE - C&R - PROF SVC	943.00
BENTLEY FARMS LLC	LANDSCAPING - WEST POTT SWCD	1,820.50
BILLS WATER CONDITIONING INC	MO BILL - JAIL	748.87
BILLYS INC	SUPPLIES - CONSERVATION	181.00
BISHOP BUSINESS EQUIPMENT COMPANY	SUPPLIES - AUDITOR	935.77
BLACK HILLS UTILITY HOLDING	MO BILL - JAIL	1,891.81
BLUFFS PAVING & UTILITY COMPANY INC	PROF SVC - NON-DEPARTMENTAL	49,255.80
BOB BARKER COMPANY INC	SUPPLIES - JAIL	362.96
BODE DUE INC	ROADS/TIRE REPAIR - 326	98.00
BOLTON & MENK INC	DRAINAGE - C&R - PROF SVC	37,336.16
BOMGAARS SUPPLY INC	SUPPLIES - B&G	1,835.95
BOO INC	PROF SVC - CONSERVATION	1,045.50
BP ENTERPRISES INC	PROF SVC - SHERIFF	1,603.76
BRADLEY KNOTT	RENT ASSIST - GA	420.00
BREDA TELEPHONE CORPORATION	MO BILL - COMMUNICATIONS	734.00
BRETT FRANKLIN COOK	PROF SVC - CONSERVATION	141,354.00
BRIAN MILLER	REIMB EXP - SHERIFF	100.00
BRIAN MCMILLIN	PROF SVC - SWIA MHDS REGION	1,500.00
BRIAN SHEA	REIMB EXP - BOARD	1,004.77
BRUMLEY SUPPLIES LLC	ROADS/SUPPLIES - CENTRAL	8,864.72
BUCKLEY POWDER CO	DRAINAGE - C&R - CONSTRUCT/MAINT	3,192.00
C & A SCALES SERVICE INC	PROF SVC - ENV HEALTH	884.02
C & J INDUSTRIAL SUPPLY INC	ROADS/UTILITIES - UNDERWOOD	189.75
CAPITAL SANITARY SUPPLY CO INC	SUPPLIES - JAIL	2,163.68
CASS COUNTY (IA)	MHA - SWIA MHDS REGION	3,950.20
CEN PRO	SUPPLIES - PUB HEALTH	600.00
CENTRAL IOWA HOSPITAL CORPORATION	TRAINING - PUB HEALTH	155.00
CENTRAL IOWA JUVENILE DETENTION CENTER	TRANSPORT - SWIA MHDS REGION	478.17
CENTURY LINK COMMUNICATIONS LLC	MO BILL - COMMUNICATIONS	38,666.65
CENTURYLINK INC	ROADS/UTILITIES	1,374.34
CHAMPLIN TIRE RECYCLING INC	PROF SVC - ENV HEALTH	1,089.28
CHASITY KEPHART	REIMB EXP - SWIA MHDS REGION	101.66
CHECKETTS LAW PLC	LEGAL REP - BOARD	900.56
CHRISTOPHER JON ELLIOTT	MED SVC - MED EXAMINER	6,666.67
CINTAS CORPORATION NO 2	ROADS/SUPPLIES	290.76
CITIBANK NA	SUPPLIES - B&G	141.47
CITY OF AVOCA	ROADS/UTILITIES	7.92
CITY OF CARSON	ROADS/UTILITIES	68.34
CITY OF COUNCIL BLUFFS	TRANSPORT - JAIL	2,911.00
CITY OF HANCOCK	MO BILL - CONSERVATION	373.88
CITY OF LOGAN	RENT - WIC	100.00



CITY OF MCCLELLAND	ROADS/RUTF	6,295.98
CITY OF OAKLAND	MO BILL - ENV HEALTH	25.00
CITY OF ONAWA	RENT - WIC	60.00
COMMERCIAL FARM INDUSTRIAL TIRE SERVICE INC	ROADS/TIRES -453	3,981.00
CONCERNED INC	SUPPORT SVC - SWIA MHDS REGION	571.78
CORNHUSKER INTERNATIONAL TRUCKS INC	ROADS/PARTS	117.43
CORPORATE TRANSLATION SERVICES INC	PROF SVC - WIC	389.65
COUNCIL BLUFFS CHAMBER OF COMMERCE	MEMBERSHIP - BOARD	375.00
COUNCIL BLUFFS WATER WORKS	MO BILL - JAIL	5,978.98
COX COMMUNICATIONS INC	MO BILLING - VARIOUS	4,950.78
CREDIT BUREAU OF COUNCIL BLUFFS INC	PROF SVC - JAIL	25.50
CROWL PROPERTY MANAGEMENT INC	RENT ASSIST - GA	500.00
CRYSTAL CLEAR WATER INC	MO BILL - RECORDER	50.50
CTM MEDIA GROUP INC	PROF SVC - BOARD	9,600.00
CUTLER ONEILL INC	PROF SVC - GA	400.00
DANELLE BRUCE	REIMB EXP - SWIA MHDS REGION	366.80
DAVE LYON TOWING & REPAIR LLC	ROADS/SERVICES - 404	300.00
DAVES PLACE LLC	MED SVC - SWIA MHDS REGION	18,586.58
DAVID C ANDERSEN	RENT ASSIST - GA	500.00
DEBBIE SCHULER	REIMB EXP - SWIA MHDS REGION	108.14
DECISIONS FOR LIFE LLC	SUPPORT SVC - SWIA MHDS REGION	1,125.00
DELAWARE DUBUQUE AND JACKSON COUNTY REGIONAL TRANSIT AUTHORITY	TRANSPORT - SWIA MHDS REGION	301.28
DELL MARKETING LP	EQUIP - HR/RISK	1,648.60
DIAMOND OIL COMPANY	FUEL - CONSERVATION	2,444.97
DONALD NIELSON	PUBLICATIONS - BOARD	227.16
DONALD NIELSON	PUBLICATIONS - BOARD	928.83
DONALD W MATHEWS	PROF SVC - SHERIFF	2,913.20
DOUGLAS COUNTY (NE)	SVC FEES - COMMUNICATIONS	143,119.96
EAST POTTAWATTAMIE SWCD	SEMI ANNUAL SUPP - EAST POTT SWCD	40,000.00
ECHO GROUP INC	SUPPLIES - B&G	332.57
ECHOSAT INC	ROADS/UTILITIES	68.10
EDWARDS CHEVROLET CADILLAC INC	ROADS/PARTS	1,297.80
ELECTION SYSTEMS & SOFTWARE LLC	PROF SVC - AUDITOR	40,360.75
EMBRACE IOWA INC	MED SVC - SWIA MHDS REGION	1,947.00
ERIC STROVERS	REIMB EXP - CO ATTORNEY	344.94
FAMILY INC	SUPPLIES - PUB HEALTH	10,000.00
FARM SERVICE COOPERATIVE	ROADS/FUEL	51,869.96
FARMERS MUTUAL COOPERATIVE TELEPHONE COMPANY	MO BILL - CONSERVATION	608.85
FBI LEEDA INC	TRAINING - JAIL	795.00
FEDERAL SIGNAL CORPORATION	PROF SVC - COMMUNICATIONS	3,753.75
FERRELLGAS LP	PROF SVC - COMMUNICATIONS	102.72
FIDLAR TECHNOLOGIES INC	PROF SVC - RECORDER	16,974.00
FIELD DAY DEVELOPMENT LLC	PROF SVC - NON-DEPARTMENTAL	7,059.51
FIKES COMMERCIAL HYGIENE LLC	ROADS/UTILITIES - UNDERWOOD	350.37
FMTC SWT INC	ROADS/UTILITIES	122.45
FORESTRY SUPPLIERS INC	SUPPLIES - CONSERVATION	164.39
FRONTIER COMMUNICATIONS OF IOWA LLC	MO BILL - COMMUNICATIONS	406.17
GARREANS LAW LLC	LEGAL REP - BOARD	330.00
GENERAL FIRE AND SAFETY EQUIPMENT CO OF OMAHA	PROF SVC - JAIL	133.50
GENIE SERVICES	PROF SVC - PUB HEALTH	55.00
GENUINE PARTS COMPANY INC	ROADS/PARTS	270.96
GEORGE CARR	WELL CLOSURE - ENV HEALTH	500.00
GOVCONNECTION INC	PROF SVC - IT	28,737.48
GRACE UNITED METHODIST CHURCH	RENT - WIC	40.00
GREAT AMERICA FINANCIAL SERVICES CORPORATION	PROF SVC - SWIA MHDS REGION	106.99
GREAT PLAINS COMMUNICATIONS HOLDINGS LLC	MO BILL - IT	1,771.03
GREAT PLAINS PEST SERVICES INC	PROF SVC - JAIL	627.00
GREG MATHIS	PROF SVC - WEST POTT SWCD	253.36
GREGORY L DAVIS	MED SVC - JAIL	1,333.33
GRISWOLD COOPERATIVE TELEPHONE CO	ROADS/UTILITIES	35.78
GRP & ASSOCIATES INC	PROF SVC - JAIL	214.00
GUARDIANS OF NORTHEAST IOWA INC	PROF SVC - SWIA MHDS REGION	900.00
HANEY SHOE STORE INC	ROADS/PPE	14,839.23
HARRISON COUNTY (IA)	TRANSPORT - SWIA MHDS REGION	159.61
HARRISON COUNTY HOMEMAKERS	MED SVC - SWIA MHDS REGION	2,333.55
HARRISON COUNTY RURAL ELECTRIC COOPERATIVE	MO BILL - COMMUNICATIONS	640.34
HAWKEYE TRUCK EQUIPMENT CO INC	ROADS/PARTS	1,154.60
HEARTLAND FAMILY SERVICE	BRIDGES TLP - SWIA MHDS REGION	83,880.00
HEARTLAND PHOTOS & DESIGN INC	PROF SVC - CONSERVATION	949.55
HEARTLAND TIRES AND TREADS INC	ROADS/TIRES - 327	3,195.00
HENRY SCHEIN INC	SUPPLIES - JAIL	414.21
HG OPERATIONS LLC	PROF SVC - CONSERVATION	5,706.20
HGM ASSOCIATES INC	ROADS/ROCK	27,743.86
HOLTZ SERVICE & SMALL ENGINE LLC	ROADS/REPAIR	175.76
HORWATH LAUNDRY MACHINERY COMPANY	PROF SVC - JAIL	202.20

HOSE & HANDLING INC	ROADS/PARTS	1,028.63
HOTSY EQUIPMENT CO	ROADS/SERVICE - UNDERWOOD	1,258.54
HS MEDICAL BILLING SERVICES INC	PROF SVC - PUB HEALTH	9.60
IMAGING SPECTRUM INC	SUPPLIES - RECORDER	287.87
INDOFF INCORPORATED	SUPPLIES - PLANNING	19,148.32
INFOSAFE SHREDDING LLC	PROF SVC - JAIL	507.00
INSIGHT PUBLIC SECTOR	LICENSE - IT	1,569.53
IOWA COMMUNITIES ASSURANCE POOL	MEMBERSHIP - SWIA MHDS REGION	11,710.00
IOWA COUNTY ATTORNEYS ASSOCIATION	REGISTRATION - CO ATTORNEY	2,220.00
IOWA DEPARTMENT OF TRANSPORTATION	ROADS/SUPPLIES	431.88
IOWA DEPT OF NATURAL RESOURCES	ROADS/ANNUAL PERMIT	225.00
IOWA LAW ENFORCEMENT ACADEMY	TRAINING - SHERIFF	350.00
IOWA MUNICIPALITIES WORKERS COMPENSATION ASSOCIATION	WORK COMP - BOARD	24,970.00
IOWA NATURAL HERITAGE FOUNDATION	MEMBERSHIP - CONSERVATION	500.00
IOWA PRISON INDUSTRIES	SUPPLIES - CONSERVATION	951.21
IOWA STATE ASSOCIATION OF COUNTIES	PROF SVC - SWIA MHDS REGION	62,066.96
IOWA TRAVEL INDUSTRY PARTNERS	MEMBERSHIP - BOARD	915.00
IOWA WASTE SERVICES HOLDING INC	MO BILL - JAIL	3,102.40
IOWA WASTE SERVICES HOLDINGS INC	PROF SVC - ENV HEALTH	4,935.38
IP PATHWAYS LLC	ROADS/SUPPLIES	6,543.64
IVAN DELGADO	MED SVC - JAIL	5,554.88
JACKSON SERVICES INC	PROF SVC - B&G	659.80
JAMIE PETERSEN	REIMB EXP - GIS	178.00
JAMIE/AMY CASSON	PROF SVC - SHERIFF	86.48
JDW MIDWEST LLC	PROF SVC - PLANNING	1,900.00
JEBRO INCORPORATED	ROADS/MATERIALS	3,562.90
JEFFREY J BUCKINGHAM	WELL CLOSURE - ENV HEALTH	500.00
JEFFREY W ANDERSEN	PROF SVC - B&G	2,165.38
JEFFS WASH & GLO	PROF SVC - SHERIFF	265.00
JEREDITH BRANDS LLC	MO BILL - B&G	13,028.49
JEREMY YOST	REIMB EXP - CONSERVATION	43.19
JIM HAWK TRUCK TRAILERS INC	ROADS/PARTS	1,342.55
JODI VANDERHEIDEN	TRANSCRIPTS - CO ATTORNEY	42.00
JODIE BECKMAN	REIMB EXP - AUDITOR	35.37
JOHN DEERE FINANCIAL	ROADS/REPAIR	5,019.77
JOHNSON CONTROLS INC	PROF SVC - B&G	791.20
JONES AUTOMOTIVE INC	PROF SVC - SHERIFF	16,914.66
JOSHUA HARKER	REIMB EXP - SHERIFF	30.31
JP LUMBER INC	SUPPLIES - CONSERVATION	222.52
JULIANNE PRUITT	SUPPORT SVC - SWIA MHDS REGION	210.00
JULIE BOUTARD	TRANSCRIPTS - CO ATTORNEY	75.00
KAKISH SCHMIDT AND PARTNERS	ROADS/DRUG SCREENING	240.00
KAMINSKY SULLENBERGER & ASSOCIATES INC	TRAINING - SHERIFF	400.00
KAREN POTTER MAXWELL	PROF SVC - WIC	100.00
KATHRYN STACY	REIMB EXP - SHERIFF	38.06
KELLYS CARPET AND FURNITURE LLC	PROF SVC - CONSERVATION	1,648.00
KERRIE SNYDER	REIMB EXP - CO ATTORNEY	2,023.62
KIESLERS POLICE SUPPLY INC	SUPPLIES - SHERIFF	2,448.40
KONE INC	PROF SVC - JAIL	327.74
KRIS WOOD	REIMB EXP - WIC	42.00
KRISTINA M RICHEY	REIMB EXP - SWIA MHDS REGION	765.70
KRONOS SAASHR INC	PROF SVC - IT	1,197.46
L & M PHARMACY CARE LLC	MED SVC - SWIA MHDS REGION	23.00
LANGUAGE LINE SERVICE INC	MO BILL - JAIL	354.78
LARSEN SUPPLY CO	SUPPLIES - CONSERVATION	2,016.82
LAURENCE WOLLUM	EQUIP - CONSERVATION	897.16
LAW OFFICES OF BRIAN TACKETT LLC	LEGAL REP - SWIA MHDS REGION	524.80
LAWSON PRODUCTS INC	ROADS/SUPPLIES	204.24
LEE BHM CORP	PUBLICATIONS - TREASURER	9,237.67
LEICA GEOSYSTEMS INC	ROADS/SUPPLIES	773.00
LEVRACK LLC	SUPPLIES - SHERIFF	13,125.00
LIFEGUARD MD INC	SUPPLIES - CONSERVATION	185.00
LINDA CONNER	PROF SVC - SHERIFF	570.00
LOCK CRAFTERS LLC	PROF SVC - NON-DEPARTMENTAL	2,367.05
LOGAN CONTRACTORS SUPPLY INC	ROADS/SUPPLIES	220.56
LORI A GRECKEL	TRANSCRIPTS - CO ATTORNEY	17.00
M & J PROPERTIES LLC	RENT - SWIA MHDS REGION	650.00
MALINA DOBSON	REIMB EXP - CO ATTORNEY	1,669.78
MARNE & ELK HORN TELEPHONE COMPANY	MO BILL - COMMUNICATIONS	545.07
MATTHEW WILBER	REIMB EXP - CO ATTORNEY	114.54
MAURA GOALEY	LEGAL REP - BOARD	2,475.00
MCCLURE ENGINEERING	ROADS/SERVICE	8,723.75
MCKESSON MEDICAL-SURGICAL GOVERNMENT SOLUTIONS LLC	SUPPLIES - PUB HEALTH	187.55
MCLAUGHLIN SEPTIC & PORTABLES	PROF SVC - CONSERVATION	255.00
MECO-HENNE CONTRACTING INC	PROF SVC - NON-DEPARTMENTAL	251,419.82

MELVYN HOUSER	REIMB EXP - AUDITOR	74.67
MENARDS INC	SUPPLIES/EQUIP - CONSERVATION	7,488.20
MERCHANTS BONDING COMPANY (MUTUAL)	BONDING - RECORDER	100.00
METAL CULVERTS INC	ROADS/MATERIALS	5,725.30
MICHAEL L SELVES	PROF SVC - SHERIFF	2,465.96
MICHELLE CIESLUK	RENT ASSIST - GA	700.00
MICROFILM IMAGING SYSTEMS INC	PROF SVC - RECORDER	100.00
MIDAMERICAN ENERGY COMPANY	MO BILL - B&G	60,353.14
MIDLANDS HUMANE SOCIETY	CONTRACT - ANIMAL CONTROL	7,835.28
MIDWEST BEDDING COMPANY LLC	PROF SVC - CONSERVATION	3,835.12
MIDWEST CARD & ID SOLUTIONS LLC	PROF SVC - EMA	5,400.00
MIDWEST MEDICAL AND SAFETY INC	SUPPLIES - JAIL	54.05
MIDWEST SERVICE AND SALES CO	ROADS/SUPPLIES	27,881.76
MIDWEST SPRAY TEAM & SALES INC	ROADS/SUPPLIES	3,795.00
MIRANDA WACHTER	REIMB EXP - SWIA MHDS REGION	43.89
MMB LLC	SUPPLIES - CONSERVATION	31.99
MMB LLC	SUPPLIES - CONSERVATION	53.94
MMB LLC	ROADS/PARTS	1,186.02
MMIS HOLDINGS LLC	PROF SVC - CONSERVATION	13,626.44
MONARCA ENTERPRISE LLC	RENT - SWIA MHDS REGION	1,900.00
MONONA COUNTY (IA)	TRANSPORT - SWIA MHDS REGION	577.06
MONTGOMERY COUNTY (IA)	TRANSPORT - SWIA MHDS REGION	812.17
MOTOROLA SOLUTIONS INC	PROF SVC - COMMUNICATIONS	358,600.00
MUNICIPAL HOUSING AGENCY	RENT ASSIST - GA	50.00
MYRA NIXON	REIMB EXP - RECORDER	74.34
NATIONAL ASSOCIATION OF COUNTY ENGINEERS	ROADS/REGISTRATION	745.00
NATIONAL CONCRETE CUTTING INC	PROF SVC - B&G	250.00
NCH CORPORATION	PROF SVC - B&G	359.17
NEBRASKA IOWA INDUSTRIAL FASTENERS CORP	SUPPLIES - CONSERVATION	385.01
NEOLA TIRE INC	SUPPLIES - CONSERVATION	38.00
NEW CENTURY PHYSICIANS OF IOWA PC	MED SVC - JAIL	429.80
NISHNA PRODUCTIONS INC	VOC/DAY HAB/SUP SVC - SWIA MHDS REGION	17,658.32
NISHNABOTNA VALLEY RURAL ELECTRIC COOPERATIVE	ROADS/UTILITIES	2,316.99
NMC GROUP INC	ROADS/SERVICE	7,519.85
OMAHA COMPOUND COMPANY	SUPPLIES - B&G	1,324.01
OMAHA COUNCIL BLUFFS METROPOLITAN AREA PLANNING AGENCY	PROF SVC - GIS	84,634.41
OMAHA DOOR & WINDOW COMPANY INC	ROADS/REPAIR - KEG CRK	3,516.60
OMAHA TRUCK CENTER COMPANY INC	ROADS/PARTS	3,468.05
OMG MIDWEST INC	ROADS/MATERIALS	1,680.96
OMNI CENTRE LLC	RENT - WIC	1,983.00
OPTIMIZED SYSTEMS LLC	PROF SVC - NON-DEPARTMENTAL	13,275.00
OUTDOOR POWER GROUP INC	SUPPLIES - CONSERVATION	197.19
OVERLAND MHP 2 LLC	RENT ASSIST - GA	505.00
PAAL APARTMENTS LLC	RENT ASSIST - GA	93.00
PAGE COUNTY (IA)	PRESCRIPTIONS - SWIA MHDS REGION	1,060.35
PARKWILD HEIGHTS LLC	RENT ASSIST - GA	500.00
PARTEK ENTERPRISES INC	EQUIP - CONSERVATION	5,775.80
PATAGONIA HEALTH INC	PROF SVC - PUB HEALTH	16,560.00
PATRICK RIGG	RENT ASSIST - GA	1,250.00
PETERSEN LAW PLLC	ACQUISITION - BOARD	1,562.50
PHOENIX SUPPLY LLC	SUPPLIES - JAIL	314.00
PITNEY BOWES GLOBAL FINANCIAL SERVICES LLC	PROF SVC - DHS	574.17
PITNEY BOWES INC	PROF SVC - AUDITOR	565.98
POPCO INC	MO BILL - PLANNING	87.75
POTTAWATTAMIE COUNTY BOARD OF SUPERVISORS	INDERECT COST - WIC	6,140.69
POTTAWATTAMIE ARTS/CULTURE ENTERTAINMENT (PACE)	CAPITAL CAMPAIGN - BOARD	25,000.00
POTTAWATTAMIE COUNTY AUDITOR	QTRLY BILLING - SWIA MHDS REGION	475,963.23
POTTAWATTAMIE COUNTY HOUSING TRUST FUND INC	RENT ASSIST - GA	600.00
POTTAWATTAMIE COUNTY IT DEPARTMENT	REIMB LICENSE - SWIA MHDS REGION	761.25
POTTAWATTAMIE COUNTY SHERIFF	TRANSPORT - BOARD	9,938.95
POTTAWATTAMIE COUNTY TREASURER	ROADS/UTILITIES	230.80
POTTAWATTAMIE WIC PROGRAM	REIMB EXP - PUB HEALTH	10,000.00
PRAIRIE CONSTRUCTION COMPANY	ROADS/PAY APP 7 ROC	945,899.07
PROPERTY RECORDS INDUSTRY ASSOCIATION	DUES - RECORDER	145.00
QUADIENT INC	POSTAGE - VARIOUS	5,489.00
QUADIENT LEASING USA INC	PROF SVC - TREASURER	1,278.12
R & S WASTE DISPOSAL LLC	ROADS/UTILITIES	1,402.73
RADIOLOGY CONSULTANTS PC	MED SVC - JAIL	455.70
RAFAEL RODRIGUEZ	REIMB EXP - IT	55.02
RAY ALLEN MANUFACTURING LLC	SUPPLIES - SHERIFF	186.93
RAY MARTIN COMPANY OF OMAHA	PROF SVC - NON-DEPARTMENTAL	5,936.46
RED OAK WELDING SUPPLIES	ROADS/RENT	201.30
REDWOOD TOXICOLOGY LABORATORY INC	MED SVC - JAIL	30.35
REGIONAL WATER INC	MO BILL - CONSERVATION	1,248.50
RESOURCE RENTAL CENTER INC	RENTAL - B&G	682.50

RICHARD C ROSAS	ROADS/REPAIR	355.00
ROLLINS INC	PROF SVC - JAIL	374.00
S & L SANITATION ENTERPRISES INC	MO BILL - CONSERVATION	396.00
SAM ASHER COMPUTING SERVICES INC	MO BILL - IT	244.45
SANDAU BROTHERS SIGN COMPANY INC	PROF SVC - PUB HEALTH	4,275.00
SCHILDBERG CONSTRUCTION COMPANY INC	ROADS/ROCK	80,435.49
SCOTT BELT	REIMB EXP - BOARD	113.54
SEAN NEGUS CONSTRUCTION LLC	DRAINAGE - C&R - CONSTRUCT/MAINT	456,817.48
SHADOW PARK COOPERATIVE	RENT ASSIST - GA	500.00
SHAWN JENSEN	REIMB EXP - JAIL	143.71
SHELBY COUNTY CHRIS A MYRTUE MEMORIAL HOSPITAL	24 HOUR CRISIS - SWIA MHDS REGION	4,000.00
SHELLEY WELTER	REIMB EXP - SWIA MHDS REGION	501.73
SHELLY HOVEY	REIMB EXP - SWIA MHDS REGION	158.51
SHIRLEY BILLINGS	RENT - SWIA MHDS REGION	1,150.00
SMV FEATHERSTONE LLC	RENT ASSIST - GA	1,347.00
SNAP ON INCORPORATED	ROADS/TOOLS	1,388.90
SOLUTIONPOINT	PROF SVC - SWIA MHDS REGION	70,037.56
SOUTHWEST IOWA JUVENILE EMERGENCY SERVICES	QTRLY BILL - BOARD	323,978.89
SOUTHWEST IOWA PLANNING COUNCIL	MEMBERSHIP - BOARD	18,787.99
SPEE DEE DELIVERY SERVICE INC	PROF SVC - DHS	338.45
ST LUKES HEALTH RESOURCES	ROADS/DRUG SCREENING	210.00
STA BILT CONSTRUCTION CO INC	ROADS/PROJECT	451,574.26
STANDARD AUTO SERVICE CORP	PROF SVC - SHERIFF	1,456.35
STAPLES CONTRACT & COMMERCIAL INC	SUPPLIES - DHS	149.37
STAPLES INC	SUPPLIES - IT	1,494.34
STAPLES INC	SUPPLIES - WIC	1,474.26
STAR EQUIPMENT LTD	ROADS/PARTS	1,158.48
STATE OF IOWA	MED SVC - MED EXAMINER	10,316.00
STATE OF IOWA	PROF SVC - CO ATTORNEY	30.00
STATE OF IOWA DEPARTMENT OF JUSTICE	SUPPLIES - CO ATTORNEY	330.00
STATE OF IOWA EDUCATION IOWA PUBLIC BROADCASTING DIVISION	RENT - COMMUNICATIONS	1,264.86
STATE OF IOWA SECRETARY OF STATE	PROF SVC - B&G	140.00
STATE UNIVERSITY OF IOWA	PROF SVC - ENV HEALTH	380.00
STELLAR INDUSTRIES INC	ROADS/PARTS	176.62
STEPHENS PECK INC	PROF SVC - TREASURER	119.00
STERICYCLE INC	PROF SVC - WIC	130.58
SUSAN MILLER	REIMB EXP - BOARD	216.15
SUSANN CONLON	PROF SVC - CONSERVATION	122.50
SUZANNE WATSON	REIMB EXP - SWIA MHDS REGION	441.74
SYMPHONY DIAGNOSTIC SERVICES NO 1	MED SVC - JAIL	414.00
SYNCHRONY BANK	MO BILL - SWIA MHDS REGION	28.76
TARGET SOLUTIONS LEARNING LLC	PROF SVC - EMA	39,060.40
TED COOPERATIVE	RENT - SWIA MHDS REGION	950.00
THE COMMUNITY SUPPORTS NETWORK INC	RENT - SWIA MHDS REGION	453.75
THE FILTER SHOP INC	SUPPLIES - B&G	94.23
THE RETROFIT COMPANIES INC	PROF SVC - ENV HEALTH	547.50
THE SHERWIN WILLIAMS COMPANY	SUPPLIES - B&G	67.01
THE WALDINGER CORPORATION	PROF SVC - PUB HEALTH	10,244.25
THEODORE M GILLESPIE JR	REIMB EXP - JAIL	107.06
THERMO KING CHRISTENSEN	ROADS/PARTS	93.78
THIBAUT SUHR & THIBAUT INC	PROF SVC - CO ATTORNEY	740.70
THIELE GEOTECH INC	ROADS/SERVICE	5,072.00
THINK SPACE IT	PROF SVC - IT	10,522.58
TIMEKEEPING SYSTEMS INC	PROF SVC - JAIL	5,700.00
TINIK INC	ROADS/PARTS	4,558.36
TODD MEYER	PROF SVC - CONSERVATION	49.50
TODD SCHLINES	REIMB EXP - JAIL	118.93
TORYANN CROZIER	PROF SVC - CONSERVATION	845.00
TRANSUNION RISK AND ALTERNATIVE DATA SOLUTIONS INC	PROF SVC - SHERIFF	75.00
TRAVIS HEALY	REIMB EXP - SHERIFF	50.40
TREASURER OF STATE OF IOWA	MED SVC - SWIA MHDS REGION	8,533.73
TREE TOWN KENNELS LLC	PROF SVC - SHERIFF	403.50
TW VENDING INC	SUPPLIES - JAIL	385.18
ULINE INC	SUPPLIES - B&G	3,214.04
UNDERWOOD FARM SUPPLY LLC	SUPPLIES - CONSERVATION	239.50
UNITED STATES CELLULAR CORPORATION	MO BILL - COMMUNICATIONS	643.69
UNIVERSITY OF NORTHERN IOWA	ROADS/REGISTRATION	190.00
US BANK NATIONAL ASSOCIATION	MO BILL - EMA	1,853.82
US BANK NATIONAL ASSOCIATION	MO BILL - SWIA MHDS REGION	136.66
US POSTAL SERVICE (QUADIENT)	POSTAGE - TREASURER	13,000.00
VAN WALL EQUIPMENT	ROADS/PARTS - 613	3,971.63
VERICOR LLC	SUPPLIES - PUB HEALTH	2,930.63
VERIZON COMMUNICATIONS INC	MO BILL - SHERIFF	12,134.66
VERIZON CONNECT FLEET USA LLC	ROADS/UTILITIES	1,280.02
VERTIGIS NORTH AMERICA LTD	PROF SVC - GIS	8,055.00

VISUAL EDGE INC	PROF SVC - SWIA MHDS REGION	38.81
VOCATIONAL DEVELOPMENT CENTER INC	VOC/DAY - SWIA MHDS REGION	17,900.00
W C INVESTMENT CO INC	TRANSPORT - MED EXAMINER	7,350.00
W W GRAINGER INC	ROADS/SUPPLIES	993.91
WALDSTEIN HVAC LLC	PROF SVC - CONSERVATION	409.48
WAUBONSIE MENTAL HEALTH CENTER	PSS - SWIA MHDS REGION	2,500.00
WELLS FARGO FINANCIAL LEASING INC	MO BILL - DHS	971.62
WEST CENTRAL COMMUNITY ACTION	APPROPRIATION - BOARD	15,520.00
WEST PUBLISHING CORPORATION	PROF SVC - CO ATTORNEY	4,957.39
WESTERN ENGINEERING COMPANY INC	ROADS/PROJECT	330,482.43
WESTLAKE HARDWARE INC	SUPPLIES - CONSERVATION	175.44
WESTWOOD APARTMENTS LLC	RENT ASSIST - GA	310.00
WEX BANK	ROADS/FUEL	27,341.11
WINDSTREAM HOLDINGS INC	MO BILL - COMMUNICATIONS	396.39
YANT TESTING SUPPLY & EQUIPMENT INC	ROADS/REPAIR - KEG CRK	513.93
ZACHARIE NORMAN	REIMB EXP - SHERIFF	140.64
		<hr/>
		5,927,219.33

Fund Summary		
Fund		Payment Amount
0001 - GENERAL BASIC FUND		1,077,291.41
0002 - GENERAL SUPPLEMENTAL FUND		402,226.52
0003 - GAMBLING RESOURCES FUND		159,978.62
0005 - WIC/FEDERAL FUNDING FUND		10,521.35
0007 - LOST CONSERVATION FUND		18,742.30
0011 - RURAL SERVICES BASIC FUND		43,222.25
0017 - CO ATTORNEY DEL FINE COLLECT FUN		92.00
0019 - PROPERTY ACQUISITION/IMPROVEMENT/MA		1,562.50
0020 - SECONDARY ROADS FUND		1,071,673.55
0024 - CO RECORDER'S RECORDS MGMT FUND		100.00
0027 - CO CONSERV LAND ACQ		409.48
0036 - LOST SOIL CONS WEST FUND		1,820.50
0042 - AMERICAN RESCUE PLAN ACT (ARPA)		43,239.39
0046 - WEST SWCD/POTT CO STRUCTURES FUN		253.36
0051 - VETERAN SERVICE OFFICE DONATIONS FUN		1,000.00
1630 - BOND SERIES 2021A CAPITAL FUND		84,545.17
1640 - BOND SERIES 2021B CAPITAL FUND		326,945.17
1650 - BOND SERIES 2022 CAPITAL FUND		67,346.62
1700 - BIKE TRAIL FUND		49,255.80
1925 - 2020B ROADS CAPITAL PROJECT FUND		64.45
1935 - 2021C ROADS CAPITAL PROJECT FUND		978,434.54
4000 - EMER MANAGEMENT SERVICE FUND		47,223.42
4010 - E911 FUND		221,301.79
4155 - MHDS REGION FUND		800,037.38
5400 - JUVENILE DETENTION		59.25
6000 - DRAINAGE		498,288.64
8000 - CRESCENT RIDGE SKI HILL		21,583.87
		<hr/>
		5,927,219.33

# **Scheduled Sessions**

**Kristi Everett/Election Deputy, Auditor's Office**

**Canvass of 2023 Special Election, and to  
authorize Auditor to pay election costs.**

**Tina Treantos/Operations**  
**Adminstrator, Secondary**  
**Roads**

**Discussion and/or decision to approve Resolution 56-2023 for approval of Traffic Safety Improvement Program application for Volunteer Fire Department activated warning beacons.**



**RESOLUTION NO. 56-2023**

**APPROVAL OF TRAFFIC SAFETY IMPROVEMENT PROGRAM APPLICATION FOR  
VOLUNTEER FIRE DEPARTMENT ACTIVATED WARNING BEACONS**

**WHEREAS**, the Iowa Department of Transportation has adopted Administrative Rule 761 – Chapter 164, which created the Traffic Safety Improvement Program (TSIP) to allow funding to be provided to local jurisdictions for eligible traffic safety improvement projects; and,

**WHEREAS**, Pottawattamie County has determined that providing activated warning beacons for the Volunteer Fire Departments will aid in improving the safety of the traveling public as well as the volunteers responding to an emergency; and,

**WHEREAS**, activated beacons are recognized traffic control devices in the Manual of Uniform Traffic Control Devices (MUTCD), 2009 edition; and,

**WHEREAS**, a traffic study conducted by FHU dated March 29, 2022 recommends activated beacons to be installed on Hwy 92 and Cypress Avenue to warn traffic to provide for a safer and faster emergency response of the Lewis Township Fire and Rescue; and,

**WHEREAS**, the Volunteer Fire Departments in Crescent, Minden, Neola, Oakland, Treynor, Underwood and Walnut also have a desire for the activated warning beacons; and,

**WHEREAS**, the Pottawattamie County Engineer recommends TSIP applications be submitted to the Iowa Department of Transportation for safety funding of the above mentioned traffic control devices.

**NOW THEREFORE BE IT RESOLVED**, that the Pottawattamie County Board of Supervisors,

1. Supports the applications to the Iowa Department of Transportation Traffic Safety Improvement Program.
2. Certifies that Pottawattamie County will provide continuous maintenance to these activated warning signs.
3. Authorizes the Board of Supervisors Chairperson to sign the applications and supporting documents in relation to the TSIP funding.

**Dated this 8th Day of August, 2023.**

ROLL CALL VOTE

	AYE	NAY	ABSTAIN	ABSENT
_____ Brian Shea, Chairman	<input type="radio"/>	<input type="radio"/>	<input type="radio"/>	<input type="radio"/>
_____ Scott Belt	<input type="radio"/>	<input type="radio"/>	<input type="radio"/>	<input type="radio"/>
_____ Tim Wichman	<input type="radio"/>	<input type="radio"/>	<input type="radio"/>	<input type="radio"/>
_____ Susan Miller	<input type="radio"/>	<input type="radio"/>	<input type="radio"/>	<input type="radio"/>
_____ Jeff Jorgensen	<input type="radio"/>	<input type="radio"/>	<input type="radio"/>	<input type="radio"/>

ATTEST: \_\_\_\_\_  
Melvyn Houser, County Auditor

**Tina Treantos/Operations**  
**Adminstrator, Secondary**  
**Roads**

**Discussion and/or decision to approve  
Telecommunications Easement for Western Iowa  
Networks at the Roads Operations Center.**

**TELECOMMUNICATIONS EASEMENT**

**Grantor:**           Name:           Pottawattamie County, Iowa  
                          Address:       227 S. 6<sup>th</sup> Street  
  Council Bluffs, IA 51501

**Grantee:**           Name:           BTC, Inc.  
                          Address:       112 E. Main St.  
  Breda, IA 51436

**Return To:**                           Western Iowa Networks  
  112 E. Main St.  
  Breda, IA 51436

This Telecommunications Easement (this "**Easement**") is dated effective as of \_\_\_\_\_, 20\_\_\_\_ and is between the **Grantor** identified above and the **Grantee** identified above, together with Grantee's lessees, licensees, successors and assigns.

WHEREAS, Grantor is the owner of certain real estate legally described on **Exhibit A** attached hereto (the "**Easement Premises**");

WHEREAS, Grantee is a provider of local telecommunications and high-speed broadband service in the state of Iowa; and

WHEREAS Grantor wishes to grant, and Grantee wishes to accept and hold, an easement under, across, upon and through the Easement Premises.

NOW THEREFORE, for one dollar (\$1.00) and other good and valuable consideration, the receipt and sufficiency of which are hereby acknowledged, the parties agree as follows:

1.       Grant of Easement. The undersigned Grantor (whether one or more), hereby grant and convey to Grantee, a **permanent and perpetual** easement over the Easement Premises (the "**Easement**"), for the purpose of surveying, constructing, locating, inspecting, installing, repairing, enlarging, altering, maintaining, replacing and removing a telecommunications equipment hut (the "**Equipment Shelter**") together with fiber optic or other telecommunications cable and other voice, video and data communications facilities and equipment, together with necessary electronics and other accessories (collectively, the "**Facilities**", the Equipment Shelter and the Facilities collectively, the "**Improvements**"), under, across, upon and through the Easement Premises.

2.       Right of Access. Grantee shall have all rights of ingress and egress to the Easement Premises reasonably necessary for the use and enjoyment of the Easement as contemplated herein, including but not limited to



the right to remove any obstructions or structures subsequently placed or erected on the Easement Premises (but not existing buildings or structures) and interfering with Grantee's use and enjoyment of the Easement. Grantee shall have the right to place on the surface of the Easement the Improvements together with manholes, pedestals, connector terminals, repeaters, testing terminals, and other route markers for the safe and efficient use and enjoyment of the Easement. Grantee may temporarily use additional workspace adjacent to the Easement, at certain locations where needed during construction, maintenance and removal of its Facilities.

3. Improvements by Grantee.

A. Alterations, Improvements, and Changes Permitted. Grantee shall have the right, at its expense, to make such alterations, improvements, and changes to the Easement Premises from time to time, including, without limitation, the right to construct, alter, maintain, and repair the Improvements. Grantor shall reasonably cooperate with Grantee, at no out-of-pocket expense to Grantor, in complying with or obtaining any land use permits and approvals, building permits or any other approvals (collectively the "**Approvals**") required for the financing, construction, installation, monitoring, maintenance, or operation of any such Improvements, including execution, if necessary, of applications for such Approvals, and including participating in any appeals or regulatory proceedings respecting the Improvements. Any Improvements constructed on the Easement Premises by Grantee shall be constructed in a good and workmanlike manner and in accordance with all applicable governmental statutes, ordinances, laws, and regulations.

B. Repairs and Maintenance. Grantee shall, throughout the term of this Easement, be responsible for arranging for the maintenance and upkeep of the Easement Premises, including any Improvements of every kind that may be located on the Easement Premises, such that the Easement Premises remains in reasonably good condition and repair. Notwithstanding the above, Grantor shall be responsible for the general care and maintenance (including snow removal and mowing) for any areas providing common access to the Easement Premises and Grantor's property.

C. Temporary Storage. Temporary outdoor storage of equipment and materials shall be permitted within the Easement Premises from time to time, provided (1) such equipment and materials are limited to those used in connection with construction or operation of the Improvements and (2) the period of outdoor storage is limited to such time as reasonably necessary for such construction and operation.

4. Real Estate Taxes.

A. Tax Assessments for Improvements by Grantee. Grantee shall request the Pottawattamie County Assessor to list and assess the Improvements by Grantee as buildings or improvements erected by any person or entity other than the owner of the land, in accordance with Iowa Code §428.4(3). Grantee shall further request to have a separate tax statement issued directly to Grantee for said Improvements by Grantee.

B. Taxes on the Improvements by Grantee. Grantee shall pay all the Real Estate Taxes levied on the Improvements by Grantee directly to the taxing authority before the taxes become delinquent. Failure to timely pay the Real Estate Taxes shall be deemed a material breach of this agreement, entitling Grantor to any and all available legal remedies, including but not limited to termination of the Easement.

C. Contesting Taxes. Grantee shall retain the right to contest the validity or amount of the assessed valuation of the Improvements by Grantee on the Easement Premises and corresponding tax assessments. .

5. No Interference. Grantor will not and will not permit others to make any use of the Easement Premises that would in any way interfere with Grantee's rights under this Easement, which shall include Grantee's rights of exclusive access to and use of Improvements constructed on the Easement Premises. Grantor reserves the right to use the real property within the Easement, provided that such use will not interfere with or obstruct Grantee's operations or activities, or create any actual or potential hazard to the Improvements actually constructed on or installed in the Easement. Notwithstanding the preceding, Grantor is not responsible for any accidental damage to the Improvements not resulting from Grantor's or its employees' or agents' negligent or more culpable actions or omissions.

6. Easement Runs with the Land. The Easement shall be deemed to run with the land, and all of the covenants, promises, agreements, representations and warranties of the Easement by or on behalf of Grantor or Grantee shall bind and inure to the benefit of Grantor, Grantee and their respective successors and assigns.

7. Consideration. The consideration herein stated shall be the full consideration due Grantor from Grantee for all of Grantee's initial construction and future operations and activities within the Easement, provided that Grantee shall pay to Grantor or Grantor's tenants, as their respective interests may appear, for any actual damages to growing crops, trees, shrubbery, livestock, fences or existing buildings or structures, caused by the operations or activities of Grantee, whether in connection with the initial construction of the Improvements or future operations or activities of Grantee.

8. Warranties of Title. Grantor hereby represents and warrants to Grantee that Grantor holds the Easement Premises by title in fee simple and that Grantor has good and lawful authority to convey the Easement as contemplated herein. Grantor will defend and warrant title to the Easement Premises consistent with the preceding.

9. Further Assurances. Each of the parties hereto agrees to take or cause to be taken further actions, to sign and deliver or cause to be signed and delivered such further instruments and documents and to use its best efforts to obtain such requisite consent as any other party may from time to time reasonably request in order to fully effectuate the purposes, terms and conditions of the Easement.

IN WITNESS WHEREOF, this Easement is being granted effective for all purposes as of the date set forth in the introductory paragraph above:

**Grantor:**

\_\_\_\_\_

Print Name: \_\_\_\_\_  
On Behalf of the Pottawattamie County Board of Supervisors

STATE OF IOWA, COUNTY OF POTTAWATTAMIE, ss:

This record was acknowledged before me on the \_\_\_\_ day of \_\_\_\_\_, 20\_\_ by

\_\_\_\_\_.

(SEAL)

\_\_\_\_\_  
Notary Public in and for said State  
My commission expires: \_\_\_\_\_

**Grantee:**

\_\_\_\_\_

Print Name: \_\_\_\_\_

**Exhibit A**

Legal Description of Easement Premises



## EXHIBIT A

### Western Iowa Networks UG Utility Easement

Legal Description:

An underground utility easement on a portion of Parcel 21218 in part of the SW1/4 NW1/4 of Section 26, Township 75 North, Range 43 West of the 5<sup>th</sup> Principal Meridian, Pottawattamie County, Iowa described as follows:

Commencing at the Southwest corner of said Parcel 21218; thence northwesterly along the west line of said Parcel 21218 a distance of 99.01 feet; thence northeasterly along said west line of Parcel 21218 a distance of 114.60 feet; thence northerly along said west line of Parcel 21218 a distance of 145.72 feet to the Point of Beginning of said easement; thence continuing northerly along said west line a distance of 150.00 feet; thence southeasterly a distance of 454.20 feet to the northwest corner of parking pad of the Office Building; thence southeasterly a distance of 199.29 feet to the southwesterly corner of parking pad of the Maintenance Building; thence south 75.00 feet; thence northwesterly a distance of 628.75 feet to the Point of Beginning for said easement.

Said easement area contains 96,526 square feet (2.216 acres), more or less.

### Western Iowa Networks Building Location Easement

Legal Description:

A utility easement on a portion of Parcel 21218 in part of the SW1/4 NW1/4 of Section 26, Township 75 North, Range 43 West of the 5<sup>th</sup> Principal Meridian, Pottawattamie County, Iowa described as follows:

Commencing at the Southwest corner of said Parcel 21218; thence northwesterly along the west line of said Parcel 21218 a distance of 99.01 feet; thence northeasterly along said west line of Parcel 21218 a distance of 114.60 feet; thence northerly along said west line of Parcel 21218 a distance of 295.72 feet; thence southeasterly a distance of 454.20 feet to the northwest corner of parking pad of the Office Building; thence southeasterly a distance of 199.29 feet to the southwesterly corner of parking pad of the Maintenance Building and the Point of Beginning for said easement; thence east along the south line of said parking pad a distance of 100.00 feet; thence south 75.00 feet; thence west a distance of 100.00 feet; thence north a distance of 75.00 feet to the Point of Beginning for said easement.

Said easement area contains 7,500 square feet (0.172 acre), more or less.



EASTERN HILLS DRIVE

99.01'  
114.60'  
145.72'  
150.00'

SW PROPERTY CORNER

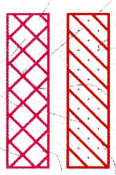
POINT OF BEGINNING UG ELECTRIC

POINT OF BEGINNING BLDG ESMT

OFFICE BLDG FFE = 1163.5

MAINTENANCE BLDG FFE = 1164

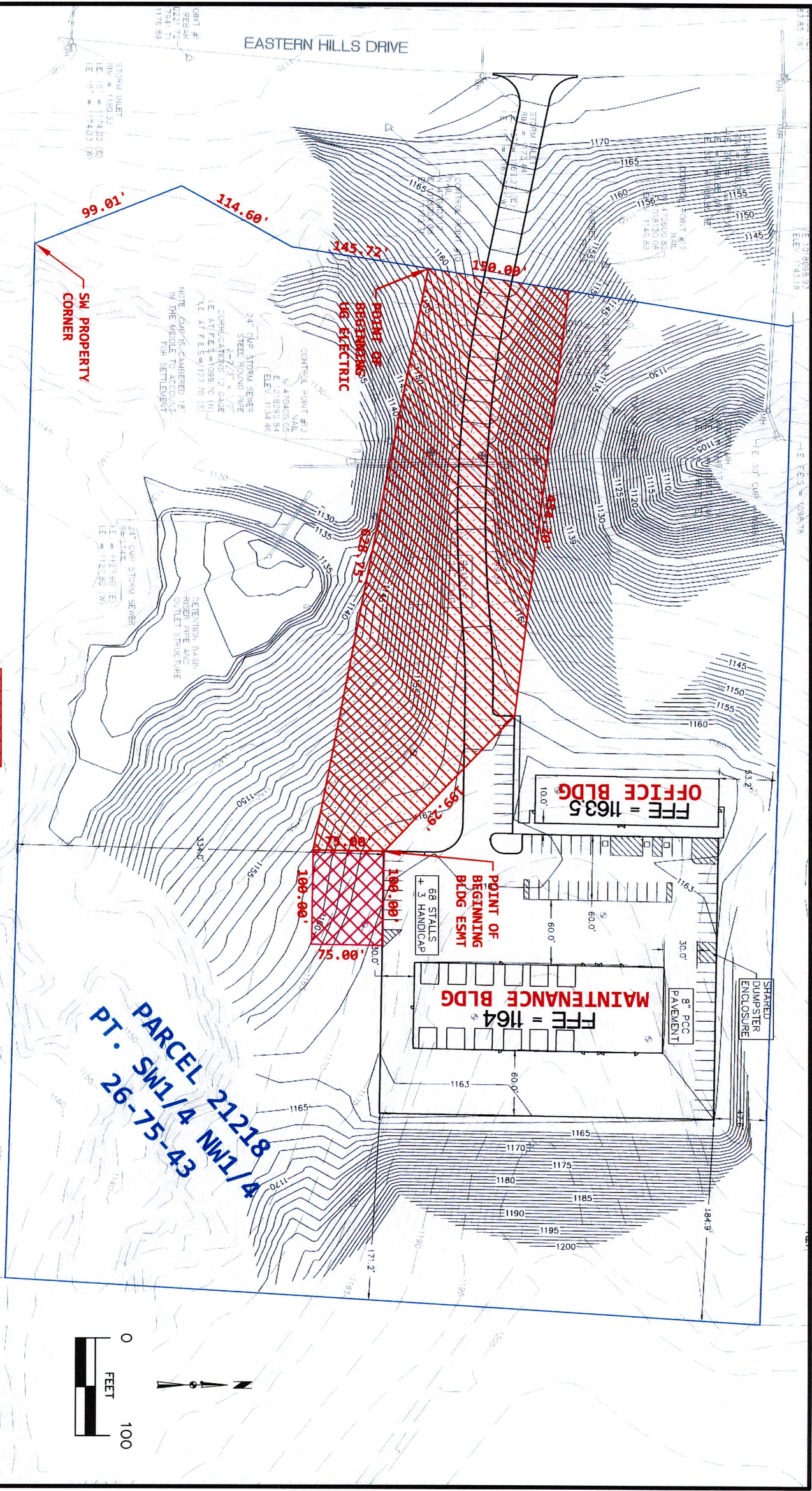
PARCEL 21218  
PT. SW1/4 NW1/4  
26-75-43



- UG WESTERN IOWA NETWORKS  
- WESTERN IOWA NETWORKS CABLE VAULT LOCATION



EXHIBIT A  
June 6, 2023





**Tina Treantos/Operations**  
**Adminstrator, Secondary**  
**Roads**

**Discussion and/or decision to approve joint Resolution 39-2023 with the City of Walnut to establish stop condition and signage at the intersection of North Street(G16) and Antique City Drive(M47).**

**RESOLUTION 39-2023**

**RESOLUTION TO ESTABLISH STOP CONDITION AND SIGNAGE**

**WHEREAS;** The Board of Supervisors are empowered under authority of Sections 321.236, 321.255 and 321.345 of the Code of Iowa to designate any secondary road intersection under their jurisdiction as a STOP intersection and to erect STOP signs at one or more entrances to such intersections, and

**WHEREAS;** Pottawattamie County, Iowa and the City of Walnut, Iowa have concurrent jurisdiction over the intersection of North Street (G16) and Antique City Drive (M47) at the NW Corner, SE¼, Section 9, T77N, R38W (Layton Twp) within the corporate Limits of Walnut, Iowa, and

**WHEREAS;** The intersection does not have legally established STOP approaches for northbound and southbound traffic to the intersection, and

**WHEREAS;** The City of Walnut, Iowa has requested that STOP signs be placed at the north and south entrances of the intersection of North Avenue (G16) and Antique City Drive for the safety of the traveling public and pedestrians

**NOW THEREFORE BE IT RESOLVED** by the Pottawattamie County Board of Supervisors and the City Council of Walnut, Iowa that designated STOP APPROACHES and "STOP" signs with advance warning signs be furnished and maintained by the City of Walnut, Iowa and be erected by Pottawattamie County, Iowa as identified herein.

Approved this 13 Day of <sup>July</sup>~~June~~, 2023



Wm. Brett Simpson, Mayor

ATTEST:



Shannon Wood, City Clerk

Dated this \_\_\_\_ Day of ~~June~~, 2023.

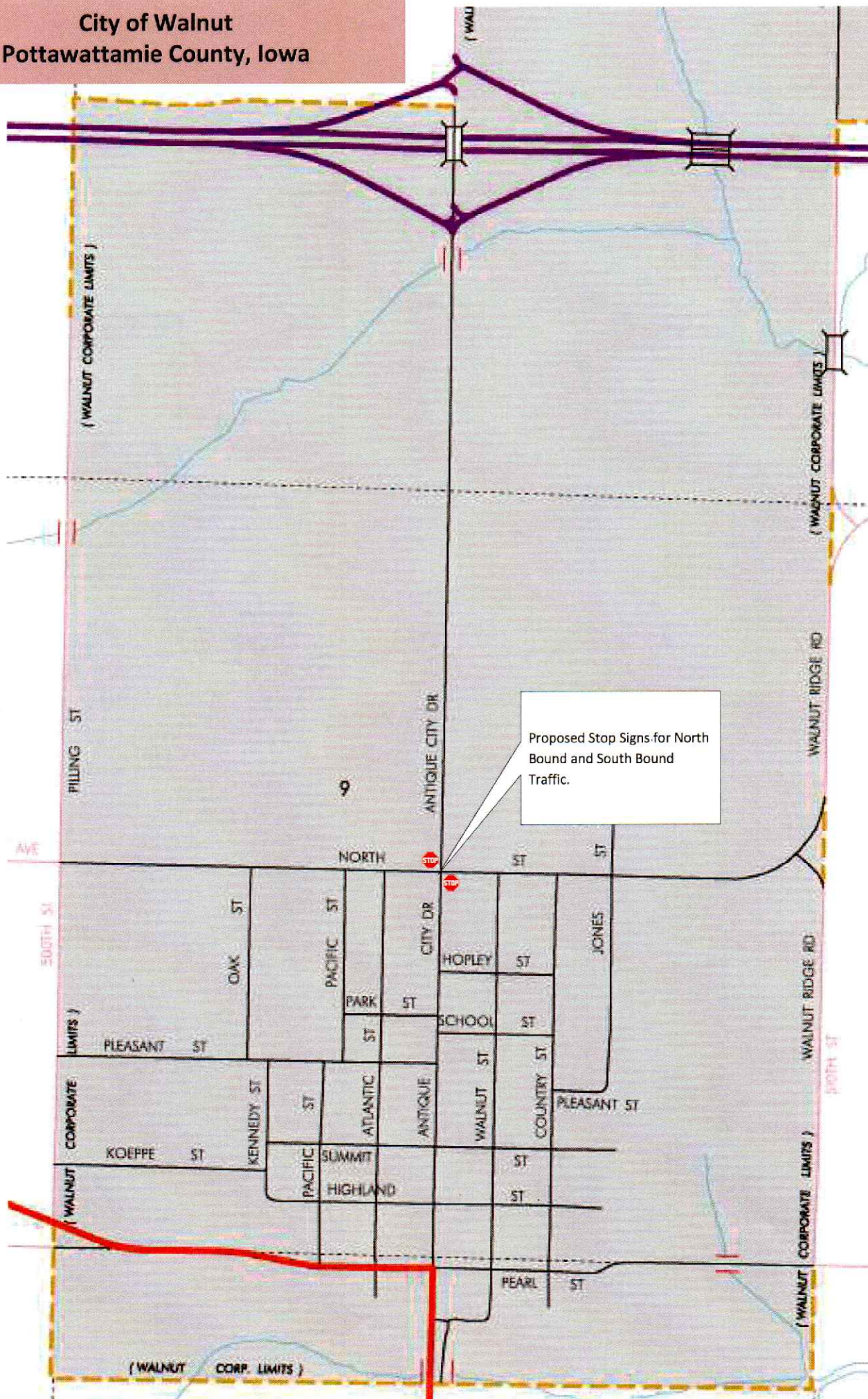
**ROLL CALL VOTE**

	AYE	NAY	ABSTAIN	ABSENT
_____ Brian Shea, Chairman	<input type="radio"/>	<input type="radio"/>	<input type="radio"/>	<input type="radio"/>
_____ Scott Belt	<input type="radio"/>	<input type="radio"/>	<input type="radio"/>	<input type="radio"/>
_____ Tim Wichman	<input type="radio"/>	<input type="radio"/>	<input type="radio"/>	<input type="radio"/>
_____ Susan Miller	<input type="radio"/>	<input type="radio"/>	<input type="radio"/>	<input type="radio"/>
_____ Jeff Jorgensen	<input type="radio"/>	<input type="radio"/>	<input type="radio"/>	<input type="radio"/>

ATTEST: \_\_\_\_\_  
Melvyn Houser, County Auditor



City of Walnut  
Pottawattamie County, Iowa



Proposed Stop Signs for North Bound and South Bound Traffic.

**Other Business**

# Committee Appointments

Update from Board members on Committee meetings from the past week.


**Received/Filed**

## Fee Book (07/01/2023 - 07/31/2023)

Criteria: {FMXFUS01\_RPT\_POTT.TndrDate} >= #07/01/2023# AND {FMXFUS01\_RPT\_POTT.TndrDate} <= #07/31/2023#

	Count	Total Fund Amount
<b>Recording Fees</b>		
RMA	1015	\$1,016.00
E-Commerce	1015	\$1,016.00
Audit	291	\$1,590.00
Recording	1015	\$23,690.00
County Transfer Tax	154	\$13,759.48
State Transfer Tax	154	\$66,006.92
Photo Copies	26	\$348.80
<b>Total For Recording Fees</b>	<b>3670</b>	<b>\$107,427.20</b>
<b>Other Fees</b>		
COUNTY PASSPORT POSTAGE FUND	42	\$10,107.50
<b>Total For Other Fees</b>	<b>42</b>	<b>\$10,107.50</b>
<b>Boats</b>		
Boat Writing	19	\$306.00
Boat State	19	\$1,779.85
Boat Title County	15	\$220.00
Boat Title State	15	\$286.00
Boat Liens State	7	\$58.50
Use Tax	18	\$29,175.14
Boat Lien County	7	\$45.00
Road Pass	9	\$650.00
DNR Postage	12	\$54.00
<b>Total For Boats</b>	<b>121</b>	<b>\$32,574.49</b>
<b>Hunt and Fish</b>		
Hunt Fish County	3	\$3.00
Hunt Fish State	3	\$95.50
<b>Total For Hunt and Fish</b>	<b>6</b>	<b>\$98.50</b>
<b>ELSI</b>		
ELSI Couny	39	\$639.00
ELSI State	20	\$1,850.50
<b>Total For ELSI</b>	<b>59</b>	<b>\$2,489.50</b>
<b>Vitals</b>		
Cert Copy County	53	\$2,084.00
Cert Copy State	53	\$5,731.00
Marriage County	48	\$192.00
Marriage State	48	\$1,488.00
<b>Total For Vitals</b>	<b>202</b>	<b>\$9,495.00</b>
<b>Collected Total:</b>		<b>\$162,192.19</b>
<b>Charged Total:</b>		<b>\$175.00</b>
<b>Grand Total:</b>		<b>\$162,367.19</b>

# Recorder

	mr# 46504	Jul-23		ck# 5310
Amount	Account #	Account Name		
\$2,276.00	0001-1-07-8110-413000-000	Vital Records		
\$1,016.00	0024-1-07-8110-400001-000	RMA		
\$639.00	0001-1-07-8110-409000-000	ELSI		
\$13,759.48	0001-1-07-8110-404000-000	Transfer Tax		
\$24,038.80	0001-1-07-8110-400000-000	Office Fees		
\$1,590.00	0001-1-07-8110-410000-000	Auditor Fees		
\$306.00	0001-1-07-8110-402000-000	Boat Writing Fee		
\$45.00	0001-1-07-8110-402000-000	Boat Liens		
\$10,107.50	0001-1-07-8110-414000-000	Passports		
\$54.00	0001-1-07-8110-415000-000	DNR Boat Postage		
\$650.00	0001-1-07-8110-407000-000	ATV ROADPASS		
\$3.00	0001-1-07-8110-417000-000	Hunting/Fishing License		
\$0.00	001-1-07-8110-501000-000	Plat Books		
\$0.00	001-1-07-8110-501000-000	Plat Books Postage		
<b>\$54,484.78</b>	<b>Total</b>	<b>Checks prepared by: A M. </b>		



**Appendix A**

**POTTAWATTAMIE COUNTY**

**OUT-OF-STATE TRAVEL NOTIFICATION FORM**

This form is used to notify the Board of Supervisors of out-of-state travel and to provide an estimate of travel expenses. It must be submitted to the Board of Supervisor’s office no later than one (1) week prior to the out-of-state travel. **Completed form must accompany any claims sent for payment or reimbursement.**

**TRAVEL INFORMATION**

Name of Employee Traveling: Rachel Bieghler, Liz Sanders, Jill Porter

Department: Pottawattamie County Sheriff's Office - Division of Communications

Destination: Appleton, WI

Date of Travel: FROM: 08/27/23 TO: 09/02/23

Name of Elected Official/Department Head Authorizing Travel: Captain Sam Arkfeld

**PURPOSE OF TRIP**

**1. Conference Travel**

- Giving a presentation
- 
- Serving as panel member, chair
- Serving as an Office or Board Member
- Continuing Education
- Other please explain \_\_\_\_\_

**2 Non-Conference Travel**

State Purpose: \_\_\_\_\_

FBI LEEDA Supervisor Institute Training

\_\_\_\_\_

\_\_\_\_\_

Conference Name (Please give complete name) \_\_\_\_\_

<b><u>Expense</u></b>			<b><u>Cost Estimate</u></b>
Transportation	Mileage <input checked="" type="checkbox"/>	Airfare <input type="checkbox"/>	\$262.50 (fuel costs)
Lodging			\$1871.10 (3 rooms, \$90/night + tax)
Meals: Breakfast	Included <input type="checkbox"/>	Not Included <input checked="" type="checkbox"/>	\$273 (\$13/person, 7 days)
Lunch	Included <input type="checkbox"/>	Not Included <input checked="" type="checkbox"/>	\$315 (\$15/person, 7 days)
Dinner	Included <input type="checkbox"/>	Not Included <input checked="" type="checkbox"/>	\$546 (\$26/person, 7 days)
Conf./Seminar Fee			\$2,385.00 (\$795/person)
Other:	Hotel parking costs		\$60 (\$10/night)
<b>Total Estimated Cost</b>			<b>\$5712.60</b>

Meals may be included in conference fees or provided by the hotel. Indicate whether meal is included or not. If meal is not included, please refer to the U.S. General Services Administration website for allowable meal per diem [www.gsa.gov](http://www.gsa.gov) Select travel, select a state, select calculate per diem allowances for a trip, select your travel dates, select destination county, select breakdown, the total M&IE rate is listed (middle row), scroll up to the top of the page and select M&IE for breakdown by meal (breakfast, lunch, dinner), find the corresponding number on the far left for your total and the breakdown is provided.

# Public Comments