

Consent Agenda

April 4, 2023

MET IN REGULAR SESSION

The Board of Supervisors met in regular session at 10:00 A.M. All members present. Chairman Shea presiding.

PLEDGE OF ALLEGIANCE

1. CONSENT AGENDA

After discussion was held by the Board, a Motion was made by Belt, and second by Miller, to approve:

- A. March 28, 2023, Minutes as read.
- B. Jail - Employment of David Moritz as a Detention Officer.

UNANIMOUS VOTE. Motion Carried.

2. SCHEDULED SESSIONS

Motion made by Wichman, second by Belt, to approve and sign Proclamation designating the month of April 2023 as Child Abuse Prevention Month.

**POTTAWATTAMIE COUNTY BOARD OF SUPERVISORS
PROCLAMATION
CHILD ABUSE PREVENTION MONTH – APRIL 2023**

WHEREAS, our children are our most valuable resource and provide hope for the future; and

WHEREAS, child abuse and neglect can have long-term effects that have lasting consequences for victims and affect every segment of our community; and

WHEREAS, together we can support safe, healthy families in our community by partnering to protect children; finding solutions with input and action from everyone; and

WHEREAS, communities must make every effort to support every child to have a great childhood and ensure families have the support needed to raise their children in safe, nurturing environments;

WHEREAS, we can promote the well-being of children and families, build resilience, and help to heal trauma.

NOW, THEREFORE, we, Pottawattamie County Board of Supervisors, do hereby proclaim April 2023 as Child Abuse Prevention Month and urge all citizens to recognize this month by dedicating ourselves to the task of improving the quality of life for all children and families.

ROLL CALL VOTE

	AYE	NAY	ABSTAIN	ABSENT
_____ Brian Shea, Chairman	<input type="radio"/>	<input type="radio"/>	<input type="radio"/>	<input type="radio"/>
_____ Scott Belt	<input type="radio"/>	<input type="radio"/>	<input type="radio"/>	<input type="radio"/>
_____ Tim Wichman	<input type="radio"/>	<input type="radio"/>	<input type="radio"/>	<input type="radio"/>
_____ Susan Miller	<input type="radio"/>	<input type="radio"/>	<input type="radio"/>	<input type="radio"/>
_____ Jeff Jorgensen	<input type="radio"/>	<input type="radio"/>	<input type="radio"/>	<input type="radio"/>

Attest: _____
 Melvyn Houser, County Auditor
 Pottawattamie County, Iowa

Roll Call Vote: AYES: Shea, Belt, Wichman, Miller, Jorgensen. Motion Carried.

Westfair Board Members appeared before the Board to discuss the capital projects that they are currently working on.
Discussion only. No action taken.

Tom Kallman/Manager, Regional Water appeared before the Board to discuss additional funds for water extension to Pioneer Trail.
Discussion only. No action taken.

Motion by Belt, second by Miller, to sign contract to purchase additional Right of Way from Joseph and Paula Lariviere in the amount of \$478.24 for project L02023(RC78) – 73-78.
UNANIMOUS VOTE. Motion Carried.

Motion by Miller, second by Belt, to sign contract to purchase additional Right of Way from David and Darlene Pilling in the amount of \$623.05 for project L02023(RC78) – 73-78.
UNANIMOUS VOTE. Motion Carried.

Motion by Wichman, second by Belt, to approve and authorize Board to sign **Resolution No. 20-2023**, entitled: RESOLUTION TO PROCEED BY EMINENT DOMAIN PURSUANT TO IOWA CODE §6B.2C TO CONDEMN REAL ESTATE IN POTTAWATTAMIE COUNTY, IOWA FOR THE PURPOSES OF CONSTRUCTING ROAD IMPROVEMENTS ON DUMFRIES AVENUE FROM ASPEN ROAD TO PIONEER TRAIL.

RESOLUTION NO. 20-2023

RESOLUTION TO PROCEED BY EMINENT DOMAIN PURSUANT TO IOWA CODE §6B.2C TO CONDEMN REAL ESTATE IN POTTAWATTAMIE COUNTY, IOWA FOR THE PURPOSES OF CONSTRUCTING ROAD IMPROVEMENTS ON DUMFRIES AVENUE FROM ASPEN ROAD TO PIONEER TRAIL

WHEREAS the County has implemented plans to upgrade and pave Dumfries Avenue from Aspen Road to Pioneer Trail in Pottawattamie County, Iowa; and

WHEREAS there is a reasonable expectation that the County will be able to achieve its public purpose and comply with all applicable standards for the same; and

WHEREAS the laws of the State of Iowa require the passage of a resolution by the County prior to its implementation of eminent domain by condemnation proceeding pursuant to the Iowa Code; and

WHEREAS a Temporary Easement for purposes of roadway improvement and construction, and a Permanent Easement for roadway purposes, is required to achieve the goals of the public improvement project; and

WHEREAS the County has unsuccessfully attempted to negotiate the voluntary sale of property necessary for the completion of the project prior to initiating eminent domain proceedings.

NOW THEREFORE, BE IT RESOLVED by the Board of Supervisors of Pottawattamie County, Iowa that the County approves proceeding by eminent domain pursuant to the laws of the State of Iowa to condemn the property owned by Henry C. Brandt, Jr., Linda Brandt, Jane Triptow, Barbara Frederick, and Vic Frederick legally described as:

A portion of Section 24, Township 74 North, Range 43 West in Pottawattamie County, Iowa, more specifically described in the Permanent Easement Plat and Temporary Easement exhibits attached to this Resolution.

PASSED AND APPROVED this 4th day of April, 2023.

	ROLL CALL VOTE			
	AYE	NAY	ABSTAIN	ABSENT
_____ Brian Shea, Chairman	<input type="radio"/>	<input type="radio"/>	<input type="radio"/>	<input type="radio"/>
_____ Scott Belt	<input type="radio"/>	<input type="radio"/>	<input type="radio"/>	<input type="radio"/>
_____ Tim Wichman	<input type="radio"/>	<input type="radio"/>	<input type="radio"/>	<input type="radio"/>
_____ Susan Miller	<input type="radio"/>	<input type="radio"/>	<input type="radio"/>	<input type="radio"/>
_____ Jeff Jorgensen	<input type="radio"/>	<input type="radio"/>	<input type="radio"/>	<input type="radio"/>

ATTEST: _____
Melvyn Houser, County Auditor

Recommended: _____
Pottawattamie County Engineer

Roll Call Vote: **AYES: Shea, Belt, Wichman, Miller, Jorgensen. Motion Carried.**

3. OTHER BUSINESS

Motion by Wichman, second by Miller, to approve updated IT Computer Replacement Policy.
UNANIMOUS VOTE. Motion Carried.

Motion by Belt, second by Jorgensen, to approve pay for Victim Witness Coordinator.
UNANIMOUS VOTE. Motion Carried.

4. COMMITTEE APPOINTMENTS

Board discussed Committee meetings from the past week.
Board will hold a Town Hall meeting in Oakland on Tuesday, April 11 from 6:30 – 8:00 P.M at the
Oakland Community Building.
Discussion only. No action taken.

5. RECEIVED/FILED

- A. Salary Action(s):
- 1) Sheriff – Payroll status change for Anthony Leick, Tanner Frain, and Marc Freeman.
 - 2) Jail – Payroll status change for Cory Allen, and Camsley Hovey.
 - 3) Conservation – Employment of Charles Foote as a Seasonal Park Aide at Arrowhead.

6. PUBLIC COMMENTS

Sue Jungman appeared before the Board to discuss her concerns on the World Health Organization, who will be in charge of Global Health. Worried that other Countries will dictate our Health processes.

7. CLOSED SESSION

Motion by Wichman, second by Jorgensen, to go into Closed Session pursuant to Iowa Code 20.17.(3) for discussion and/or decision on labor negotiations/collective bargaining matters.

Roll Call Vote: **AYES: Shea, Belt, Wichman, Miller, Jorgensen. Motion Carried.**

Motion by Wichman, second by Belt, to go out of Closed Session.

Roll Call Vote: **AYES: Shea, Belt, Wichman, Miller, Jorgensen. Motion Carried.**

8. BUDGET STUDY SESSION

- A. Jana Lemrick/ Director, Human Resources and Matt Wyant/Director, Planning and Development – Budget study session.
Discussion only. No action taken.

9. ADJOURN

Motion by Wichman, second by Jorgensen, to adjourn meeting.

UNANIMOUS VOTE. Motion Carried.

THE BOARD ADJOURNED SUBJECT TO CALL AT 12:46 P. M

Brian Shea, Chairman

ATTEST: _____
Melvyn Houser, County Auditor

APPROVED: April 11, 2023
PUBLISH: X

I, Melvyn Houser, Auditor of Pottawattamie County, verify the following to be a correct copy of all claims allowed by the Pottawattamie County Board of Supervisors for the month of March 2023.

Vendor Name	Payable Description	Total Payments
20 W MAIN LLC	PROF SVC - SHERIFF	215.00
3312 WEST BROADWAY PROPERTIES LLC	RENT - PUB HEALTH	1,591.81
43 NORTH IOWA	RCF - SWIA MHDS REGION	323.01
92 WEST	PROF SVC - CONSERVATION	420.00
AA WHEEL & TRUCK SUPPLY INC	ROADS/PARTS	83.98
ABBE CENTER FOR COMMUNITY MENTAL HEALTH	RCF - SWIA MHDS REGION	6,298.25
ABBIE ASHCRAFT	REIMB EXP - SWIA MHDS REGION	57.31
ABLE LOCKSMITHS	PROF SVC - CONSERVATION	51.25
ACME RESTORATIONS INC	PROF SVC - SHERIFF	2,292.55
ADAM FIELDS	REIMB EXP - SHERIFF	214.87
ADAM KLEIN	REIMB EXP - IT	18.86
ADVANCE SOUTHWEST IOWA CORPORATION	PROF SVC - PLANNING	9,917.50
AGRIVISION GROUP LLC	ROADS/PARTS	395.18
AIRGAS INC	ROADS/SUPPLIES	827.98
AJR PROPERTIES INC	RENT ASSIST - GA	1,425.00
ALEGENT CREIGHTON CLINIC	ROADS/DRUG SCREENING	538.00
ALEGENT CREIGHTON CLINIC	MED SVC - SHERIFF	472.00
ALEGENT HEALTH BERGAN MERCY HEALTH SYSTEM	MED SVC - JAIL	679.03
ALEGENT HEALTH BERGAN MERCY HEALTH SYSTEM	MED SVC - JAIL	2,602.95
ALL COPY PRODUCTS INC	PROF SVC - WIC	63.82
ALPINE CHIMNEY SWEEP INC	PROF SVC - CONSERVATION	3,040.50
AMAZON CAPITAL SERVICES INC	SUPPLIES - SHERIFF	11,465.31
AMERICAN NATIONAL BANK	MO BILL - JAIL	40,306.93
AMERICAN TEXTILE MILLS INC	ROADS/SUPPLIES	1,911.00
ANDREA C FREENY	TRANSCRIPTS - CO ATTORNEY	86.00
ANDREW BROWN	REIMB EXP - SHERIFF	69.55
ANDREW DEWEY	MEETING - VA	101.25
ANDREW MOATS	REIMB EXP - RECORDER	368.77
ANDREW WILLIAMS	RELOCATION - VA	2,500.00
ANTHONY LEICK	REIMB EXP - SHERIFF	94.08
ARAMARK UNIFORM & CAREER APAREL GROUP INC	SUPPLIES - JAIL	47,782.12
ARNOLD MOTOR SUPPLY	ROADS/PARTS	1,129.31
ASP ENTERPRISES INC	SUPPLIES - CONSERVATION	369.25
ASPEN EQUIPMENT CO	ROADS/SERVICE -453	2,329.84
ASPHALT PAVING ASSOCIATION OF IOWA (APAI)	ROADS/REGISTRATION	90.00
AT&T MOBILITY LLC	MO BILL - EMA	759.66
AUSTIN KAY	MEETING - PLANNING	35.48
AVI SYSTEMS INC	PROF SVC - IT	2,068.30
AVOCA VETERINARY	PROF SVC - CONSERVATION	10.00
AXON ENTERPRISE INC	EQUIP - JAIL	49,718.50
B & K MECHANICAL CONTRACTORS LLC	PROF SVC - NON-DEPARTMENTAL	220,123.51
BARBARA CHENEY	REIMB EXP - SWIA MHDS REGION	191.92
BAUER BUILT INC	ROADS/TIRES	1,616.12
BENNETT REFRIGERATION INC	PROF SVC - JAIL	1,026.99
BETTY COLLINSON	PROF SVC - JAIL	594.00
BILLS WATER CONDITIONING INC	PROF SVC - CONSERVATION	4,201.30
BISHOP BUSINESS EQUIPMENT COMPANY	SUPPLIES - CO ATTORNEY	475.97
BLACK HILLS UTILITY HOLDING	MO BILL - JAIL	28,752.21
BLAKE SIMPSON	RELOCATION - VA	2,500.00
BLUFFS ADVERTISING LLC	PROF SVC - BOARD	1,500.00
BLUFFS ELECTRIC INC	ROADS/REPAIRS	970.00
BLUFFS TAXI AND COURIER INC	TRANSPORT - JAIL	13.75
BOB BARKER COMPANY INC	SUPPLIES - JAIL	2,033.25
BODE DUE INC	ROADS/TIRES - 300	53.50
BOMGAARS SUPPLY INC	SUPPLIES - CONSERVATION	3,829.82
BOO INC	PROF SVC - CONSERVATION	6,053.71
BOUND TREE MEDICAL LLC	SUPPLIES - CONSERVATION	73.63
BP ENTERPRISES INC	PROF SVC - SHERIFF	569.38
BRADLEY POWELL	MEETING - VA	52.00
BRAND INDUSTRIAL SERVICES INC	ENCLOSURE - NON-DEPARTMENTAL	10,632.78
BRANDON ALLEN	REIMB EXP - SHERIFF	288.89
BREDA TELEPHONE CORPORATION	MO BILL - COMMUNICATIONS	734.00
BRENDA DAU	MEETING - BOARD	80.00
BRETT LARSON	MEETING - PLANNING	36.79
BRIAN MILLER	REIMB EXP - SHERIFF	278.26
BRIAN MCMILLIN	PROF SVC - PUB HEALTH	750.00
BRIAN SHEA	REIMB EXP - BOARD	724.22
BRITTANY ROCKWELL	MEETING - VA	54.88
BUSINESS CLEANING SOLUTIONS INC	MO BILL - CONSERVATION	1,117.00
C & J INDUSTRIAL SUPPLY INC	PROF SVC - JAIL	509.75
C & P AUTO PARTS INC	SUPPLIES - JAIL	339.98
CANINE DEVELOPMENT GROUP INC	SUBSCRIPTION - SHERIFF	140.00
CAPITAL SANITARY SUPPLY CO INC	SUPPLIES - JAIL	1,207.08
CARROLL COUNTY COUNCIL FOR THE PREVENTION OF CHILD ABUSE C	SUPPORT SVC - SWIA MHDS REGION	338.34
CASS COUNTY (IA)	MHA - SWIA MHDS REGION	3,904.99
CDW LLC	SUPPLIES - IT	365.72
CEN PRO	PROF SVC - BOARD	639.37
CENTRAL IOWA JUVENILE DETENTION CENTER	TRANSPORT - SWIA MHDS REGION	695.52
CENTURY LINK COMMUNICATIONS LLC	MO BILL - COMMUNICATIONS	7,685.46
CENTURYLINK INC	ROADS/UTILITIES	1,473.92
CHARLES STOKES JR	MEETING - BOARD	40.00
CHASITY KEPHART	REIMB EXP - SWIA MHDS REGION	248.42
CHESTERMAN CO	SUPPLIES - CONSERVATION	1,682.17
CHRISTOPHER JON ELLIOTT	MED SVC - MED EXAMINER	6,666.67
CHS INC	FUEL - EMA	494.04

CINTAS CORPORATION NO 2	ROADS/SUPPLIES	350.86
CIOX HEALTH LLC	RECORDS - CO ATTORNEY	20.84
CITIBANK NA	SUPPLIES - B&G	110.73
CITY OF AVOCA	ROADS/UTILITIES	81.35
CITY OF CARSON	ROADS/UTILITIES	116.06
CITY OF COUNCIL BLUFFS	PROF SVC - IT	899.00
CITY OF COUNCIL BLUFFS	PROF SVC - CONSERVATION	5,250.00
CITY OF HANCOCK	MO BILL - CONSERVATION	841.16
CITY OF LOGAN	RENT - WIC	100.00
CITY OF OAKLAND	MO BILL - ENV HEALTH	15.00
CITY OF ONAWA	RENT - WIC	120.00
CLARK JEPPESEN	PROF SVC - ENV HEALTH	763.20
CLIFFORD KILLPACK	MEETING - BOARD	80.00
COMMERCIAL FARM INDUSTRIAL TIRE SERVICE INC	ROADS/TIRES	2,463.55
CONCERNED INC	VOC/DAY - SWIA MHDS REGION	6,338.34
CONTRACT PHARMACY SERVICES INC	SUPPLIES - JAIL	7,238.93
CONTROL MANAGEMENT INC	PROF SVC - JAIL	4,831.00
CONVERGEONE INC	PROF SVC - IT	6,322.15
CORNHUSKER INTERNATIONAL TRUCKS INC	ROADS/PARTS - 365	4,551.93
CORPORATE TRANSLATION SERVICES INC	PROF SVC - WIC	102.04
COTT SYSTEMS INC	PROF SVC - AUDITOR	150.00
COUNCIL BLUFFS CONVENTION AND VISITORS BUREAU	ADVERTISING - BOARD	17,975.00
COUNCIL BLUFFS WATER WORKS	MO BILL - JAIL	5,002.03
COUNTRY CARE CENTER CORPORATION	RCF - SWIA MHDS REGION	144,511.19
COX COMMUNICATIONS INC	MO BILL - VARIOUS	5,852.49
CRYSTAL CLEAR WATER INC	MO BILL - RECORDER	37.00
CSI SSP INC	PROF SVC - AUDITOR	1,270.85
CUSTOM COMFORT INC	ROADS/REPAIR - UNDERWOOD	1,290.00
CUTLER ONEILL INC	TRANSPORT - MED EXAMINER	1,350.00
D & S FEEDERS LLC	ROADS/CARSON	12,460.00
D DAVID CASSON	MEETING - BOARD	80.00
D M G INC	SUPPLIES - B&G	275.83
D N MARQUARDT TRUST	LANDSCAPING - EAST POTT SWCD	2,948.00
D PUTNAM ENTERPRISES LLC	AWARDS - SHERIFF	128.00
DAMIEN SHULL	ROADS/SERVICE	4,700.00
DANELLE BRUCE	REIMB EXP - SWIA MHDS REGION	451.95
DANNY KINNEY	MEETING - VA	127.50
DAVES PLACE LLC	MED SVC - SWIA MHDS REGION	12,288.00
DAVID DAU	MEETING - BOARD	80.00
DAVID HAZLEWOOD	MEETING - VA	179.25
DAVID W COBERLY SR	PROF SVC - JAIL	243.00
DEBI REDMON	REIMB EXP - SWIA MHDS REGION	108.77
DELL MARKETING LP	MO BILL - IT	2,029.19
DENNIS SUPPLY COMPANY	SUPPLIES - COMMUNICATIONS	54.94
DEVAN FEIGENBUTZ	ROADS/REIMB	18.90
DIAMOND MOWERS LLC	ROADS/PARTS	180.92
DIAMOND OIL COMPANY	FUEL - CONSERVATION	11,867.66
DIANE FORRISTALL	MEETING - BOARD	80.00
DMC FLEET SERVICES	PROF SVC - SHERIFF	3,076.72
DOLORES SILKWORTH	MEETING - PLANNING	34.17
DONALD NIELSON	PUBLICATIONS - BOARD	1,504.80
DONALD NIELSON	PUBLICATIONS - BOARD	1,467.61
DONALD W MATHEWS	PROF SVC - SHERIFF	21,312.55
DOUGLAS LEADERS	PROF SVC - CONSERVATION	350.00
DRAKE WILLIAMS STEEL INC	SUPPLIES - CONSERVATION	1,215.00
DULTMEIER SALES LLC	SUPPLIES - CONSERVATION	624.78
DUSTIN AUSDEMORE	ROADS/REIMB	19.00
EBS c/o AMERICAN NATIONAL BANK	EBS RETIREES - JAIL	5,461.49
ECHO GROUP INC	SUPPLIES - B&G	3,560.40
ECHOSAT INC	ROADS/UTILITIES	224.75
EDWARDS CHEVROLET CADILLAC INC	PROF SVC - SHERIFF	90.78
EDWARDS CHRYSLER DODGE JEEP RAM FIAT	ROADS/PARTS	458.16
ELECTION SYSTEMS & SOFTWARE LLC	SUPPLIES - AUDITOR	210.00
ELECTRONIC CONTRACTING COMPANY	PROF SVC - JAIL	1,600.00
EMILY GROTHE	REIMB EXP - CO ATTORNEY	270.00
ENGINEERING TECHNOLOGIES INC	PROF SVC - B&G	1,237.50
ERIC STROVERS	REIMB EXP - CO ATTORNEY	270.00
EUGENE TURNER	MEETING - BOARD	120.00
EVIZZIT LLC	MH SVC - SWIA MHDS REGION	7,437.89
EYMAN PLUMBING INC	PROF SVC - JAIL	400.00
FARM SERVICE COOPERATIVE	ROADS/FUEL	80,920.14
FARMERS MUTUAL COOPERATIVE TELEPHONE COMPANY	ROADS/UTILITIES	612.40
FASTENAL COMPANY	SUPPLIES - JAIL	1,171.58
FIKES COMMERCIAL HYGIENE LLC	ROADS/UTILITIES - KEG CRK	818.00
FIRESPRING PRINT INC	PROF SVC - CONSERVATION	2,325.55
FIRST INSURANCE GROUP LLC	PROF SVC - BOARD	6,250.00
FIRST NATIONAL BANK OF OMAHA	PROF SVC - SHERIFF	36.90
FIRST WIRELESS INC	EQUIP - BOARD	187,821.30
FLEETPRIDE INC	ROADS/PARTS - 603	769.08
FLEUR DE LIS MOTOR INNS INC	LODGING - JAIL	1,932.00
FLORENCE CRITTENTON HOME OF SIOUX CITY	PROF SVC - DHS	1,399.50
FMTC SWT INC	ROADS/UTILITIES	122.45
FOX CREEK FUNDRAISING LLC	PROF SVC - PUB HEALTH	4,770.00
FRANK DUNN	ROADS/MATERIALS	3,598.00
FRONTIER COMMUNICATIONS OF IOWA LLC	MO BILL - COMMUNICATIONS	555.56
GARREANS LAW LLC	LEGAL SVC - BOARD	1,320.00
GARY FORRISTALL	MEETING - BOARD	40.00
GARY RHOADES	PROF SVC - CONSERVATION	100.00
GAWLEY TIRE & REPAIR INC	ROADS/TIRES - 302	550.00

GENERAL FIRE AND SAFETY EQUIPMENT CO OF OMAHA	PROF SVC - B&G	54.50
GENUINE PARTS COMPANY INC	ROADS/PARTS	1,226.38
GERALD CAHILL	REIMB EXP - JAIL	83.66
GINA HUEBNER	REIMB EXP - SWIA MHDS REGION	92.36
GIS WORKSHOP LLC	ROADS/RENEWAL	1,679.00
GISG LLC	ROADS/SERVICE - KEG CREEK	2,165.84
GLAXOSMITHKLINE HOLDINGS (AMERICAS) INC	SUPPLIES - PUB HEALTH	688.75
GOVCONNECTION INC	PROF SVC - IT	2,071.41
GRACE UNITED METHODIST CHURCH	RENT - WIC	40.00
GRAHAM TIRE CO OF LINCOLN LLC	PROF SVC - SHERIFF	604.00
GREAT AMERICA FINANCIAL SERVICES CORPORATION	PROF SVC - SWIA MHDS REGION	288.90
GREAT PLAINS COMMUNICATIONS HOLDINGS LLC	MO BILL - IT	1,731.04
GREAT PLAINS PEST SERVICES INC	PROF SVC - B&G	271.00
GREAT PLAINS UNIFORMS	PROF SVC - SHERIFF	383.97
GREGORY L DAVIS	MED SVC - JAIL	1,615.67
GREGORY SOLOTH	MEETING - BOARD	80.00
GRISWOLD COOPERATIVE TELEPHONE CO	ROADS/UTILITIES	36.10
GRP & ASSOCIATES INC	PROF SVC - JAIL	160.00
GUARDIANS OF NORTHEAST IOWA INC	PROF SVC - SWIA MHDS REGION	1,800.00
GUYER MACHINE SHOP INC	ROADS/REPAIR - 123	403.16
HAMELE GROUP INC	ROADS/TOOLS	298.25
HARRISON COUNTY (IA)	TRANSPORT - SWIA MHDS REGION	149.78
HARRISON COUNTY HOMEMAKERS	MED SVC - SWIA MHDS REGION	1,410.06
HARRISON COUNTY RURAL ELECTRIC COOPERATIVE	MO BILL - COMMUNICATIONS	508.36
HAWKEYE TRUCK EQUIPMENT CO INC	ROADS/NEW EQUIPMENT - 457	35,073.00
HEARTLAND CO OP	FUEL - SHERIFF	1,637.49
HEARTLAND FAMILY SERVICE	TRAINING - SWIA MHDS REGION	517,139.64
HEARTLAND TIRES AND TREADS INC	ROADS/TIRES - 727	3,046.72
HELGET INC	EQUIP - JAIL	88.00
HENRY COUNTY (IA)	SVC FEES - BOARD	87.32
HENRY SCHEIN INC	SUPPLIES - JAIL	914.91
HGM ASSOCIATES INC	ROADS/SERVICE	23,007.85
HOLLY COLLINS	MEETING - VA	161.64
HOME DEPOT USA INC	SUPPLIES - CONSERVATION	153.41
HORWATH LAUNDRY MACHINERY COMPANY	PROF SVC - JAIL	330.20
HOTSY EQUIPMENT CO	ROADS/SERVICE - HONEY CRK	515.79
HY VEE INC	PRESCRIPTIONS - JAIL	178.42
IMAGING SPECTRUM INC	SUPPLIES - RECORDER	286.99
INDOFF INCORPORATED	SUPPLIES - COMMUNICATIONS	2,479.11
INFOSAFE SHREDDING LLC	PROF SVC - DHS	626.00
INLAND TRUCK PARTS	ROADS/PARTS	128.76
INSIGHT PUBLIC SECTOR	LICENSE - CO ATTORNEY	7,992.42
INTOXIMETERS INC	SUPPLIES - SHERIFF	289.00
IOWA DEPARTMENT OF TRANSPORTATION	ROADS/SUPPLIES	469.89
IOWA PRISON INDUSTRIES	SUPPLIES - SHERIFF	1,196.52
IOWA PUBLIC HEALTH ASSOCIATION FOUNDATION	REGISTRATION - PUB HEALTH	325.00
IOWA STATE ASSOCIATION OF COUNTIES	CONTRIBUTION - BOARD	750.00
IOWA STATE ASSOCIATION OF COUNTY AUDITORS	MEMBERSHIP DUES - AUDITOR	250.00
IOWA STATE SHERIFFS & DEPUTIES ASSOCIATION	REGISTRATION - SHERIFF	350.00
IOWA STATE UNIVERSITY OF SCIENCE AND TECHNOLOGY	ROADS/REGISTRATION	300.00
IOWA WASTE SERVICES HOLDING INC	MO BILL - JAIL	3,264.14
IOWA WASTE SERVICES HOLDINGS INC	PROF SVC - ENV HEALTH	979.18
IOWA WESTERN COMMUNITY COLLEGE	TRAINING - JAIL	23.00
IVAN DELGADO	MED SVC - JAIL	3,645.88
J & R DOOR CO	PROF SVC - JAIL	1,652.50
J B POINDEXTER & CO INC	ROADS/PARTS	174.34
J P COOKE COMPANY	SUPPLIES - B&G	196.30
JACKSON SERVICES INC	PROF SVC - B&G	1,063.16
JAMES (JIM) CARLSON	MEETING - BOARD	80.00
JAMES E TERRY	ROADS/SERVICE	300.00
JAMES HARVEY	REIMB EXP - SHERIFF	27.96
JAMES KOHL	RENT ASSIST - GA	475.00
JAMIE/AMY CASSON	PROF SVC - SHERIFF	1,161.16
JANELLE KUHR	WELL CLOSURE - ENV HEALTH	500.00
JDW MIDWEST LLC	PROF SVC - PLANNING	600.00
JEFFREY JORGENSEN	REIMB EXP - BOARD	276.85
JEFFREY W ANDERSEN	ROADS/TIRES - 405	1,395.97
JEFFS WASH & GLO	PROF SVC - SHERIFF	305.00
JEREDITH BRANDS LLC	MO BILL - B&G	13,028.49
JEREMY A HARKER	REIMB EXP - SHERIFF	331.69
JESSE WINDHAM	REIMB EXP - SHERIFF	314.95
JILL CHAPMAN	MEETING - PLANNING	60.37
JIM HAWK TRUCK TRAILERS INC	ROADS/PARTS	1,753.58
JODIE BECKMAN	REIMB EXP - AUDITOR	52.79
JODY MARSH	ROADS/REIMB	18.17
JOHN J FISCHER	MEETING - BOARD	80.00
JOHN MCINTOSH	RELOCATION - VA	2,500.00
JOHN W GASPARINI INC	SUPPLIES - JAIL	5,113.87
JON JACOBMEIER	REIMB EXP - CO ATTORNEY	270.00
JON KLINDT	MEETING - BOARD	120.00
JON THOMAS	MED SVC - JAIL	6,473.55
JONES AUTOMOTIVE INC	PROF SVC - JAIL	39,308.95
JOSHUA HARKER	REIMB EXP - SHERIFF	282.94
JP BORING CO	PROF SVC - ENV HEALTH	8,266.60
JP LUMBER INC	SUPPLIES - NON-DEPARTMENTAL	454.00
JULIANNE PRUITT	SUPPORT SVC - SWIA MHDS REGION	1,140.00
JUSTIN WOLTMANN	MEETING - BOARD	80.00
KAMBY ENTERPRISES LLC	POSTAGE - CONSERVATION	44.97
KAREN ANDERSON	MEETING - PLANNING	30.90

KAREN POTTER MAXWELL	PROF SVC - SWIA MHDS REGION	100.00
KARL CHEVROLET INC	VEHICLE - SHERIFF	161,495.40
KATELMAN STEEL FABRICATION INC	PROF SVC - B&G	8,440.00
KATHIE KALLAS	REIMB EXP - RECORDER	81.48
KBC INC	EQUIP - CONSERVATION	1,308.24
KEITH BENTLEY	MEETING - BOARD	80.00
KELLY GREER	REIMB EXP - IT	7.27
KELTEK INC	EQUIP - JAIL	144,790.01
KERRIE SNYDER	REIMB EXP - CO ATTORNEY	270.00
KIESLERS POLICE SUPPLY INC	SUPPLIES - SHERIFF	11,792.00
KIMBERLY BOWMAN	RENT ASSIST - GA	600.00
KNIGHT EQUIPMENT COMPANY INC	PROF SVC - CONSERVATION	4,200.00
KONE INC	PROF SVC - JAIL	624.56
KRISTINA M RICHEY	REIMB EXP - SWIA MHDS REGION	861.98
KRONOS SAASHR INC	PROF SVC - IT	1,038.00
L & M PHARMACY CARE LLC	MED SVC - SWIA MHDS REGION	52.37
LAB SOURCE INC	SUPPLIES - JAIL	1,437.50
LANGUAGE LINE SERVICE INC	MO BILL - JAIL	354.61
LARRY PLOEN	MEETING - BOARD	80.00
LARSEN SUPPLY CO	SUPPLIES - B&G	756.75
LAW OFFICES OF BRIAN TACKETT LLC	LEGAL REP - SWIA MHDS REGION	1,384.00
LAWSON PRODUCTS INC	ROADS/SUPPLIES	517.23
LEA A VOSS	REIMB EXP - TREASURER	371.57
LEE BHM CORP	PUBLICATIONS - CONSERVATION	7,963.08
LEE VOLKENS	REIMB EXP - SHERIFF	657.03
LU ANN POTTER	MEETING - BOARD	80.00
LYNN HERRINGTON	REIMB EXP - RECORDER	88.88
LYNN LEADERS	MEETING - PLANNING	99.78
MAIL SERVICES LLC	PROF SVC - TREASURER	3,187.99
MALINA DOBSON	REIMB EXP - CO ATTORNEY	270.00
MARC FREEMAN	REIMB EXP - SHERIFF	149.33
MARILYN HEBING	REIMB EXP - RECORDER	170.20
MARILYN KENNEDY	REIMB EXP - AUDITOR	77.81
MARLOW WHITE UNIFORMS INC	PROF SVC - SHERIFF	710.00
MARNE & ELK HORN TELEPHONE COMPANY	MO BILL - COMMUNICATIONS	548.67
MATHESON TRI GAS INC	SUPPLIES - B&G	234.33
MATTHEW REEVES	REIMB EXP - IT	112.66
MCCLURE ENGINEERING	ROADS/SERVICE	5,515.00
MCKESSON MEDICAL-SURGICAL GOVERNMENT SOLUTIONS LLC	SUPPLIES - PUB HEALTH	2,246.22
MCLAUGHLIN SEPTIC & PORTABLES	PROF SVC - CONSERVATION	1,035.00
MECO-HENNE CONTRACTING INC	PROF SVC - NON-DEPARTMENTAL	133,676.40
MEDTOX LABORATORIES INC	MED SVC - PUB HEALTH	10.00
MEGAN ALBERS	REIMB EXP - BOARD	410.00
MELVYN HOUSER	REIMB EXP - AUDITOR	72.70
MENARDS INC	SUPPLIES - B&G	6,152.48
METAL CULVERTS INC	ROADS/MATERIALS	12,841.20
METCALF FUNERAL HOME	TRANSPORT - MED EXAMINER	300.00
MICHAEL GENEREUX	MEETING - PLANNING	46.62
MICHAEL GUTTAU	MEETING - VA	191.26
MICHAEL J BORUFF	ROADS/REPAIRS - CARSON	6,705.00
MICHAEL M SALES	PROF SVC - SHERIFF	1,025.00
MICHAEL MUHLBAUER	MEETING - BOARD	120.00
MICHAEL SCHROPP	MEETING - BOARD	40.00
MICHELE LOOS	PROF SVC - CONSERVATION	175.00
MICHELLE CIESLUK	RENT ASSIST - GA	600.00
MIDAMERICAN ENERGY COMPANY	MO BILL - B&G	31,016.38
MIDLANDS HUMANE SOCIETY	CONTRACT SVC - ANIMAL CONTROL	7,335.28
MIDWEST CARD & ID SOLUTIONS LLC	PROF SVC - EMA	53,000.00
MIDWEST COMPLIANCE ASSOCIATES	PROF SVC - PUB HEALTH	68.75
MIDWEST MEDICAL AND SAFETY INC	SUPPLIES - JAIL	255.60
MIDWEST PETROLEUM EQUIPMENT LLC	PROF SVC - SHERIFF	332.00
MIRANDA WACHTER	REIMB EXP - SWIA MHDS REGION	153.27
MMB LLC	ROADS/PARTS	1,714.93
MMIS HOLDINGS LLC	PROF SVC - CONSERVATION	700.00
MOLLY BROWN	REIMB EXP - SWIA MHDS REGION	261.54
MONONA COUNTY (IA)	PRESCRIPTIONS - SWIA MHDS REGION	757.74
MONTGOMERY COUNTY (TN)	SVC FEES - BOARD	42.00
MTS PARTNERS INC	SUPPLIES - SHERIFF	364.00
MUNICIPAL HOUSING AGENCY	RENT ASSIST - GA	50.00
MYRA NIXON	REIMB EXP - RECORDER	65.43
NATHAN BRENSEL	REIMB EXP - SHERIFF	20.12
NATIONAL MEDICAL SERVICES INC	MED SVC - MED EXAMINER	350.00
NATIONAL SAFETY COUNCIL	ROADS/TRAINING	1,047.00
NCH CORPORATION	PROF SVC - B&G	359.17
NEW CENTURY PHYSICIANS OF IOWA PC	MED SVC - JAIL	649.60
NEWMAN SIGNS INC	ROADS/MATERIALS	2,093.99
NEXT PHASE ENVIRONMENTAL INC	PROF SVC - CONSERVATION	74,858.00
NICKOLAS AMDOR	REIMB EXP - SHERIFF	120.30
NISHNA PRODUCTIONS INC	VOC/DAY/HAB/SUP SVC - SWIA MHDS REGION	50,685.27
NISHNABOTNA VALLEY RURAL ELECTRIC COOPERATIVE	ROADS/UTILITIES	2,275.77
NMC GROUP INC	PROF SVC - CONSERVATION	29,790.41
NORTHWEST IOWA YOUTH EMERGENCY SERVICES CENTER	TRANSPORT - SWIA MHDS REGION	207.50
NSG LOGISTICS LLC	ROADS/MATERIALS - UNDERWOOD	15,487.35
OMAHA COMPOUND COMPANY	SUPPLIES - JAIL	10,424.09
OMAHA COUNCIL BLUFFS PLUMBING INC	PROF SVC - JAIL	480.00
OMAHA TRUCK CENTER COMPANY INC	ROADS/PARTS	9,118.99
OMG MIDWEST INC	ROADS/MATERIALS	4,879.00
OMNI CENTRE LLC	RENT - WIC	1,983.00
OPD BUSINESS SOLUTIONS	SUPPLIES - DHS	800.78

OTIS ELEVATOR COMPANY		
OUTDOOR HOME SERVICES HOLDING LLC	PROF SVC - B&G	1,225.00
OUTDOOR POWER GROUP INC	PROF SVC - CONSERVATION	475.00
PAGE COUNTY (IA)	SUPPLIES - CONSERVATION	261.69
PAMELA WURGLER	TRANSPORT - SWIA MHDS REGION	382.75
PARALLEL TECHNOLOGIES INC	RENT ASSIST - GA	1,650.00
PARTEK ENTERPRISES INC	PROF SVC - B&G	203.50
PATAGONIA HEALTH INC	EQUIP - CONSERVATION	699.96
PATRICK J EPPLER	PROF SVC - PUB HEALTH	33,900.00
PAUL FORNEY	REIMB EXP - CO ATTORNEY	270.00
PENNIE SMITH	REIMB EXP - CO ATTORNEY	270.00
PIERCE PUMP INC	REIMB EXP - SHERIFF	711.57
POLK COUNTY (IA)	PROF SVC - CONSERVATION	465.00
POPCO INC	TRAINING - SWIA MHDS REGION	313.55
POTTAWATTAMIE COUNTY BOARD OF SUPERVISORS	MO BILL - PLANNING	57.00
POTTAWATTAMIE COUNTY ATTORNEY	INDERECT COST - WIC	6,072.95
POTTAWATTAMIE COUNTY CONSERVATION BOARD	FORFEITURE FUNDS - SHERIFF	959.60
POTTAWATTAMIE COUNTY DEVELOPMENT CORPORATION	PROCESSING FEES - CONSERVATION	19,946.52
POTTAWATTAMIE COUNTY IT DEPARTMENT	PROF SVC - PUB HEALTH	100.00
POTTAWATTAMIE COUNTY JAIL	REIMB LICENSE - SWIA MHDS REGION	463.00
POTTAWATTAMIE COUNTY SHERIFF	PRESCRIPTIONS - SWIA MHDS REGION	2,166.35
POTTAWATTAMIE COUNTY TREASURER	TRANSPORT - BOARD	8,562.74
PRAIRIE CONSTRUCTION COMPANY	ROADS/UTILITIES	185.60
PRECISION DYNAMICS CORPORATION	ROADS/PAY APP 3	501,010.65
PROFESSIONAL DEVELOPMENT ACADEMY LLC	SUPPLIES - JAIL	1,447.70
PROMISE PARTNERS	PROF SVC - PUB HEALTH	1,000.00
QUADIENT INC	REGISTRATION - SWIA MHDS REGION	120.00
QUADIENT LEASING USA INC	POSTAGE - VARIOUS	2,940.69
QWEST CORPORATION	PROF SVC - SHERIFF	271.11
R & S WASTE DISPOSAL LLC	MO BILL - CONSERVATION	205.39
R J THOMAS MANUFACTURING COMPANY INC	ROADS/UTILITIES	890.06
RADIOLOGY CONSULTANTS PC	EQUIP - CONSERVATION	10,442.00
RAFAEL RODRIGUEZ	MED SVC - JAIL	276.50
RANDY LAMP	REIMB EXP - IT	62.23
RANDY LEE	MEETING - BOARD	80.00
RAY MARTIN COMPANY OF OMAHA	SUPPLIES - SHERIFF	467.50
RDO TRUCK CENTER LLC	PROF SVC - NON-DEPARTMENTAL	58,884.42
RED OAK WELDING SUPPLIES	ROADS/PARTS	1,506.24
REGIONAL WATER INC	ROADS/SUPPLIES	324.20
REM DEVELOPMENTAL SERVICES INC	MO BILL - CONSERVATION	1,690.15
REPORTING SERVICES LLC	RENT ASSIST - SWIA MHDS REGION	386.61
RICHARD C ROSAS	TRANSCRIPTS - CO ATTORNEY	1,292.30
RICHARD DEAN SCHNITKER	PROF SVC - B&G	415.00
RICHARD HIATT	MEETING - BOARD	80.00
RICOH USA INC	REIMB EXP - SHERIFF	307.60
ROBERT L WATSON	PROF SVC - DHS	1,279.49
ROBERT M MCCALL JR	RENT ASSIST - GA	1,200.00
ROBERT PROKUPEK	PROF SVC - B&G	39,970.00
ROBERT TROUTNER	MEETING - BOARD	80.00
ROBERT YARD	WELL RENOVATION - ENV HEALTH	1,000.00
ROGER DOLLEN	PROF SVC - CONSERVATION	80.00
RONALD JAMES CISAR	RENT ASSIST - GA	400.00
RONALD LAINSON	PRESENTER - CONSERVATION	750.00
S & L SANITATION ENTERPRISES INC	ROADS/UTILITIES - HANCOCK	328.00
SAFETY KLEEN SYSTEMS INC	MO BILL - CONSERVATION	124.00
SAFETY REPORTS.COM INC	ROADS/SUPPLIES	670.39
SAM ASHER COMPUTING SERVICES INC	LICENSE - HR/RISK	1,303.26
SANDAU BROTHERS SIGN COMPANY INC	MO BILL - IT	253.56
SARPY COUNTY (NE)	PROF SVC - PUB HEALTH	2,370.00
SCHILDBERG CONSTRUCTION COMPANY INC	SVC FEES - CO ATTORNEY	22.23
SCHROER & ASSOCIATES PC	ROADS/ROCK	258,471.57
SCOTT BELT	PROF SVC - JAIL	1,080.00
SEAT	REIMB EXP - BOARD	69.65
SECURITY EQUIPMENT INC	DUES - AUDITOR	200.00
SEIDL & SEIDL PLC	PROF SVC - CONSERVATION	1,044.60
SHARON L BEDSAUL	LEGAL SVC - SWIA MHDS REGION	355.00
SHAWN HATCHER	PROF SVC - CONSERVATION	16.05
SHELBY COUNTY (IA)	PROF SVC - CONSERVATION	2,000.00
SHELLEY WELTER	TRANSPORT - SWIA MHDS REGION	64.00
SHELLY HOVEY	REIMB EXP - SWIA MHDS REGION	740.15
SHIVE HATTERY INC	REIMB EXP - SWIA MHDS REGION	460.47
SIOUX CITY TRUCK SALES INC	PROF SVC - CONSERVATION	14,010.20
SNYDER & ASSOCIATES INC	ROADS/PARTS	25.20
SOUTHWEST IOWA JUVENILE EMERGENCY SERVICES	RAILROAD HWY TRL - NON-DEPARTMENTAL	6,952.85
SOUTHWEST IOWA LEADERSHIP ACADEMY	QTRLY BILL - BOARD	281,787.86
SOUTHWEST IOWA MENTAL HEALTH CENTER	CONTRIBUTION - BOARD	2,500.00
SOUTHWEST IOWA PLANNING COUNCIL	MED SVC - SWIA MHDS REGION	640.26
SPEE DEE DELIVERY SERVICE INC	TRANSPORT - SWIA MHDS REGION	3,261.83
STANDARD AUTO SERVICE CORP	PROF SVC - DHS	539.33
STAPLES CONTRACT AND COMMERCIAL INC	PROF SVC - SHERIFF	116.50
STAPLES INC	SUPPLIES - DHS	126.00
STAPLES INC	EQUIP - BOARD	6,096.40
STATE INDUSTRIAL PRODUCTS CORPORATION	SUPPLIES - DHS	1,412.53
STATE OF IOWA	ROADS/SUPPLIES	577.40
STATE OF IOWA	MED SVC - MED EXAMINER	39,245.60
STATE OF IOWA DEPARTMENT OF JUSTICE	SUPPLIES - CO ATTORNEY	250.00
STATE OF IOWA EDUCATION IOWA PUBLIC BROADCASTING DIVISION	SUPPLIES - CO ATTORNEY	330.00
STATE OF IOWA SECRETARY OF STATE	RENT - COMMUNICATIONS	1,180.90
STATE UNIVERSITY OF IOWA	NOTARY - SHERIFF	60.00
	PROF SVC - ENV HEALTH	461.50

STELLA HUERTER	MEETING - PLANNING	40.07
STERICYCLE INC	PROF SVC - WIC	130.88
STEVEN FOX	REIMB EXP - CONSERVATION	100.00
STEVEN LELAND	REIMB EXP - CONSERVATION	1,239.64
STI FIREARMS LLC	EQUIP - SHERIFF	30,819.20
SUNSHINE HOMES INC	SUPPORT SVC - SWIA MHDS REGION	16,105.66
SUSAN KLINDT	MEETING - BOARD	120.00
SUSAN MILLER	REIMB EXP - BOARD	394.11
SUSANN CONLON	PROF SVC - CONSERVATION	572.50
SUZANNE WATSON	REIMB EXP - SWIA MHDS REGION	461.12
SYMPHONY DIAGNOSTIC SERVICES NO 1	MED SVC - JAIL	134.00
SYNCHRONY BANK	MO BILL - CONSERVATION	467.65
SYN-TECH SYSTEMS INC	PROF SVC - SHERIFF	119.50
SYSCO LINCOLN INC	SUPPLIES - CONSERVATION	9,203.01
T HALL ABC INC	SUPPLIES - B&G	161.60
T627 INC	PROF SVC - B&G	18,904.45
TERRY MOORES	PROF SVC - CONSERVATION	215.00
THE BOARD OF REGENTS OF THE UNIVERSITY OF NEBRASKA	MED SVC - CO ATTORNEY	250.00
THE COMMUNITY SUPPORTS NETWORK INC	SUPPORT SVC - SWIA MHDS REGION	2,200.00
THE FILTER SHOP INC	SUPPLIES - B&G	178.38
THE PRIDE GROUP INC	RCF - SWIA MHDS REGION	36,092.06
THE RADAR SHOP INC	PROF SVC - SHERIFF	73.00
THE SHERWIN WILLIAMS COMPANY	SUPPLIES - B&G	56.27
THIELE GEOTECH INC	ROADS/SERVICE	1,890.00
THINK SPACE IT	PROF SVC - IT	10,341.50
TIM NICHOLS	SUPPORT SVC - SWIA MHDS REGION	2,836.75
TIMOTHY MATULA	PROF SVC - CONSERVATION	450.00
TIMOTHY TEMEYER	MEETING - BOARD	80.00
TIMOTHY WICHMAN	REIMB EXP - BOARD	230.78
TONY ALFERS	PROF SVC - CONSERVATION	332.00
TORYANN CROZIER	PROF SVC - CONSERVATION	225.00
TRACY NOSEKABEL	REIMB EXP - ENV HEALTH	180.78
TRANSUNION RISK AND ALTERNATIVE DATA SOLUTIONS INC	PROF SVC - SHERIFF	75.00
TRAVIS GAYER	MEETING - BOARD	80.00
TRAVIS HEALY	REIMB EXP - SHERIFF	96.30
TREASURER OF STATE OF IOWA	MED SVC - SWIA MHDS REGION	24,827.21
TREY CARSTENS	REIMB EXP - SHERIFF	228.00
TRISHA BERNHARDS	REIMB EXP - JAIL	79.87
TRIVIUM LIFE SERVICES	SUPPORT SVC - SWIA MHDS REGION	18,393.26
TW VENDING INC	SUPPLIES - JAIL	182.17
TYLER TECHNOLOGIES INC	PROF SVC - IT	19,326.69
ULINE INC	SUPPLIES - SHERIFF	1,281.28
UNIFORM DEN INC	UNIFORMS - SHERIFF	77.56
UNITED SEEDS INC	SUPPLIES - CONSERVATION	787.50
UNITED STATES CELLULAR CORPORATION	MO BILL - COMMUNICATIONS	630.61
UNITED STATES POSTAL SERVICE	POSTAGE - CONSERVATION	63.00
US BANK NATIONAL ASSOCIATION	MO BILL - EMA	3,756.79
US BANK NATIONAL ASSOCIATION	MO BILL - VARIOUS	12,868.49
US POSTAL SERVICE (QUADIENT)	POSTAGE - TREASURER	9,000.00
VAN WALL EQUIPMENT	ROADS/SERVICE	1,186.59
VERIZON COMMUNICATIONS INC	MO BILL - SHERIFF	13,811.48
VISUAL EDGE INC	PROF SVC - SWIA MHDS REGION	80.02
VISUAL EDGE INC	ROADS/SUPPLIES - CENTRAL	51.55
VOCATIONAL DEVELOPMENT CENTER INC	VOC/DAY - SWIA MHDS REGION	5,454.34
W W GRAINGER INC	SUPPLIES - B&G	4,838.48
WALDSTEIN HVAC LLC	PROF SVC - CONSERVATION	475.00
WAUBONSIE MENTAL HEALTH CENTER	CRISIS RESPONSE - SWIA MHDS REGION	17,945.00
WELDON PARTS INC	ROADS/PARTS	1,222.72
WELLS FARGO FINANCIAL LEASING INC	PROF SVC - DHS	971.62
WEST CENTRAL COMMUNITY ACTION	RENT - WIC	520.00
WEST PUBLISHING CORPORATION	PROF SVC - CO ATTORNEY	4,746.04
WESTERN ENGINEERING COMPANY INC	ROADS/MATERIALS	6,813.24
WESTLAKE HARDWARE INC	SUPPLIES - CONSERVATION	154.28
WEX BANK	ROADS/FUEL	34,426.18
WINDSTREAM HOLDINGS INC	MO BILL - COMMUNICATIONS	833.56
WITT O BRIENS LLC	PROF SVC - PUB HEALTH	12,423.00
WOODCRAFTERS PRODUCTS	PROF SVC - CONSERVATION	245.05
WORKFORCE SOLUTIONS LLC	REGISTRATION - SHERIFF	285.00
WORLD CUP SUPPLY INC	SUPPLIES - CONSERVATION	596.57
YANT TESTING SUPPLY & EQUIPMENT INC	PROF SVC - JAIL	19,351.00
YLONDA MAGUIRE	REIMB EXP - SWIA MHDS REGION	99.56
YOSEF MCCARTER	RENT ASSIST - SWIA MHDS REGION	500.00
ZACHARIAH KAHLE	PROF SVC - ENV HEALTH	325.00
ZACHARIE NORMAN	REIMB EXP - SHERIFF	149.24
ZIMMERMAN SALES & SERVICE INC	PROF SVC - ENV HEALTH	420.00
ZION RECOVERY SERVICES INC	TLP - SWIA MHDS REGION	35,831.59
		<hr/> <hr/> 4,387,710.24

Fund Summary

Fund	Payment Amount
0001 - GENERAL BASIC FUND	979,415.87
0002 - GENERAL SUPPLEMENTAL FUND	314,676.96
0003 - GAMBLING RESOURCES FUND	114,872.95
0005 - WIC/FEDERAL FUNDING FUND	10,546.07
0007 - LOST CONSERVATION FUND	1,308.24
0011 - RURAL SERVICES BASIC FUND	38,786.53
0017 - CO ATTORNEY DEL FINE COLLECT FUN	6,145.18
0018 - SPECIAL LAW ENFORCEMENT FUND	959.60
0019 - PROPERTY ACQUISITION/IMPROVEMENT/MAINTENANCE FUND	236,522.79

0020 - SECONDARY ROADS FUND	582,130.29
0023 - REAP FUND	4,950.00
0027 - CO CONSERV LAND ACQ	12,789.46
0037 - LOST SOIL CONS EAST FUND	2,948.00
0042 - AMERICAN RESCUE PLAN ACT (ARPA)	120,000.00
0052 - VETERANS RELOCATION ALLOCATION FUND	7,500.00
1620 - BOND SERIES 2020A CAPITAL FUND	409.76
1630 - BOND SERIES 2021A CAPITAL FUND	86,380.00
1640 - BOND SERIES 2021B CAPITAL FUND	207,004.48
1650 - BOND SERIES 2022 CAPITAL FUND	143,775.25
1700 - BIKE TRAIL FUND	6,952.85
1935 - 2021C ROADS CAPITAL PROJECT FUND	508,446.65
4000 - EMER MANAGEMENT SERVICE FUND	59,146.20
4010 - E911 FUND	10,385.36
4155 - MHDS REGION FUND	<u>931,657.75</u>
	4,387,710.24

TO: Lea Voss, County Treasurer
 Andrew Brown, County Sheriff
 Matt Wyant, County Planning Director

FROM: Gina Hatcher

Request for County Department Comments

DATE: March 23rd, 2023

ESTABLISHMENT: **NEW- WESTFAIR ASSOCIATION**

OWNER: see attached

RECEIVED
 2023 MAR 24 PM 12:02
 COUNTY OF CLATSOP
 CLATSOP COUNTY CLERK
 1111 COMMERCIAL STREET
 ASTORIA, OR 97103-1111

LEGAL DESCRIPTION: See attached property record.

The Auditor has received the attached request for the above class permits/sales/services. Please supply the following information for the Board of Supervisors within five (5) working days. Additional explanation may be given in the form of comments below and/or attachments.

DEPARTMENT	COMMENTS	YES	NO
TREASURER	Free from certified taxes and special assessments		
PLANNING	Properly zoned		
	Nuisance violations		
	Septic system violations		
SHERIFF	Complaints received	X	
	Citations issued at this establishment	X	
	Owner convicted of a felony within the last 5 years		X

Added upon Request to Sheriff

COMMENTS: 3 calls for service Signature AI Sa 78-1
 2 resulted in arrests

TO: Lea Voss, County Treasurer
Andrew Brown, County Sheriff
Matt Wyant, County Planning Director

FROM: Gina Hatcher

Request for County Department Comments

DATE: March 23rd, 2023

ESTABLISHMENT: NEW- WESTFAIR ASSOCIATION

OWNER: see attached

LEGAL DESCRIPTION: See attached property record.

The Auditor has received the attached request for the above class permits/sales/services. Please supply the following information for the Board of Supervisors within five (5) working days. Additional explanation may be given in the form of comments below and/or attachments.

DEPARTMENT	COMMENTS	YES	NO
TREASURER	Free from certified taxes and special assessments		
PLANNING	Properly zoned	X	
	Nuisance violations		X
	Septic system violations		X
SHERIFF	Complaints received		
	Citations issued at this establishment		
	Owner convicted of a felony within the last 5 years		

COMMENTS

Signature



TO: Lea Voss, County Treasurer
Andrew Brown, County Sheriff
Matt Wyant, County Planning Director

FROM: Gina Hatcher

Request for County Department Comments

DATE: March 23rd, 2023

ESTABLISHMENT: **NEW- WESTFAIR ASSOCIATION**

OWNER: see attached

LEGAL DESCRIPTION: See attached property record.

The Auditor has received the attached request for the above class permits/sales/services. Please supply the following information for the Board of Supervisors within five (5) working days. Additional explanation may be given in the form of comments below and/or attachments.

DEPARTMENT	COMMENTS	YES	NO
TREASURER	Free from certified taxes and special assessments	<input checked="" type="checkbox"/>	<input type="checkbox"/>
PLANNING	Properly zoned	<input type="checkbox"/>	<input type="checkbox"/>
	Nuisance violations	<input type="checkbox"/>	<input type="checkbox"/>
	Septic system violations	<input type="checkbox"/>	<input type="checkbox"/>
SHERIFF	Complaints received	<input type="checkbox"/>	<input type="checkbox"/>
	Citations issued at this establishment	<input type="checkbox"/>	<input type="checkbox"/>
	Owner convicted of a felony within the last 5 years	<input type="checkbox"/>	<input type="checkbox"/>
		<input type="checkbox"/>	<input type="checkbox"/>

COMMENTS

Signature 

(App-176321)

License Application

- **Applicant**

Name of Legal Entity : THE WESTFAIR ASSOCIATION

Name of Business(DBA) : Westfair

Address of Premises : 22984 U.S. 6

Premises Suite/Apt Number :

City : Council Bluffs

County : Pottawattamie

Zip : 51503

Business : (712) 242-3323

Mailing Address: 22984 U.S. 6

City : Council Bluffs

State : Iowa

Zip : 51503

- **Contact Person**

Name : Rick Killion

Phone : (402) 981-2426

Email : rkillion@anbank.com

- **License Information**

License Number :

License/Permit Type : Special Class C Retail Alcohol License

Term : 8 Month

Status : Submitted to Local Authority

Tentative Effective Date : 2023-04-01

Tentative Expiration Date : 2023-12-01

Sub-Permits : Special Class C Retail Alcohol License

Privileges :

Last Day of Business :

- **Status of Business**

Business Type : Nonprofit corporation organized under chapter 504.

- **Ownership**

The Westfair Association

Federal Id : 42-1020703

City : Council Bluffs

State : Iowa

Zip : 51503

% of ownership : 100

Rick Killion

City : Council Bluffs

State : Iowa

Zip : 51503

Position : Owner

% of ownership :

U.S. Citizen : Yes

- **Insurance Company Information**

Insurance Company : Illinois Casualty Co

Policy Effective Date : 2023-04-01

Policy Expiration : 2024-03-31

Bond Effective :

Dram Cancel Date :

Outdoor Service Effective :

Outdoor Service Expiration :

Temp Transfer Effective Date :

Temp Transfer Expiration Date :

▪

▪

7543 24 100 004

--- Permanent Property Address --- Mailing Address ---
WESTFAIR ASSN WESTFAIR ASSN
22984 HWY 6 C/O PEOPLES NATL BANK
COUNCIL BLUFFS, IA 51503 PO BOX 698
COUNCIL BLUFFS, IA 51502

District: 024 GARNER TWP/UNDERWOOD SCH
District: 024 GARNER TWP/UNDERWOOD SCH

==== REAL ESTATE TAXES ON TREASURER'S WEBPAGE =====
Go to: https://www.municipalonlinepayments.com/pottawattamiecoia/tax/search/detail/754324100004

==== TAX DESCRIPTION* =====
* Not to be used on legal documents

GARNER TWP 24-75-43 SW NW & NW NW EXC COMM NW COR E842.5' S363.23' W515.68' S552.77' W320' N916'TO POB

==== ASSESSED VALUE =====
* Class is for Assessment purposes only - Not Zoning

Table with 7 columns: 2022, Res. Land, Comm. Land, Current Value (Dwelling, Improvement), Total, Class. Rows: Full Value, Exempt, Net Total.

Table with 7 columns: 2021, Agri. Land, Dwelling, Prior Year Value (Improvement, Total), Ag Acres, Class. Rows: Full Value, Exempt, Net Total.

- ==== EXEMPTIONS/CREDITS APPLIED =====
2021 AE32 AGRICULTURAL SOCIETY
2021 AE32 AGRICULTURAL SOCIETY68.53 acres
2022 AE32 AGRICULTURAL SOCIETY
2022 AE32 AGRICULTURAL SOCIETY

==== OWNERS =====
* Book/Page LINKS TO RECORDER'S WEBPAGE

1 D WESTFAIR ASSN book/page:

==== SALES HISTORY =====

Table with 4 columns: Sale Date, Amount, Code, Book/Page. Rows: 03/14/1978, 04/06/1966.

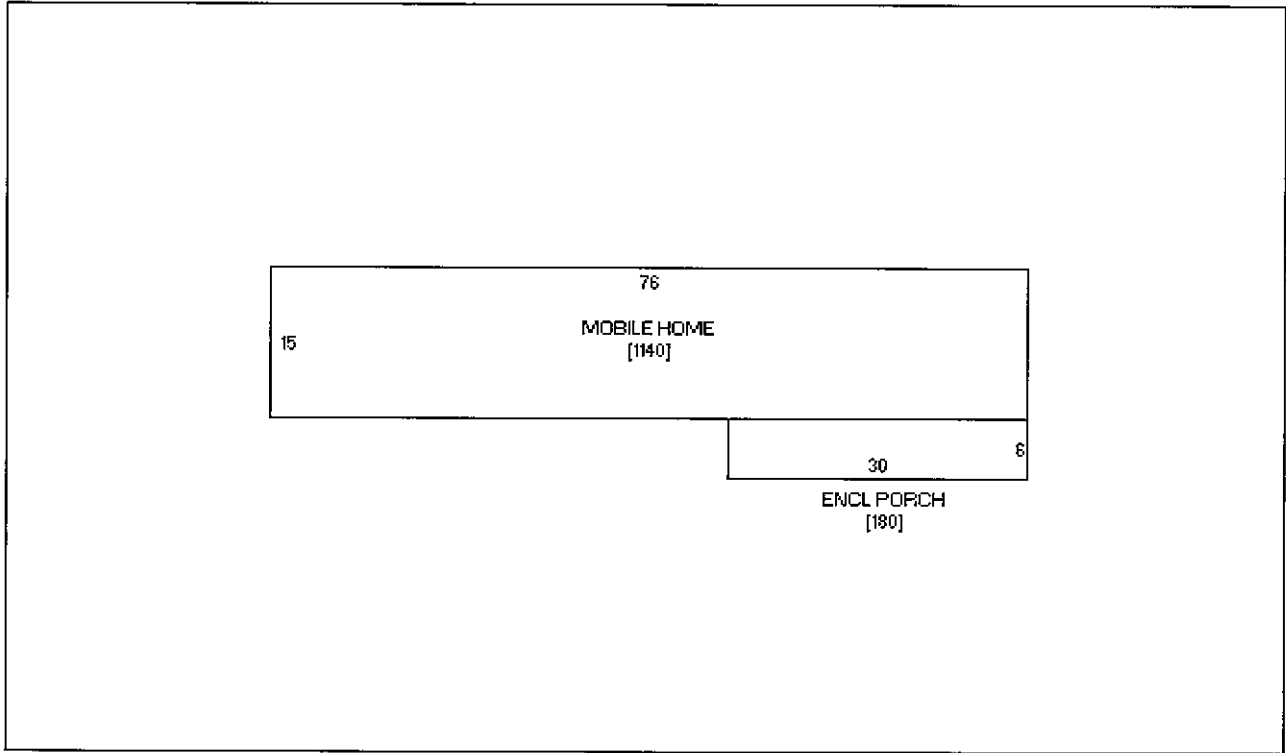
==== ASSESSMENT DATA =====

PDF: 30 MAP: GARNER TWP COMM-10
Date Reviewed: 11/24/21 GMS
LAND.....2985166 sqFt 68.53 acres

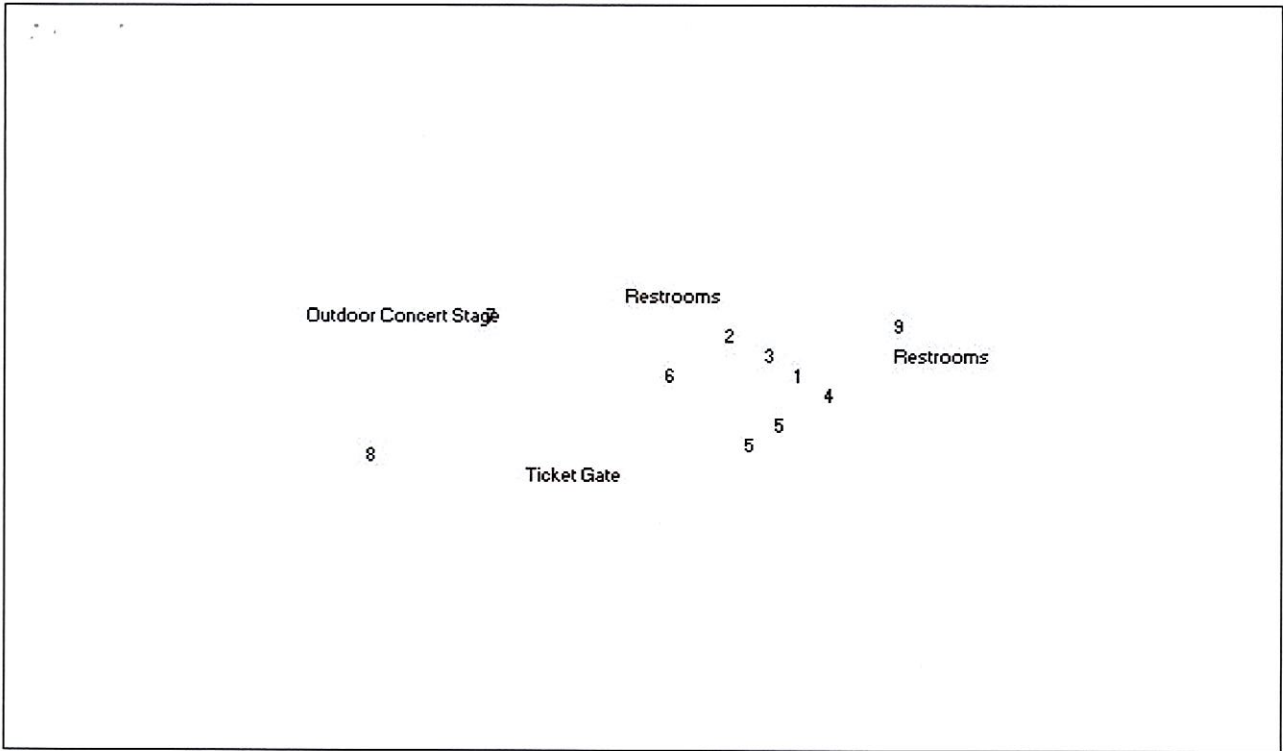
Residence 1 of 1 -- Mobile Home Housing
BUILDING.....Mfd Home (Single) 6/0 Rooms Above/Below 3/0 Bedrooms Above/Below 1140 SF Base AC
Built:2017 Normal Bsmt: Full Bsmt Finish: 15 SF Attic Finish: None
FINISH.....Foundation: Conc Exterior: Vinyl Roof: Asph / Gable
Interior: Drwl Flooring: Carpet / Vinyl
PLUMBING.....1 Full Bath 1 Shower Stall Bath
PORCHES.....180 SF 1S Frame Enclosed 180 SF Bsmt
YARD EXTRAS..Restrooms Quantity=323.00 Square Feet, Height=0
Restrooms Quantity=1,156.00 Square Feet, Height=0
Outdoor Concert Stage Quantity=4,675.00 Square Feet, Height=0

Ticket Gate Quantity=1,100.00 Square Feet, Height=0

##	Outbuilding Type / Description	Dimension	Cap/Area	Year
1	Steel Utility Building/Metal/Steel PP#2	80 x 120	9600 SF	1975
2	Steel Utility Building/Metal/Steel PP#3	80 x 118	9440 SF	1975
3	Barn - Confined Cattle/Metal/Pole PP#4	46 x 192	8832 SF	1975
4	Barn - Confined Cattle/Metal/Pole PP#5 (2)	30 x 120	3600 SF	1975
5	Steel Utility Building/Metal/Steel PP#6	80 x 120	9600 SF	1975
6	Steel Utility Building/Metal/Steel PP#7	36 x 80	2880 SF	1999
7	Steel Utility Building/Metal/Steel PP#8	26 x 30	780 SF	1975
8	Steel Utility Building/Metal/Pole PP#9	31 x 52	1612 SF	1975
9	Steel Utility Building/Metal/Steel PP#1	116 x 112	12992 SF	1975



22984 HWY 6, WESTFAIR ASSN

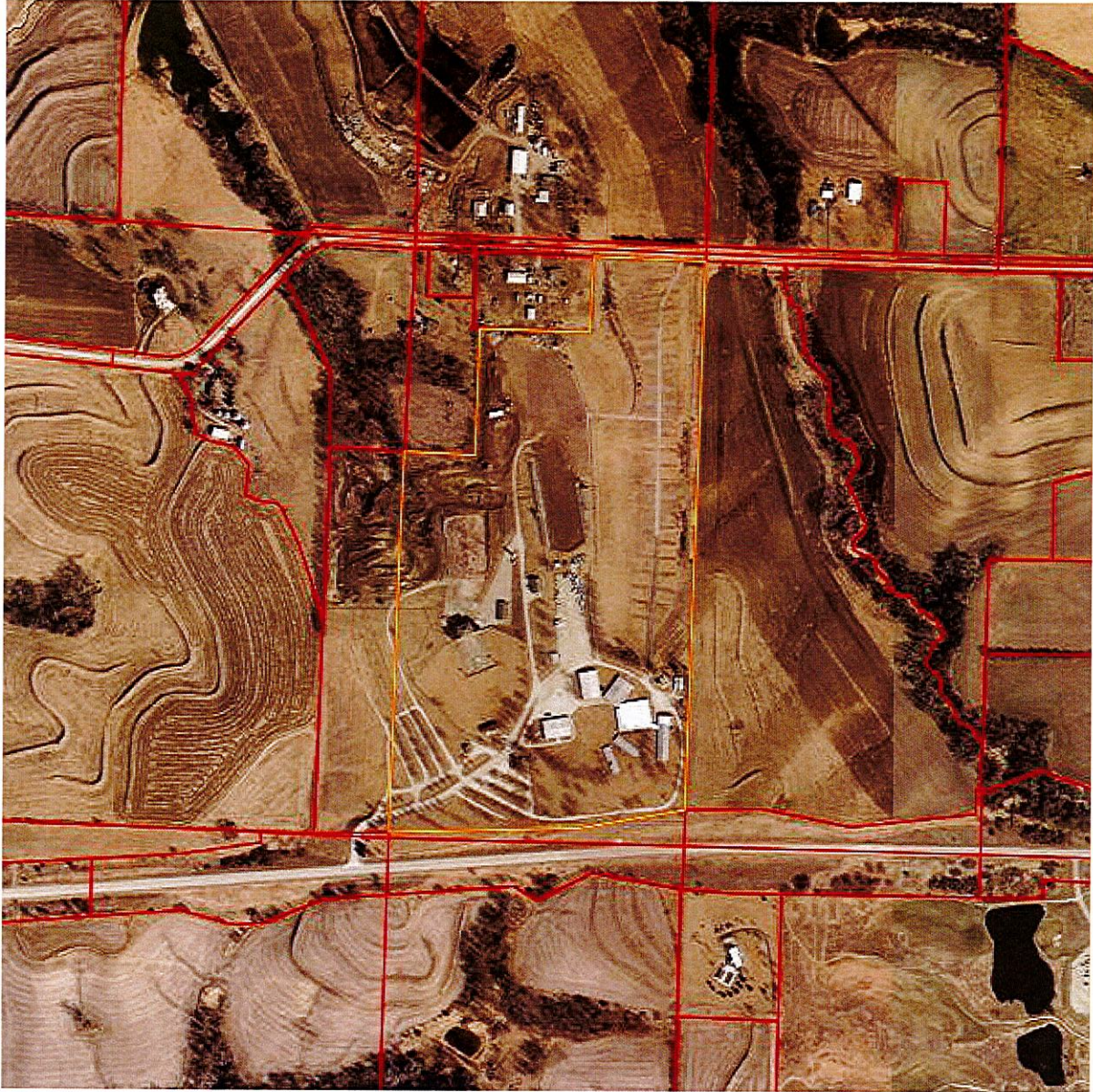


22984 HWY 6, WESTFAIR ASSN



22984 HWY 6, WESTFAIR ASSN, 1 01/07/2019

[Zoom Out](#) [Zoom In](#)



4800ft x 4800ft

[Click any parcel to go to its web page](#)

Spring 2022 aerial

See [more maps](#) at the [County GIS Department](#).

As of:

[Find Property](#) [Res Sales](#) [Comm/Ind Sales](#)

TO: Lea Voss, County Treasurer
Andrew Brown, County Sheriff
Matt Wyant, County Planning Director

FROM: Gina Hatcher

Request for County Department Comments

DATE: April 4th, 2023

ESTABLISHMENT: **5 DAY PERMIT – KANESVILLE RIDERS HONOR GUARD**

OWNER: see attached

LEGAL DESCRIPTION: See attached property record.

The Auditor has received the attached request for the above class permits/sales/services. Please supply the following information for the Board of Supervisors within five (5) working days. Additional explanation may be given in the form of comments below and/or attachments.

DEPARTMENT	COMMENTS	YES	NO
TREASURER	Free from certified taxes and special assessments		
PLANNING	Properly zoned		
	Nuisance violations		
	Septic system violations		
SHERIFF	Complaints received	3	
	Citations issued at this establishment		X
	Owner convicted of a felony within the last 5 years		X

COMMENTS

Signature

AI Brown 78-1

*3 calls for service
2 resulted in arrests*

TO: Lea Voss, County Treasurer
Andrew Brown, County Sheriff
Matt Wyant, County Planning Director

FROM: Gina Hatcher

Request for County Department Comments

DATE: April 4th, 2023

ESTABLISHMENT: 5 DAY PERMIT – KANESVILLE RIDERS HONOR GUARD

OWNER: see attached

LEGAL DESCRIPTION: See attached property record.

The Auditor has received the attached request for the above class permits/sales/services. Please supply the following information for the Board of Supervisors within five (5) working days. Additional explanation may be given in the form of comments below and/or attachments.

DEPARTMENT	COMMENTS	YES	NO
TREASURER	Free from certified taxes and special assessments		
PLANNING	Properly zoned	✓	
	Nuisance violations		✓
	Septic system violations		✓
SHERIFF	Complaints received		
	Citations issued at this establishment		
	Owner convicted of a felony within the last 5 years		

COMMENTS

Signature



TO: **Lea Voss, County Treasurer**
Andrew Brown, County Sheriff
Matt Wyant, County Planning Director

FROM: Gina Hatcher

Request for County Department Comments

DATE: April 4th, 2023

ESTABLISHMENT: **5 DAY PERMIT – KANESVILLE RIDERS HONOR GUARD**

OWNER: see attached

LEGAL DESCRIPTION: See attached property record.

The Auditor has received the attached request for the above class permits/sales/services. Please supply the following information for the Board of Supervisors within five (5) working days. Additional explanation may be given in the form of comments below and/or attachments.

DEPARTMENT	COMMENTS	YES	NO
TREASURER	Free from certified taxes and special assessments	✓	
PLANNING	Properly zoned		
	Nuisance violations		
	Septic system violations		
SHERIFF	Complaints received		
	Citations issued at this establishment		
	Owner convicted of a felony within the last 5 years		

COMMENTS

Signature

Lea A Voss

License Application

- **Applicant**

Name of Legal Entity : KANESVILLE RIDERS HONOR GUARD, INC.

Name of Business(DBA) : KANESVILLE RIDERS HONOR GUARD

Address of Premises : 22984 U.S. 6

Premises Suite/Apt Number :

City : Council Bluffs

County : IA

Zip : 51501

Business : (402) 659-3823

Mailing Address: 3000 Avenue B

City : Council Bluffs

State : Iowa

Zip : 51501

- **Contact Person**

Name : KEITH CONFER

Phone : (402) 659-3823

Email : keith.confer@fbfs.com

- **License Information**

License Number :

License/Permit Type : Special Class C Retail Alcohol License

Term : 5 Day

Status : Submitted to Local Authority

Effective Date :

Expiration Date :

Sub-Permits : Special Class C Retail Alcohol License

Privileges : Outdoor Service

Last Day of Business :

- **Status of Business**

Business Type : Nonprofit entity which has a principal office in the State of Iowa.

- **Ownership**

No Results Found

- **Insurance Company Information**

Insurance Company : Founders Insurance Company

Policy Effective Date : 2023-05-19

Policy Expiration : 2023-05-24

Bond Effective :

Dram Cancel Date :

Outdoor Service Effective :

Outdoor Service Expiration :

Temp Transfer Effective Date :

Temp Transfer Expiration Date :

-

-

[Find Property](#) [Res Sales](#) [Comm/Ind Sales](#)

7543 24 100 004

--- Permanent Property Address ---	----- Mailing Address -----
WESTFAIR ASSN	WESTFAIR ASSN
22984 HWY 6	C/O PEOPLES NATL BANK
COUNCIL BLUFFS, IA 51503	PO BOX 698
	COUNCIL BLUFFS, IA 51502

District: 024 GARNER TWP/UNDERWOOD SCH
 District: 024 GARNER TWP/UNDERWOOD SCH

===== REAL ESTATE TAXES ON TREASURER'S WEBPAGE =====
 Go to: <https://www.municipalonlinepayments.com/pottawattamiecoia/tax/search/detail/754324100004>

===== TAX DESCRIPTION* =====

* Not to be used on legal documents

GARNER TWP 24-75-43 SW NW & NW NW EXC COMM NW COR E842.5' S363.23' W515.68' S552.77' W320' N916'TO
 POB

===== ASSESSED VALUE =====

* Class is for Assessment purposes only - Not Zoning

2023	Current Value				Total	Class
	Res. Land	Comm. Land	Dwelling	Improvement		
Full Value	\$14,506	\$710,794	\$0	\$717,200	\$1,442,500	C/R
Exempt	\$14,506	\$710,794	\$0	\$717,200	\$1,442,500	C/R
Net Total	\$0	\$0	\$0	\$0	\$0	C/R

2022	Prior Year Value				Total	Class
	Res. Land	Comm. Land	Dwelling	Improvement		
Full Value	\$14,506	\$710,794	\$95,900	\$436,900	\$1,258,100	C/R
Exempt	\$14,506	\$710,794	\$95,900	\$436,900	\$1,258,100	C/R
Net Total	\$0	\$0	\$0	\$0	\$0	C/R

===== EXEMPTIONS/CREDITS APPLIED =====

2022 AE32 AGRICULTURAL SOCIETY
 2022 AE32 AGRICULTURAL SOCIETY
 2023 AE32 AGRICULTURAL SOCIETY
 2023 AE32 AGRICULTURAL SOCIETY

===== OWNERS =====

* Book/Page LINKS TO RECORDER'S WEBPAGE

1 D WESTFAIR ASSN book/page:

===== SALES HISTORY =====

Sale Date	Amount	Code	Book/Page	
03/14/1978	65000	<u>D000</u>	0078/20394	multiple parcel sale
04/06/1966	39500	<u>D000</u>	1415/00081	multiple parcel sale

===== ASSESSMENT DATA =====

PDF: 30 MAP: GARNER TWP COMM-10

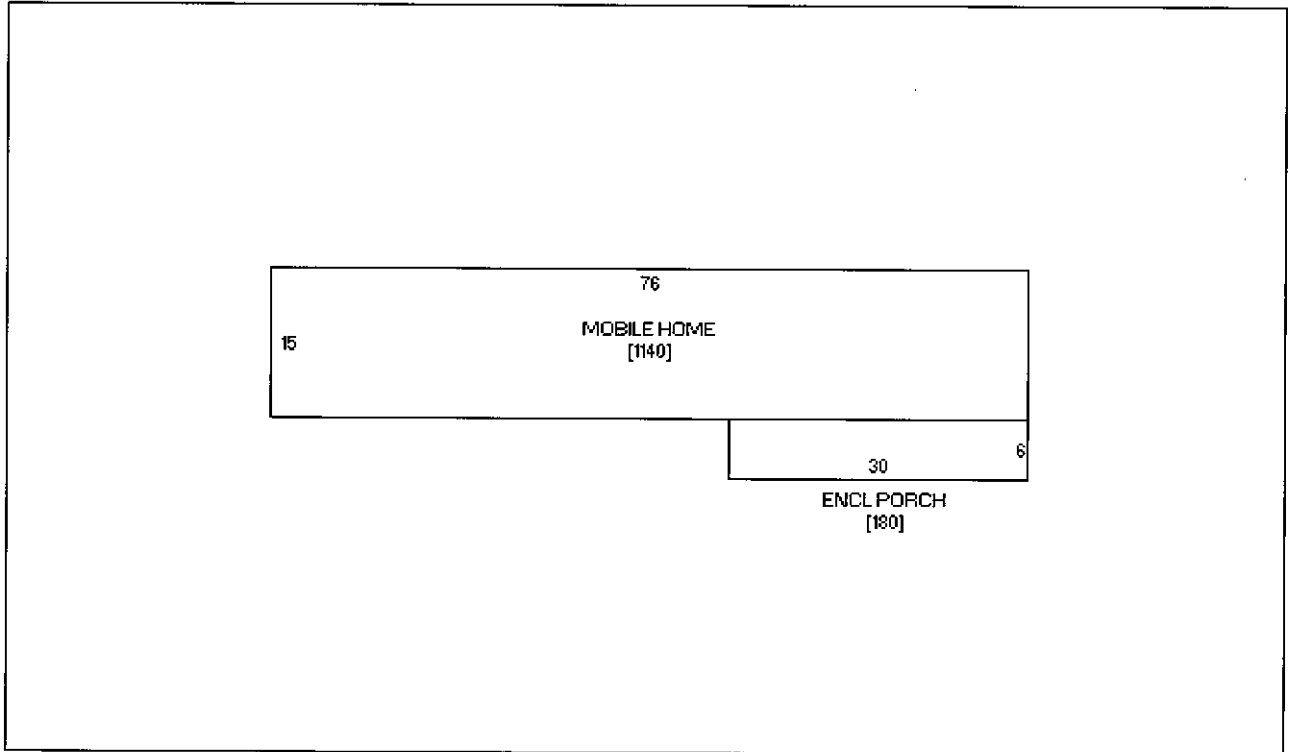
Date Reviewed: 11/24/21 GMS

LAND.....2985166 sqFt 68.53 acres

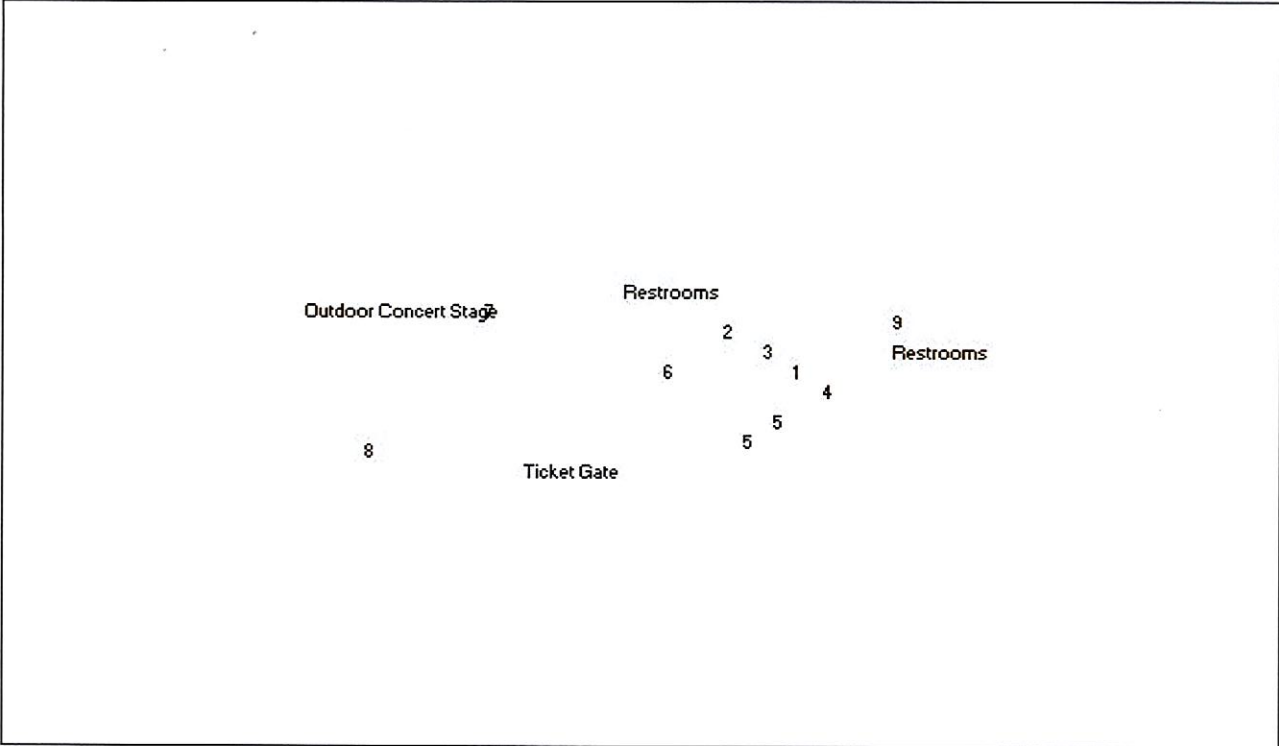
Residence 1 of 1 -- Mobile Home Housing
 BUILDING.....Mfd Home (Single) 6/0 Rooms Above/Below 3/0 Bedrooms Above/Below 1140 SF Base AC
 Built:2017 Normal Bsmt: Full Bsmt Finish: 15 SF Attic Finish: None
 FINISH.....Foundation: Conc Exterior: Vinyl Roof: Asph / Gable
 Interior: Drwl Flooring: Carpet / Vinyl
 PLUMBING.....1 Standard Bath - 3 Fixt 1 Shower Stall Bath -3 Fixt
 PORCHES.....180 SF 1S Frame Enclosed 180 SF Bsmt
 YARD EXTRAS..Restrooms Quantity=323.00 Square Feet, Height=0
 Restrooms Quantity=1,156.00 Square Feet, Height=0
 Outdoor Concert Stage Quantity=4,675.00 Square Feet, Height=0

Ticket Gate Quantity=1,100.00 Square Feet, Height=0

##	Outbuilding Type / Description	Dimension	Cap/Area	Year
1	Steel Utility Building/Metal/Steel PP#2	80 x 120	9600 SF	1975
2	Steel Utility Building/Metal/Steel PP#3	80 x 118	9440 SF	1975
3	Barn - Confined Cattle/Metal/Pole PP#4	46 x 192	8832 SF	1975
4	Barn - Confined Cattle/Metal/Pole PP#5 (2)	30 x 120	3600 SF	1975
5	Steel Utility Building/Metal/Steel PP#6	80 x 120	9600 SF	1975
6	Steel Utility Building/Metal/Steel PP#7	36 x 80	2880 SF	1999
7	Steel Utility Building/Metal/Steel PP#8	26 x 30	780 SF	1975
8	Steel Utility Building/Metal/Pole PP#9	31 x 52	1612 SF	1975
9	Steel Utility Building/Metal/Steel PP#1	116 x 112	12992 SF	1975



22984 HWY 6, WESTFAIR ASSN

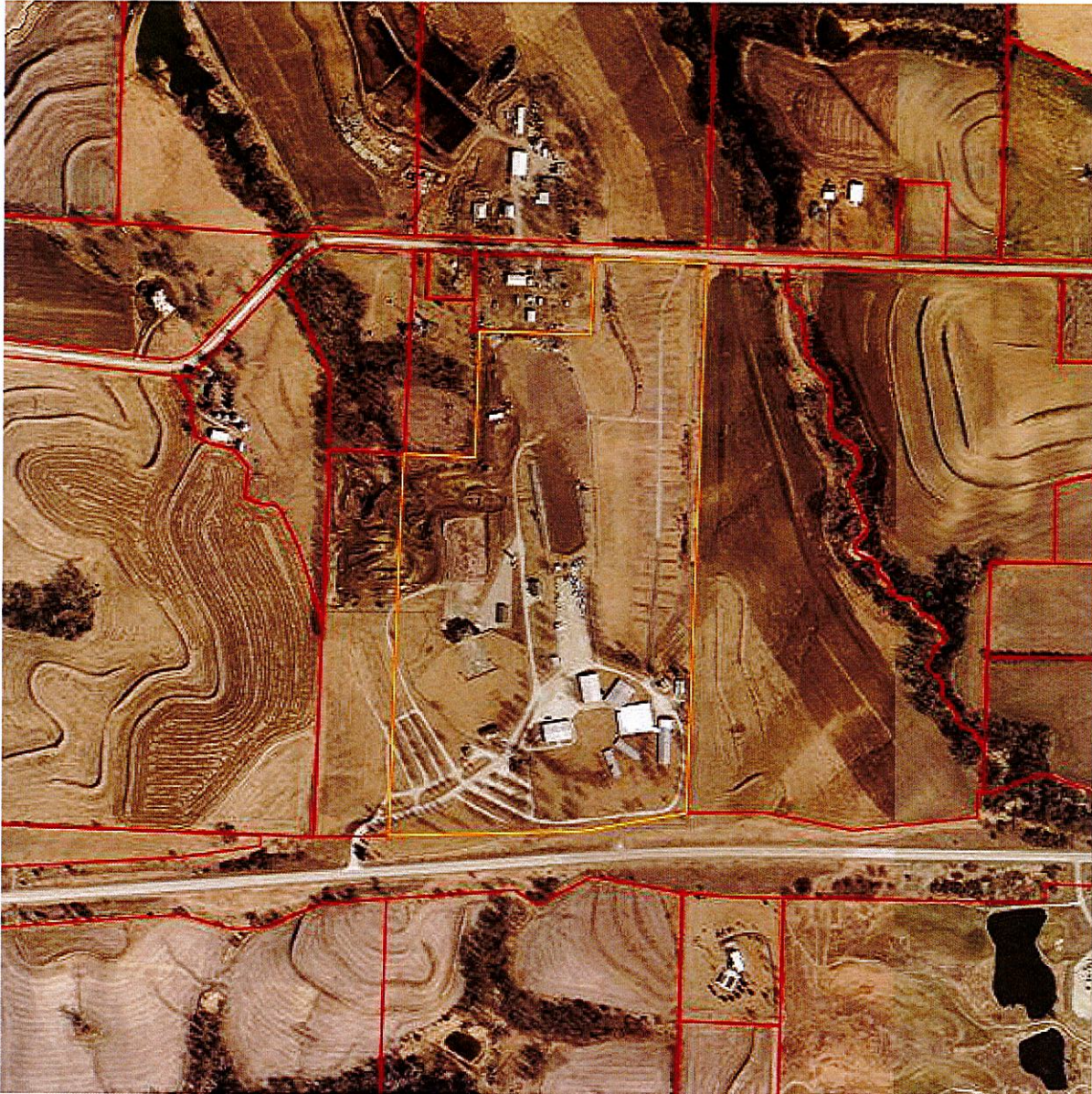


22984 HWY 6, WESTFAIR ASSN



22984 HWY 6, WESTFAIR ASSN, 1 01/07/2019

[Zoom Out](#) [Zoom In](#)



4800ft x 4800ft

[Click any parcel to go to its web page](#)

Spring 2022 aerial

See [more maps](#) at the [County GIS Department](#).

As of:

[Find Property](#) [Res Sales](#) [Comm/Ind Sales](#)

Scheduled Sessions

John Rasmussen/County Engineer

Discussion and/or decision to approve and authorize the Chairman to sign Secondary Roads Budget and County Five Year Program for Department of Transportation submittal.

Iowa Department of Transportation
SECONDARY ROADS BUDGET

County: **Pottawattamie County**
Fiscal Year: **2024**
Version: **Original**

COUNTY CERTIFICATION

This Secondary Road Budget was adopted by the Board of Supervisors on

_____ Date

ATTESTED

County Auditor

_____ Date

County Engineer

_____ Date

Chairperson, Board of Supervisors

_____ Date

IOWA DOT BUDGET APPROVALS

Recommended Approval: _____

OLS Reviewer

_____ Date

Approval: _____

Director of Local Systems

_____ Date

SECONDARY ROADS BUDGET

		Actual Receipts Prior Years		Estimated Receipts	
		2 nd Prior	1 st Prior	Current	Next
		FY 2021	FY 2022	FY 2023	FY 2024
1. County Auditor's Beginning Balance		\$6,626,159.43	\$5,340,874.67	\$8,017,078.88	\$5,596,190.88
Receipts from Property Tax Levies	2.69760 Dollars on all taxable property in county except on property within cities and towns. (Max. \$3.00375)	\$5,100,000.00	\$5,215,000.00	\$5,415,582.00	\$5,617,726.00
	0.02000 Dollars on all taxable property in the county. (Max. \$0.16875)				
2A. Local Option Sales Tax		\$2,450,000.00	\$2,750,000.00	\$3,000,000.00	\$3,000,000.00
3. Regular Road Use Tax Received	(Doesn't include transfer of local R.U.T. to FM account for const. on FM routes)	\$7,473,187.92	\$7,382,042.16	\$6,780,000.00	\$6,972,501.00
3b. Amount for 306.4(a3)	(Senate File 451 - FM Ext. in City <=500)	\$18,249.64	\$17,356.52	\$17,000.00	\$18,492.00
3c. Time 21		\$1,060,675.74	\$915,419.08	\$857,000.00	\$851,459.00
4. RISE Funds		\$0.00	\$456,943.46	\$0.00	\$0.00
5. FA Bridge Replacement Funds		\$0.00	\$0.00	\$0.00	\$0.00
5a. SWAP Bridge Replacement Funds		\$0.00	\$0.00	\$0.00	\$0.00
6. Proposed transfer of FM funds to Local Secondary Fund.(Section 309.10)		\$0.00	\$0.00	\$0.00	\$0.00
7.Tax Refunds (-) and/or Credits (+).(Section 309.10 - Code of Iowa)		\$0.00	\$0.00	\$0.00	\$0.00
8. Miscellaneous Receipts <i>Donations, sale of used materials, Special Assessments, etc</i> <i>Itemized for 2024</i>	ENTRANCE PERMITS			\$10,000.00	\$10,000.00
	MATERIALS-SCRAP			\$15,000.00	\$15,000.00
	MISC. REFUNDS- PARTS CREDITS			\$1,200.00	\$1,200.00
	TRIP PERMITS			\$10,000.00	\$10,000.00
	UTILITY PERMITS			\$10,000.00	\$10,000.00
	All Other	\$739,873.47	\$1,333,862.17	\$1,000.00	
9. Total Miscellaneous Receipts		\$739,873.47	\$1,333,862.17	\$47,200.00	\$46,200.00
10. TOTAL RECEIPTS		\$23,468,146.20	\$23,411,498.06	\$24,133,860.88	\$22,102,568.88
11. Road Use Tax Funds or other local funds not transferred to Secondary Roads to be transferred to FM fund for construction.		0	0	\$0.00	\$0.00

SECONDARY ROADS BUDGET

	Actual Expenditures Prior Years		Estimated Expenditures	
	Prior 2	Prior 1	Current	Next
	FY 2021	FY 2022	FY 2023	FY 2024
70X * Administration and Engineering				
700 Administration Expenditures	\$793,112.17	\$634,110.88	\$700,480.00	\$549,875.00
701 Engineering Expenditures	\$802,351.63	\$763,673.46	\$949,039.00	\$955,792.00
TOTAL ADMINISTRATION AND ENGINEERING	\$1,595,463.80	\$1,397,784.34	\$1,649,519.00	\$1,505,667.00
020* Construction				
Adjusted Construction Program Expenditures (300) on FM and Local Sec. Roads <i>(With other than FM funds ---See Accomplishment Year projects)</i>	\$2,269,025.01	\$478,107.68	\$1,525,000.00	\$1,025,000.00
71X* Roadway Maintenance				
710 Bridges and Culverts (420, 430)	\$1,318,805.56	\$1,330,847.80	\$1,921,953.00	\$2,140,550.00
711 Roads (4250, 460, 480)	\$8,699,264.30	\$7,533,389.01	\$8,489,298.00	\$8,921,300.00
712 Snow and Ice Control (520)	\$251,560.10	\$98,367.64	\$265,000.00	\$265,000.00
713 Traffic Controls (590)	\$480,345.87	\$366,980.10	\$495,714.00	\$532,680.00
714 Road Clearing (490)	\$79,925.47	\$71,647.45	\$90,000.00	\$90,000.00
TOTAL ROADWAY MAINTENANCE	\$10,829,901.30	\$9,401,232.00	\$11,261,965.00	\$11,949,530.00
72X * General Roadway				
720 New Equipment (610)	\$1,492,685.69	\$1,152,893.22	\$1,550,000.00	\$1,550,000.00
721 Equipment Operations (620, 630, 650)	\$1,550,075.89	\$1,839,548.20	\$2,070,186.00	\$2,891,250.00
722 Tools, Materials and Supplies (655, 660, 670, 680, 690)	\$11,123.86	\$38,772.61	\$81,000.00	\$79,000.00
723 Real Estate and Buildings (800)	\$378,995.98	\$1,086,081.13	\$400,000.00	\$500,000.00
TOTAL GENERAL ROADWAY	\$3,432,881.42	\$4,117,295.16	\$4,101,186.00	\$5,020,250.00
TOTAL EXPENDITURES (70X + 020 + 71X + 72X)	\$18,127,271.53	\$15,394,419.18	\$18,537,670.00	\$19,500,447.00
County Auditor's balance at end of fiscal year	\$5,340,874.67	\$8,017,078.88	\$5,596,190.88	\$2,602,121.88
TOTAL (Must equal receipts) [Does not include transfer of Road Use Tax to FM Fund]	\$23,468,146.20	\$23,411,498.06	\$24,133,860.88	\$22,102,568.88

SECONDARY ROADS FIVE YEAR PROGRAM

Iowa Department of Transportation
SECONDARY ROADS FIVE YEAR PROGRAM

County: **Pottawattamie County**
Fiscal Year: **2024**
Version: **Original**

COUNTY CERTIFICATION

The detailed construction program for the secondary road system was adopted by the Board of Supervisors on _____

Date

ATTESTED

County Auditor

Date

County Engineer

Date

Chairperson, Board of Supervisors

Date

IOWA DOT PROGRAM APPROVALS

Recommended Approval: _____

OLS Reviewer

Date

Approval: _____

Director of Local Systems

Date

Generated on 4/6/2023 11:54 AM

SECONDARY ROADS FIVE YEAR PROGRAM

						Accomp Year	Priority Years				Total
							1st	2nd	3rd	4th	
Project Number Project Name Project ID	Location Description of Work Section / Township / Range	AADT Length Federal ID	Status FM Transfer	Day Labor Type of Work Project Type	Fund	FY 2024	FY 2025	FY 2026	FY 2027	FY 2028	
ILL-C078()-92-78 Norwalk 15 Bridge / G30 Reconstruction 47266	On MAGNOLIA RD, Over Mosquito Creek, from 260TH E 1 mile Magnolia Road West of Railroad Highway is included in the project limits to allow for intersection improvements at RR Hwy as needed. Unfortunately the "tie in" point of this project may be on a local road; which creates a conflict with the Road Classification. Project includes the new roadway pavement, as well as the Norwalk 15 Bridge replacement. 21 / 76 / 42	25 0.930 miles 45320	Previous	\$0 320 Bridges Special	Local	200					\$5,500
					FM	400					
					Special	4,400					
					FA						
					SWAP	500					
L-DLB(GR12)--73-78 Grove 12 Bridge Replacement 36163	On 432ND ST, Over JORDAN CREEK, S17 T74 R39 SD, SR=27. Proposed 140' 17 / 74 / 39	15 0.000 miles 283770	Previous	\$80 320 Bridges Local	Local	320					\$320
					FM						
					Special						
					FA						
					SWAP						
LFM-DLB(RO06)--7X-78 Rockford 6 Bridge Replacement 45181	On L 19, Over DRAINAGE DITCH, S9 T77 R44 SD, SR=44, Proposed 46' Precast 9 / 77 / 44	40 0.000 miles 45010	Previous	\$40 320 Bridges Local	Local	190					\$190
					FM						
					Special						
					FA						
					SWAP						
LFM-DLB(LY10)--7X-78 Layton 10 Bridge Replacement 51168	On TRUMAN AVE, Over WALNUT CREEK, S14 T77 R38 Proposed 100', SD, SR=50 14 / 77 / 38	33 0.000 miles 289420	Previous	\$80 320 Bridges Local	Local	260					\$260
					FM						
					Special						
					FA						
					SWAP						

SECONDARY ROADS FIVE YEAR PROGRAM

SECONDARY ROADS FIVE YEAR PROGRAM

						Accomp Year	Priority Years				Total
							1st	2nd	3rd	4th	
Project Number Project Name Project ID	Location Description of Work Section / Township / Range	AADT Length Federal ID	Status FM Transfer	Day Labor Type of Work Project Type	Fund	FY 2024	FY 2025	FY 2026	FY 2027	FY 2028	
L-DLB(LY21)--73-78 Layton 21 Bridge Replacement 36168	On 510TH ST, Over STREAM, on WLINE S3 T77 R38 SD, Level B 3 / 77 / 38	5 0.000 miles 363510	Previous	\$100 320 Bridges Local	Local	100					\$100
					FM						
					Special						
					FA						
					SWAP						
L-DLB(WV12)--73-78 Waveland 12 Bridge Replacement 51156	On CHESTNUT RD, Over INDIAN CREEK, S17 T74 R38 Proposed 60', SD, SR=33 17 / 74 / 38	28 0.000 miles 283431	Previous	\$60 320 Bridges Local	Local	220					\$220
					FM						
					Special						
					FA						
					SWAP						
BROS-C078(177)--8J-78 Boomer 19 Bridge Replacement 18229	On 210TH ST, Over PIGEON CREEK, S27 T77 R43 SD, SR=38, Replace 143' Bridge 27 / 77 / 43	40 0.000 miles 290830	Previous	\$0 320 Bridges FA	Local						\$1,800
					FM						
					Special						
					FA		1,800				
					SWAP						
L-DLB(HD23)--73-78 Hazel Dell 23 Bridge Replacement 51163	On MAGNOLIA RD, Over STREAM, S20 T76 R43 Propose 60', SD, SR=44 20 / 76 / 43	10 0.000 miles 361970	Previous	\$60 320 Bridges Local	Local		200				\$200
					FM						
					Special						
					FA						
					SWAP						

SECONDARY ROADS FIVE YEAR PROGRAM

						Accomp Year	Priority Years				Total
							1st	2nd	3rd	4th	
Project Number Project Name Project ID	Location Description of Work Section / Township / Range	AADT Length Federal ID	Status FM Transfer	Day Labor Type of Work Project Type	Fund	FY 2024	FY 2025	FY 2026	FY 2027	FY 2028	
L-DLB(LY15)--73-78 Layton 15 Bridge Replacement 51164	On SUMAC RD, Over STREAM, S31 T77 R38 Proposed 60', SD, SR=47 31 / 77 / 38	10 0.000 miles 289481	Previous	\$60 320 Bridges Local	Local		200				\$200
					FM						
					Special						
					FA						
LFM-DLB(SC31)--7X-78 Silver Creek 31 Bridge Replacement 53420	On L 66, Over MUD CREEK, S36 T74 R41 36 / 74 / 41	20 0.000 miles 284631	New	\$90 320 Bridges Local	Local		230				\$230
					FM						
					Special						
					FA						
FM-C078(--55-78 M47 Resurfacing 47267	On M47, from Highway 92 N 6 miles to Highway 6	5 5.940 miles	Previous	\$0 366 HMA Paving FM	Local						\$2,100
					FM			2,100			
					Special						
					FA						
BRS-C078(--60-78 Tamarack Road Overpass 13048	On G 18, Over BNSF RR, S19 T77 R41 Removal of bridge, replacement with at grade railroad crossing 19 / 77 / 41	10 0.000 miles 43580	Previous	\$0 320 Bridges FA	Local						\$2,000
					FM						
					Special						
					FA			1,600			
					SWAP			400			

SECONDARY ROADS FIVE YEAR PROGRAM

						Accomp Year	Priority Years				Total
							1st	2nd	3rd	4th	
Project Number Project Name Project ID	Location Description of Work Section / Township / Range	AADT Length Federal ID	Status FM Transfer	Day Labor Type of Work Project Type	Fund	FY 2024	FY 2025	FY 2026	FY 2027	FY 2028	
L-DLB(MA10)--73-78 Macedonia 10 Bridge Replacement 36182	On BOSTON AVE, Over GRAYBILL CREEK, S24 T74 R40 SD, SR=35, Proposed 140' single span 24 / 74 / 40	25 0.000 miles 284190	Previous	\$80 320 Bridges Local	Local			310			\$310
					FM						
					Special						
					FA						
					SWAP						
L-DLB(CE23)--73-78 Center 23 Bridge Replacement 51169	On 470TH ST, Over JORDAN CREEK, S24 T75 R39 SD, SR=49 24 / 75 / 39	24 0.000 miles 285510	Previous	\$80 320 Bridges Local	Local			240			\$240
					FM						
					Special						
					FA						
					SWAP						
L-DLB(NE17)--73-78 Neola 17 Bridge Replacement 53421	On TEAKWOOD RD, Over NEOLA CREEK, S24 T77 R42 24 / 77 / 42	61 0.000 miles 290400	New	\$90 320 Bridges Local	Local			230			\$230
					FM						
					Special						
					FA						
					SWAP						
L-DLB(WV02)--73-78 Waveland 02 Bridge Replacement 53423	On COTTONWOOD RD, Over DRAINAGE, S4 T74 R38 4 / 74 / 38	11 0.000 miles 283332	New	\$70 320 Bridges Local	Local				210		\$210
					FM						
					Special						
					FA						
					SWAP						

SECONDARY ROADS FIVE YEAR PROGRAM

						Accomp Year	Priority Years				Total
							1st	2nd	3rd	4th	
Project Number Project Name Project ID	Location Description of Work Section / Township / Range	AADT Length Federal ID	Status FM Transfer	Day Labor Type of Work Project Type	Fund	FY 2024	FY 2025	FY 2026	FY 2027	FY 2028	
L-DLB(CE21)--73-78 Center 21 Bridge Replacement 51170	On EDISON LN, Over JORDAN CREEK, S23 T75 R39 SD, SR=52 23 / 75 / 39	5 0.000 miles 285491	Previous	\$80 320 Bridges Local	Local				220		\$220
					FM						
					Special						
					FA						
					SWAP						
L-DLB(WR01)--73-78 Wright 1 Bridge Replacement 32551	On IDLEWOOD RD, Over WALNUT CREEK, S3 T75 R38 SD, SR=33, proposed 160' 3 span 3 / 75 / 38	10 0.000 miles 285011	Previous	\$80 320 Bridges Local	Local				300		\$300
					FM						
					Special						
					FA						
					SWAP						
STP-S-C078()-5E-78 G30 Resurfacing 32566	On MAGNOLIA RD (G30), from 265th Street (L52) E 8 miles to 340th Street (L66)	5 7.540 miles 45320	Previous	\$0 366 HMA Paving FA	Local						\$1,925
					FM			1,600			
					Special						
					FA			325			
					SWAP						
ILL-C078()-92-78 Old Mormon Bridge Road Reconstruction 53326	On OLD MORMON BRG RD (G37), from I29 E to OLD LINCOLN HIGHWAY (L20) IIJA Candidate Programming 23 / 76 / 44	47 2.100 miles	New	\$0 367 PCC Paving Special	Local						\$3,000
					FM						
					Special				3,000		
					FA						
					SWAP						

SECONDARY ROADS FIVE YEAR PROGRAM

						Accomp Year	Priority Years				Total
							1st	2nd	3rd	4th	
Project Number Project Name Project ID	Location Description of Work Section / Township / Range	AADT Length Federal ID	Status FM Transfer	Day Labor Type of Work Project Type	Fund	FY 2024	FY 2025	FY 2026	FY 2027	FY 2028	
ILL-C078()-92-78 Wabash Road Reconstruction 53327	On L 35, from Mills County N to Council Bluffs Corporate Limits IIJA Candidate Programming 15 / 74 / 43	19 5.400 miles	New	\$0 366 HMA Paving Special	Local						\$7,500
					FM						
					Special				7,500		
					FA						
					SWAP						
ILL-C078()-92-78 192nd Street Grade and Pave 53330	On L 31, from Bunge Avenue (H10) N to Harry Langdon BLVD IIJA Candidate Programming. The project boundaries are correct, but there are multiple jurisdictions involved complicating the Federal Functional class to be identified. 32 / 74 / 43	41 7.300 miles	New	\$0 352 Excavation Special	Local					400	\$10,000
					FM						
					Special				9,600		
					FA						
					SWAP						
ILL-C078()-92-78 Tamarack Road Reconstruction 53336	On Tamarack Road (G18), from Railroad Highway (G8L) E to Highway 59 IIJA Candidate Programming 12 / 77 / 40	5 14.300 miles	New	\$0 366 HMA Paving Special	Local						\$20,000
					FM						
					Special				20,000		
					FA						
					SWAP						
STP-S-C078()-5E-78 L34 Reconstruction 53380	On L 34, from 750' South of G30 N to Potato Creek Bridge 26 / 77 / 43	26 4.800 miles	New	\$0 366 HMA Paving FA	Local						\$4,500
					FM				900		
					Special						
					FA				3,600		
					SWAP						

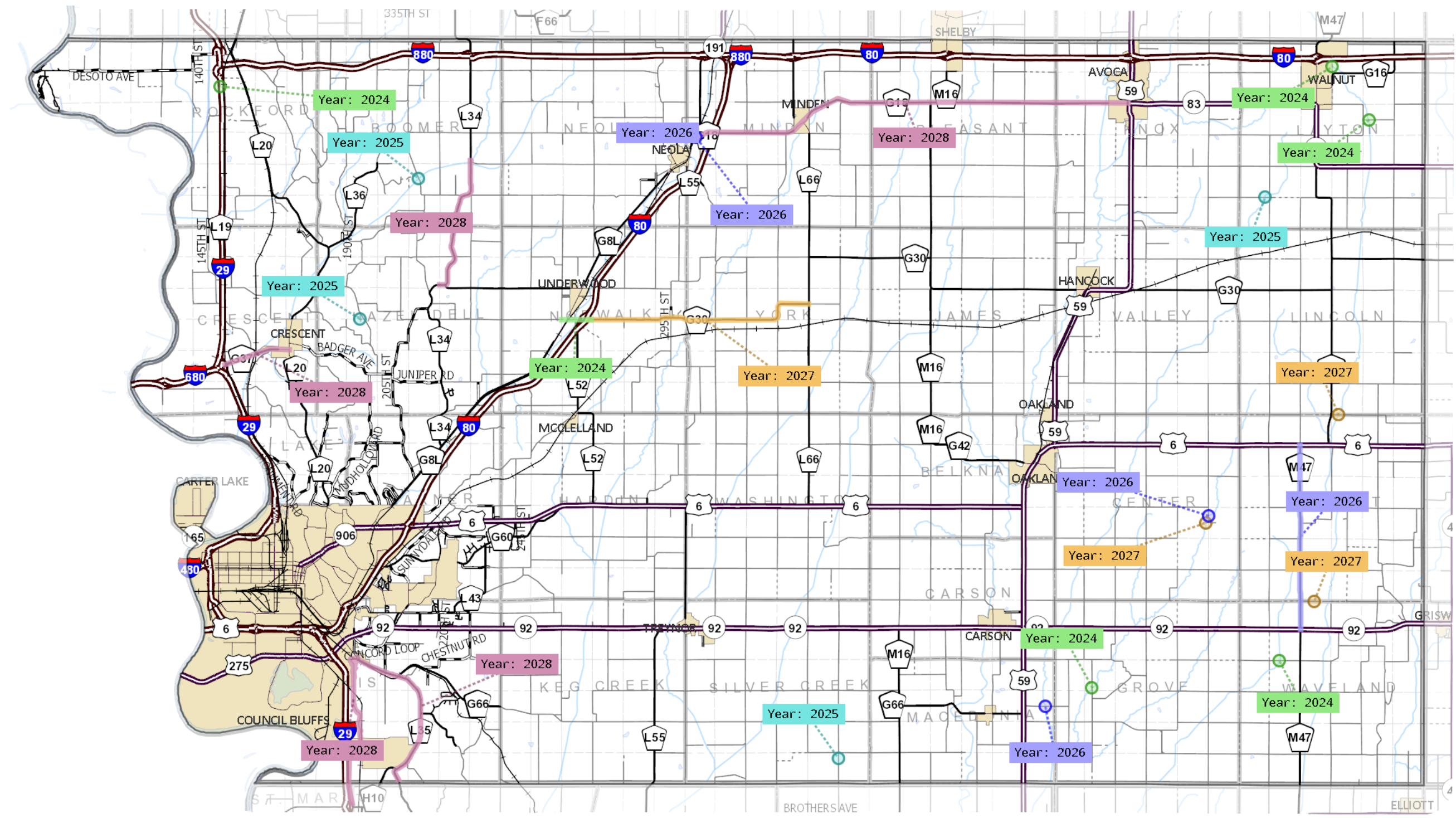
SECONDARY ROADS FIVE YEAR PROGRAM

Paving Point Computations

Local or FM Route	Project Number	Location	Type of Work	Year	Road Type	AADT	Pavement Proximity	Trucks	Bonus	Total
Local	ILL-C078()--92-78	On L 31, from Bunge Avenue (H10) N to Harry Langdon BLVD	352 Excavation	2028	15	40	0	15	0	70

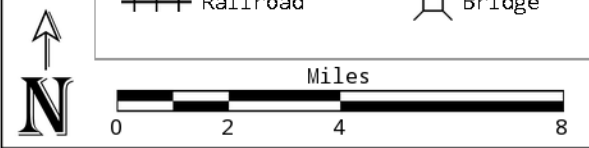
SECONDARY ROADS FIVE YEAR PROGRAM

Fund	2024	2025	2026	2027	2028
SWAP	\$500,000	\$0	\$400,000	\$0	\$0
FM	\$400,000	\$0	\$2,100,000	\$1,600,000	\$900,000
Local	\$1,290,000	\$630,000	\$780,000	\$730,000	\$400,000
FA	\$0	\$1,800,000	\$1,600,000	\$325,000	\$3,600,000
Special	\$4,400,000	\$0	\$0	\$0	\$40,100,000



Feature Key

Earth	Gravel	Seal Coat	County Pavement	State Pavement	Divided Hwy	Water	City	Township
Railroad	Bridge	County Hwy	State Hwy	US Hwy				



John Rasmussen/County Engineer

**Discussion and/or decision to approve and
authorize the Chairman to sign the Final
Voucher for project STBG-SWAP-CO78(205) -
- FG-78 for M47 resurfacing.**

Contract 038494



Iowa Department of Transportation
CONTRACT CONSTRUCTION PROGRESS VOUCHER

STBG-SWAP-C078(205)--FG-78
 HMA Resurfacing
 POTTAWATTAMIE COUNTY ENGINEER

Voucher No. 8 *Final*

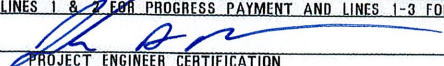
DATE LAST VOUCHER 10-20-22
 MO. DAY YR.

THIS VOUCHER
 MO. DAY YR.

DAYS WORKED			RET. %	Contractor No. 48600 WESTERN ENGINEERING CO INC HARLAN, IA									
TO DATE	LAST VOUCH.	AUTH.		ITEM NO.	QUANTITY AWARDED	QUANTITY AUTHORIZED	UNIT OF MEASURE	FCT.		RURAL PARTICIPATING	RURAL NON-PARTICIPATING	URBAN PARTICIPATING	URBAN NON-PARTICIPATING
<u>59.0</u>	<u>0.0</u>	<u>60.0</u>	<u>3.000</u>										
ITEM DESCRIPTION													
0010	<u>544.400</u>	<u>544.400</u>	Cubic Yd	<u>410</u>	Compl. Last Voucher				<u>000</u>	<u>544400</u>	<u>000</u>	<u>000</u>	
EMBAKMENT-IN-PLACE													
TOTAL TO DATE													
0020	<u>913.000</u>	<u>913.000</u>	Cubic Yd	<u>410</u>	Compl. Last Voucher				<u>000</u>	<u>913000</u>	<u>000</u>	<u>000</u>	
TOPSOIL, STRIP, SALVAGE+SPREAD													
TOTAL TO DATE													
0030	<u>180.300</u>	<u>180.300</u>	Cubic Yd	<u>410</u>	Compl. Last Voucher				<u>000</u>	<u>180300</u>	<u>000</u>	<u>000</u>	
COMPACT BACKFILL ADJ TO BRDG/CULV/STRUC T													
TOTAL TO DATE													
0040	<u>2813.600</u>	<u>2813.600</u>	Ton	<u>410</u>	Compl. Last Voucher				<u>000</u>	<u>4137640</u>	<u>000</u>	<u>000</u>	
GRANULAR SHLD, TYPE B													
TOTAL TO DATE													
0050	<u>4.900</u>	<u>4.900</u>	Miles	<u>441</u>	Compl. Last Voucher				<u>000</u>	<u>4900</u>	<u>000</u>	<u>000</u>	
CLEAN+PREPARATION OF BASE													
TOTAL TO DATE													
0060	<u>61476.000</u>	<u>61476.000</u>	Sq Yard	<u>441</u>	Compl. Last Voucher				<u>000</u>	<u>61476000</u>	<u>000</u>	<u>000</u>	
PAV'T, SCARIFICATION													
TOTAL TO DATE													
0070	<u>3747.840</u>	<u>3747.840</u>	Ton	<u>442</u>	Compl. Last Voucher				<u>000</u>	<u>3833160</u>	<u>000</u>	<u>000</u>	
HMA INTERLAYER BASE, 3/8"													
TOTAL TO DATE													
0080	<u>7062.340</u>	<u>7062.340</u>	Ton	<u>442</u>	Compl. Last Voucher				<u>000</u>	<u>6870330</u>	<u>000</u>	<u>000</u>	
HMA ST SURF, 1/2", NO FRIC													
TOTAL TO DATE													
0090	<u>423.740</u>	<u>423.740</u>	Ton	<u>442</u>	Compl. Last Voucher				<u>000</u>	<u>377530</u>	<u>000</u>	<u>000</u>	
ASPH BINDER, PG 58-28S													
TOTAL TO DATE													

I certify that the work items shown herein are just and unpaid, and that the requirements of the Iowa Department of Transportation specifications for this project, including all requirements as to maximum hours of labor and minimum wages have been complied with.

SIGNATURES REQUIRED ON LINES 1 & 2 FOR PROGRESS PAYMENT AND LINES 1-3 FOR FINAL PAYMENT AS APPLICABLE.

- 4/6/23 
 DATE PROJECT ENGINEER CERTIFICATION
- DATE CHAIRMAN OF BOARD OF SUPERVISORS APPROVAL
 IDOT is not involved in this Farm to Market project.
- DATE DISTRICT CONSTRUCTION/LOCAL SYSTEMS ENGINEER OR OFFICE DIRECTOR APPROVAL
 Project records reviewed. Project records not reviewed. Recommend payment
 Project approved for payment based on the project engineers certification.

CERTIFICATION FOR HOURS AND LABOR APPLIES ONLY TO FEDERAL PARTICIPATING PROJECT.

CLAIMANT'S CERTIFICATION (Required for Final Payment Only)

I, _____ the _____

for _____ (contractor) certify that the work items shown herein are just and unpaid, and that the requirements of the Iowa Department of Transportation specifications for this project, including all requirements as to maximum hours of labor and minimum wages have been complied with.

DATE SIGNED CLAIMANT (CONTRACTOR)

490

Contract 038494



Iowa Department of Transportation
CONTRACT CONSTRUCTION PROGRESS VOUCHER

STBG-SWAP-C078(205)--FG-78 PAGE 2
 HMA Resurfacing
 POTTAWATTAMIE COUNTY ENGINEER

Voucher No. 8 *Final*

DATE LAST VOUCHER 10-20-22
 MO. DAY YR.

THIS VOUCHER - - - -
 MO. DAY YR.

DAYS WORKED			RET. %	Contractor No. 48600 WESTERN ENGINEERING CO INC HARLAN, IA										
TO DATE	LAST VOUCH.	AUTH.		ITEM NO.	QUANTITY AWARDED	QUANTITY AUTHORIZED	UNIT OF MEASURE	FCT.	Compl. Last Voucher	TOTAL TO DATE	RURAL PARTICIPATING	RURAL NON-PARTICIPATING	URBAN PARTICIPATING	URBAN NON-PARTICIPATING
<u>59.0</u>	<u>0.0</u>	<u>60.0</u>	<u>3.000</u>											
				ITEM DESCRIPTION										
0100	299.830	299.830	Ton	442						000	273870	000	000	
ASPH BINDER, PG 58-34E														
0110	4500.000	4500.000	Lump Sum	442						000	4500000	000	000	
HMA PAV'T SAMPLE														
0120	3382.000	3382.000	Each	442						000	13809360	000	000	
PAY ADJ I/D-HMA MIXTURE LABORATORY VOIDS														
0130	3382.000	3382.000	Each	442						000	14098780	000	000	
PAY ADJ I/D-HMA MIXTURE FIELD VOIDS														
0140	2.000	2.000	Each	442						000	2000	000	000	
RUMBLE STRIP PANEL (HMA SURF)														
0150	14581.000	14581.000	Each	444						000	4475000	000	000	
PAY ADJ I/D-HMA PAV'T SMOOTHNESS														
0160	50.100	50.100	Cubic Yd	430						000	50100	000	000	
EXCAVATION, CL 20, RDWY PIPE CULV														
0170	18.000	18.000	Each	420						000	18000	000	000	
APRON, SAFETY SLOPE, 18"														
0180	9.000	9.000	Each	420						000	9000	000	000	
APRON, SAFETY SLOPE, 24"														

I certify that the work items shown herein are just and unpaid, and that the requirements of the Iowa Department of Transportation specifications for this project, including all requirements as to maximum hours of labor and minimum wages have been complied with.

SIGNATURES REQUIRED ON LINES 1 & 2 FOR PROGRESS PAYMENT AND LINES 1-3 FOR FINAL PAYMENT AS APPLICABLE.

- DATE 4/6/23 PROJECT ENGINEER CERTIFICATION [Signature]
- DATE _____ CHAIRMAN OF BOARD OF SUPERVISORS APPROVAL
 IDOT is not involved in this Farm to Market project.
- DATE _____ DISTRICT CONSTRUCTION/LOCAL SYSTEMS ENGINEER OR OFFICE DIRECTOR APPROVAL
 Project records reviewed. Project records not reviewed. Recommend payment based on the project engineers certification.

CERTIFICATION FOR HOURS AND LABOR APPLIES ONLY TO FEDERAL PARTICIPATING PROJECT.

CLAIMANT'S CERTIFICATION (Required for Final Payment Only)

I, _____ the _____

for _____ (contractor) certify that the work items shown herein are just and unpaid, and that the requirements of the Iowa Department of Transportation specifications for this project, including all requirements as to maximum hours of labor and minimum wages have been complied with.

DATE _____ SIGNED CLAIMANT (CONTRACTOR) _____

AAA

Contract 038494



Iowa Department of Transportation
CONTRACT CONSTRUCTION PROGRESS VOUCHER

STBG-SWAP-C078(205)--FG-78
 HMA Resurfacing
 POTTAWATTAMIE COUNTY ENGINEER

Voucher No. 8 *Final*

DATE LAST VOUCHER 10-20-22
 MO. DAY YR.

THIS VOUCHER - - -
 MO. DAY YR.

DAYS WORKED			RET. %
TO DATE	LAST VOUCH.	AUTH.	
<u>52.0</u>	<u>0.0</u>	<u>60.0</u>	<u>3.000</u>

Contractor No. 48600 WESTERN ENGINEERING CO INC HARLAN, IA

ITEM NO.	QUANTITY AWARDED	QUANTITY AUTHORIZED	UNIT OF MEASURE	FCT.	Compl. Last Voucher	RURAL PARTICIPATING		RURAL NON-PARTICIPATING		URBAN PARTICIPATING		URBAN NON-PARTICIPATING	
	ITEM DESCRIPTION												
0190	<u>2.000</u>	<u>2.000</u>	Each	<u>420</u>			<u>000</u>	<u>2000</u>		<u>000</u>		<u>000</u>	
	APRON, SAFETY SLOPE, 42"				TOTAL TO DATE								
0200	<u>2.000</u>	<u>2.000</u>	Each	<u>420</u>			<u>000</u>	<u>2000</u>		<u>000</u>		<u>000</u>	
	APRON, SAFETY SLOPE, 48"				TOTAL TO DATE								
0210	<u>410.000</u>	<u>410.000</u>	Linr Ft	<u>420</u>			<u>000</u>	<u>410000</u>		<u>000</u>		<u>000</u>	
	CULV, CMP ENT, 18"				TOTAL TO DATE								
0220	<u>138.000</u>	<u>138.000</u>	Linr Ft	<u>420</u>			<u>000</u>	<u>138000</u>		<u>000</u>		<u>000</u>	
	CULV, CMP ENT, 24"				TOTAL TO DATE								
0230	<u>2.000</u>	<u>2.000</u>	Linr Ft	<u>420</u>			<u>000</u>	<u>198 000</u>		<u>000</u>		<u>000</u>	
	CULV, CMP ENT, 42"				TOTAL TO DATE								
0240	<u>60.000</u>	<u>60.000</u>	Linr Ft	<u>420</u>			<u>000</u>	<u>60000</u>		<u>000</u>		<u>000</u>	
	CULV, CMP ENT, 48"				TOTAL TO DATE								
0250	<u>30.000</u>	<u>30.000</u>	Linr Ft	<u>420</u>			<u>000</u>	<u>30000</u>		<u>000</u>		<u>000</u>	
	CULV, CMP RDWY, 24"				TOTAL TO DATE								
0260	<u>1188.110</u>	<u>1188.110</u>	Station	<u>442</u>			<u>000</u>	<u>1188110</u>		<u>000</u>		<u>000</u>	
	PAINTED PAV'T MARK, WATERBORNE/SOLVENT				TOTAL TO DATE								
0270	<u>4500.000</u>	<u>4500.000</u>	Lump Sum	<u>401</u>			<u>000</u>	<u>4500000</u>		<u>000</u>		<u>000</u>	
	TRAFFIC CONTROL				TOTAL TO DATE								

I certify that the work items shown herein are just and unpaid, and that the requirements of the Iowa Department of Transportation specifications for this project, including all requirements as to maximum hours of labor and minimum wages have been complied with.

SIGNATURES REQUIRED ON LINES 1 & 2 FOR PROGRESS PAYMENT AND LINES 1-3 FOR FINAL PAYMENT AS APPLICABLE.

1. 4/6/23 [Signature]
 DATE PROJECT ENGINEER CERTIFICATION

2. _____
 DATE CHAIRMAN OF BOARD OF SUPERVISORS APPROVAL
 IDOT is not involved in this Farm to Market project.

3. _____
 DATE DISTRICT CONSTRUCTION/LOCAL SYSTEMS ENGINEER OR OFFICE DIRECTOR APPROVAL
 Project records reviewed. Project records not reviewed. Recommend payment
 Project approved for payment. based on the project engineers certification.

CLAIMANT'S CERTIFICATION (Required for Final Payment Only)

I, _____ the _____
 for _____ (contractor) certify that the work items shown herein are just and unpaid, and that the requirements of the Iowa Department of Transportation specifications for this project, including all requirements as to maximum hours of labor and minimum wages have been complied with.

 DATE SIGNED CLAIMANT (CONTRACTOR)

440

CERTIFICATION FOR HOURS AND LABOR APPLIES ONLY TO FEDERAL PARTICIPATING PROJECT.

Contract 038494



Iowa Department of Transportation
CONTRACT CONSTRUCTION PROGRESS VOUCHER

STBG-SWAP-C078(205)--FG-78
 HMA Resurfacing
 POTTAWATTAMIE COUNTY ENGINEER

Voucher No. 8 *Final*

DATE LAST VOUCHER 10-20-22
 MO. DAY YR.

THIS VOUCHER - -
 MO. DAY YR.

DAYS WORKED			RET. %
TO DATE	LAST VOUCH.	AUTH.	
59.0	0.0	60.0	3.000

Contractor No. 48600 WESTERN ENGINEERING CO INC HARLAN, IA

ITEM NO.	QUANTITY AWARDED	QUANTITY AUTHORIZED	UNIT OF MEASURE	FCT.	Compl. Last Voucher	RURAL PARTICIPATING		RURAL NON-PARTICIPATING		URBAN PARTICIPATING		URBAN NON-PARTICIPATING	
						TOTAL TO DATE		TOTAL TO DATE		TOTAL TO DATE		TOTAL TO DATE	
0280	280.000	89.000	Each	401		000		89000		000		000	
FLAGGER													
0290	70.000	70.000	Each	401		000		29000		000		000	
PILOT CAR													
0300	1887.100	1887.100	Sq Yard	442		000		1719810		000		000	
PATCH, FULL-DEPTH FINISH, BY AREA													
0310	358.000	358.000	Each	442		000		282000		000		000	
PATCH, FULL-DEPTH FINISH, BY COUNT													
0320	50000.000	50000.000	Lump Sum	401		000		50000000		000		000	
MOBILIZATION													
0330	1.700	1.700	Acre	448		000		1700		000		000	
MULCH													
0340	1.700	1.700	Acre	448		000		1700		000		000	
SEED+FERTILIZE (RURAL)													
0350	1.700	1.700	Acre	448		000		000		000		000	
STABILIZE CROP - SEED+FERTILIZE													
0360	2680.000	2680.000	Linr Ft	448		000		1220000		000		000	
PERIMETER+SLOPE SEDIMENT CNTL DEVICE, 1 2"													

I certify that the work items shown herein are just and unpaid, and that the requirements of the Iowa Department of Transportation specifications for this project, including all requirements as to maximum hours of labor and minimum wages have been complied with.

SIGNATURES REQUIRED ON LINES 1 & 2 FOR PROGRESS PAYMENT AND LINES 1-3 FOR FINAL PAYMENT AS APPLICABLE.

- DATE 4/6/23 PROJECT ENGINEER CERTIFICATION
- DATE _____ CHAIRMAN OF BOARD OF SUPERVISORS APPROVAL
 IDOT is not involved in this Farm to Market project.
- DATE _____ DISTRICT CONSTRUCTION/LOCAL SYSTEMS ENGINEER OR OFFICE DIRECTOR APPROVAL
 Project records reviewed. Project records not reviewed. Recommend payment based on the project engineers certification.
 Project approved for payment based on the project engineers certification.

CLAIMANT'S CERTIFICATION (Required for Final Payment Only)

I, _____ the _____
 for _____ (contractor) certify that the work items shown herein are just and unpaid, and that the requirements of the Iowa Department of Transportation specifications for this project, including all requirements as to maximum hours of labor and minimum wages have been complied with.

DATE _____ SIGNED CLAIMANT (CONTRACTOR) _____

444

Contract 038494



Iowa Department of Transportation
CONTRACT CONSTRUCTION PROGRESS VOUCHER

STBG-SWAP-C078(205)--FG-78
 HMA Resurfacing
 POTTAWATTAMIE COUNTY ENGINEER

Voucher No. 8 *Final*

DATE LAST VOUCHER 10-20-22
 MO. DAY YR.

THIS VOUCHER - -
 MO. DAY YR.

DAYS WORKED			RET. %	Contractor No. 48600 WESTERN ENGINEERING CO INC HARLAN, IA																	
TO DATE	LAST VOUCH.	AUTH.		QUANTITY AWARDED	QUANTITY AUTHORIZED	UNIT OF MEASURE	FCT.	Compl. Last Voucher	RURAL PARTICIPATING	RURAL NON-PARTICIPATING	URBAN PARTICIPATING	URBAN NON-PARTICIPATING									
<u>52.0</u>	<u>0.0</u>	<u>60.0</u>	<u>3.000</u>																		
0370			2680.000	2680.000	Linr Ft	448	Compl. Last Voucher		000	000	000	000	000	000	000	000	000	000	000	000	000
							TOTAL TO DATE														
0380			3.000	3.000	Each	448	Compl. Last Voucher		000	1000	000	000	000	000	000	000	000	000	000	000	000
							TOTAL TO DATE														
0390			1.000	1.000	Each	448	Compl. Last Voucher		000	000	000	000	000	000	000	000	000	000	000	000	000
							TOTAL TO DATE														
7001			-191.000	-191.000	Each	401	Compl. Last Voucher		000	000	000	000	000	000	000	000	000	000	000	000	000
							TOTAL TO DATE														
8999			1.000	1.000	Lump Sum	401	Compl. Last Voucher		000	000	000	000	000	000	000	000	000	000	000	000	000
							TOTAL TO DATE														
							Compl. Last Voucher														
							TOTAL TO DATE														
							Compl. Last Voucher														
							TOTAL TO DATE														
							Compl. Last Voucher														
							TOTAL TO DATE														

I certify that the work items shown herein are just and unpaid, and that the requirements of the Iowa Department of Transportation specifications for this project, including all requirements as to maximum hours of labor and minimum wages have been complied with.

SIGNATURES REQUIRED ON LINES 1 & 2 FOR PROGRESS PAYMENT AND LINES 1-3 FOR FINAL PAYMENT AS APPLICABLE.

- DATE 4/6/23 PROJECT ENGINEER CERTIFICATION [Signature]
- DATE _____ CHAIRMAN OF BOARD OF SUPERVISORS APPROVAL
 IDOT is not involved in this Farm to Market project.
- DATE _____ DISTRICT CONSTRUCTION/LOCAL SYSTEMS ENGINEER OR OFFICE DIRECTOR APPROVAL
 Project records reviewed. Project records not reviewed. Recommend payment based on the project engineers certification.
 Project approved for payment.

CLAIMANT'S CERTIFICATION (Required for Final Payment Only)

I, _____ the _____

for _____ (contractor) certify that the work items shown herein are just and unpaid, and that the requirements of the Iowa Department of Transportation specifications for this project, including all requirements as to maximum hours of labor and minimum wages have been complied with.

DATE _____ SIGNED CLAIMANT (CONTRACTOR) _____

CERTIFICATION FOR HOURS AND LABOR APPLIES ONLY TO FEDERAL PARTICIPATING PROJECT.

942

**Jason Slack/Director, Buildings and Grounds and Craig
Carlsen/Manager, Public Relations**

**Discussion and/or decision on Courthouse
signage proposal from Metal Logos.**



Quote# : 29546

Submitted: 3/10/2023

SalesPerson: Deb Gorat

For: Pottawattamie County
 Attn: Jason Slack
 227 S 6th Street
 Council Bluffs, IA 51501

Project:
 Phone: 712-328-4791
 Misc:
 Email: jason.slack@pottcounty-ia.gov

Delivery:
 PO#: 29546
 Date: 2/28/2023

Item#	Description:	Qty	UnitPrice	Total
Option #1				
1	133.85"ht x 140"w interior wall display 68"ht logo - background 1/2" acrylic with flat bed printed graphics on the face - sides painted PMS _____ blue Two piece flame logo - 1/4 dibond with falt bed printed graphics on the faces - large flame piece flush mount to logo background - small flame piece projected 1/2" from the wall 12.75" cap height "Pottawattamie County" and 10.5" cap height "Fiind Your Flame" - 1/2" acrylic painted PMS _____ blue Stud mount flush to interior brick wall ** scissor lift required	1	\$7,589.75	\$7,589.75
		Install:	Special	\$1,850.00
		Delivery:		\$0.00

Option #1 Total:	\$9,439.75
-------------------------	-------------------

Option #2				
1	133.85"ht x 140"ht interior wall display 68"ht logo - background 1" acrylic with flat bed printed graphics on the face - sides painted PMS _____ blue Two piece flame logo - 1/4 dibond with falt bed printed graphics on the faces - large flame piece flush mount to logo background - small flame piece projected 1" from the wall 12.75" cap height "Pottawattamie County" and 10.5" cap height "Fiind Your Flame" - 1" acrylic painted PMS _____ blue Stud mount flush to interior brick wall ** scissor lift required	1	\$10,027.25	\$10,027.25
		Install:	Special	\$1,850.00
		Delivery:		\$0.00

Option #2 Total:	\$11,877.25
-------------------------	--------------------

Item#	Description:	Qty	UnitPrice	Total
2	46"ht x 204"w exterior wall display ABOVE FRONT ENTRANCE 40"ht logo - background 1/4" aluminum painted PMS _____ Two piece flame logo - 1/4" dibond with custom painted fade colors - large flame piece flush mount to logo background - small flame piece projected 1/4" from the wall 14.75" cap height "Pottawattamie County" - 1/4" aluminum painted PMS _____ blue Stud mount flush to interior brick wall ** bucket truck required ** city permit fee TBD	1	\$3,323.93	\$3,323.93
		Install:	Special	\$2,475.00
		Delivery:		\$0.00

Total:	\$5,798.93
---------------	-------------------

Item#	Description:	Qty	UnitPrice	Total
Option #1				
3	246.7"ht x 200"w exterior wall display SIDE OF BUILDING 164.7"ht logo - background 3/8" aluminum painted PMS _____ blue ** logo background to have fabrication breaks due to material sizes Two piece flame logo - 1/4" dibond with custom painted fade colors - large flame piece flush mount to logo background - small flame piece projected 3/8" from the wall 27.3" cap height "Pottawattamie County" - 1/4" aluminum painted PMS _____ blue Stud mount flush to interior brick wall ** bucket truck required ** 85' GLG required to reach the installation location of this sign, truck cannot reach from the street and cannot back up the hill, will require partial street closure, customer to handle partial street closure ** city permit fee TBD	1	\$22,328.50	\$22,328.50
		Install:	Special	\$7,975.00
		Delivery:		\$0.00

Option #1 Total:	\$30,303.50
-------------------------	--------------------



Quote# : 29546

Submitted: 3/10/2023

SalesPerson: Deb Gorat

Item#	Description:	Qty	UnitPrice	Total
Option #2				
3	246.7"ht x 200"w exterior wall display SIDE OF BUILDING 164.7"ht logo - background fabricated 3" returns , feather to have 1" returns with custom painted finish - sides painted PMS _____ blue ** logo background to have fabrication breaks due to material sizes ** 4" returns behind "P" where applicable at locations where is off the background 27.3" cap height "Pottawattamie County" - fabricated 3" returns painted PMS _____ blue Stud mount flush to interior brick wall ** bucket truck required ** 85' GLG required to reach the installation location of this sign, truck cannot reach from the street and cannot back up the hill, will require partial street closure, customer to handle partial street closure ** city permit fee TBD	1	\$21,430.00	\$21,430.00
	Install:		Special	\$7,975.00
	Delivery:			\$0.00
Option #2 Total:				\$29,405.00

Item#	Description:	Qty	UnitPrice	Total
4	4' x 8' single sided exterior post and panel signs 4' x 8' x 1/4" depth white dibond sign panel with letters flat bed printed on the face UV coated Sign to install into the ground with two (2) 3" x 3" aluminum tube stock posts - posts painted PMS _____ blue ** sign permit TBD	2	\$1,639.60	\$3,279.20
	Install:		Special	\$1,200.00
	Delivery:			\$0.00
Total:				\$4,479.20

Item#	Description:	Qty	UnitPrice	Total
Option #1				
5	131.57"ht x 160"w exterior wall display 87.87"ht logo - background 3/8" aluminum painted PMS _____ blue ** logo background to have fabrication breaks due to material sizes Two piece flame logo - 1/4" dibond with custom painted fade colors - large flame piece flush mount to logo background - small flame piece projected 3/8" from the wall 27.3" cap height "Pottawattamie County" - 1/4" aluminum painted PMS _____ blue Stud mount flush to interior brick wall ** bucket truck required ** city permit fee TBD	1	\$7,433.50	\$7,433.50
	Install:		Special	\$4,700.00
	Delivery:			\$0.00
Option #1 Total:				\$12,133.50

Item#	Description:	Qty	UnitPrice	Total
Option #2				
5	131.57"ht x 160"w exterior wall display 87.87"ht logo - background fabricated 3" returns , feather to have 1" returns with custom painted finish - sides painted PMS _____ blue ** logo background to have fabrication breaks due to material sizes ** 4" returns behind "P" where applicable at locations where is off the background 27.3" cap height "Pottawattamie County" - fabricated 3" returns painted PMS _____ blue Stud mount flush to interior brick wall ** bucket truck required ** 85' GLG required to reach the installation location of this sign, truck cannot reach from the street and cannot back up the hill, will require partial street closure, customer to handle partial street closure ** city permit fee TBD	1	\$12,215.00	\$12,215.00
	Install:		Special	\$4,700.00
	Delivery:			\$0.00
Option #2 Total:				\$16,915.00



Quote# : 29546

Submitted: 3/10/2023

SalesPerson: Deb Gorat

**NOTE: Applicable city sales tax is not included in pricing above but will be added to final invoice upon completion of the job.*

**NOTE: Regarding Local Installs: all installation costs are based upon normal conditions. In the case of unexpected problems, actual costs may change slightly.*

**NOTE: 50% down payment required for completion of orders.*

**NOTE: production time is approximately 4 - 6 weeks from date of signed contract.*

**NOTE: quoted pricing valid for 30 days*

AUTHORIZED SIGNATURE	

TITLE	DATE

LEGAL NAME OF BUSINESS: _____

FEDERAL ID #: _____

Metal Logos signs are covered by a limited warranty. We will repair or replace any properly installed sign or sign part found to be defective, exclusive of transportation and installation costs, for one year. Thanks for the opportunity to quote on your project!

Inside
Main
Lobby

*The 12'4" width is the inside to inside column measurement. signage will need to fit centered between.

* The 16' height is my approximate guess. This can change.

12'4" - Column
inside to inside



Pottawattamie
County
Find Your Fire



16'

East
Side of
Courthouse

- * The 17' width is center to center of pillars
- * The height is the actual header height. Signage will need to fit inside of this measurement.

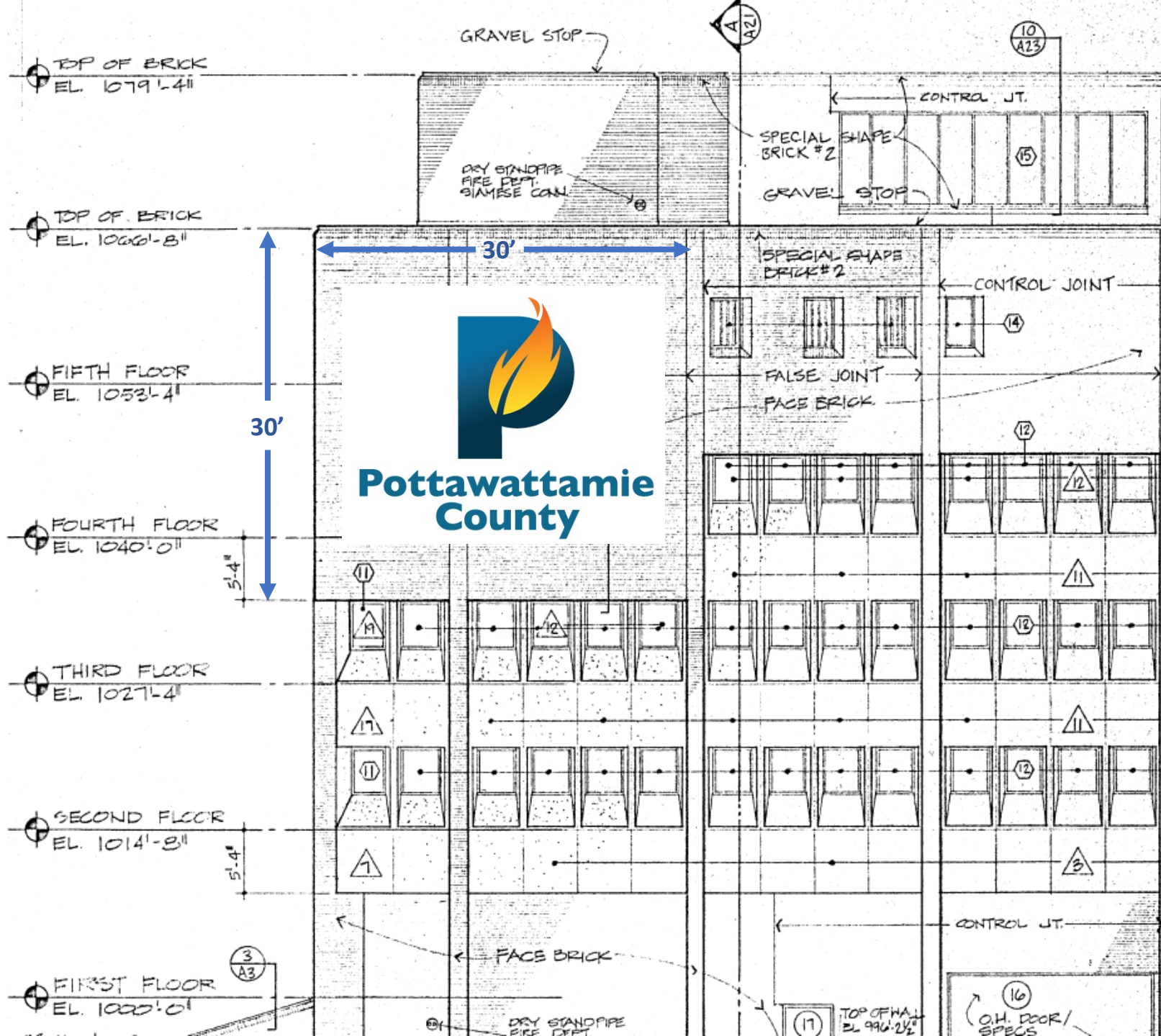


**West
Side of
Courthouse**

- * The 26'8" is the width of the brick façade, sign will need to fit centered within.
- The 30' height is my approximate guess. This can change.
- We also need the two signs that are circled in yellow. The size of the two signs should be close to 7' wide and 4' high approximately.



South
Side of
Courthouse



Other Business

Jana Lemrick/Director, Human resources; and Michael Williams, Jim Garbina, and Kim Gidley/FNIC

Discussion and/or decision on renewal of County Employee's Life/AD&D Insurance; Voluntary Life Benefit; Vision Insurance; Dental Insurance; and Long-Term Disability benefit.

Jana Lemrick/Director, Human resources; and Michael Williams, Jim Garbina, and Kim Gidley/FNIC

Discussion and/or decision on renewal of County Employee's Health Insurance.

Received/Filed

Fee Book (03/01/2023 - 03/31/2023)

Criteria: {FMXFUS01_RPT_POTT.TndrDate} >= #03/01/2023# AND {FMXFUS01_RPT_POTT.TndrDate} <= #03/31/2023#

	Count	Total Fund Amount
Recording Fees		
RMA	1077	\$1,081.00
E-Commerce	1077	\$1,081.00
Audit	327	\$1,715.00
Recording	1077	\$25,020.00
County Transfer Tax	172	\$12,073.58
State Transfer Tax	172	\$57,919.42
Photo Copies	31	\$636.00
Total For Recording Fees	3933	\$99,526.00
Other Fees		
COUNTY PASSPORT POSTAGE FUND	55	\$16,746.25
Total For Other Fees	55	\$16,746.25
Boats		
Boat Writing	22	\$147.50
Boat State	21	\$1,755.50
Boat Title County	16	\$200.00
Boat Title State	16	\$260.00
Boat Liens State	4	\$26.00
Use Tax	21	\$33,195.67
Boat Lien County	4	\$20.00
Road Pass	13	\$1,750.00
DNR Postage	13	\$28.00
Total For Boats	130	\$37,382.67
Hunt and Fish		
Hunt Fish State	1	\$6.00
Total For Hunt and Fish	1	\$6.00
ELSI		
ELSI Couny	41	\$486.25
ELSI State	21	\$2,409.00
Total For ELSI	62	\$2,895.25
Vitals		
Cert Copy County	61	\$2,640.00
Cert Copy State	61	\$7,260.00
Marriage County	38	\$152.00
Marriage State	38	\$1,178.00
Total For Vitals	198	\$11,230.00
Collected Total:		\$167,786.17
Charged Total:		\$28.00
Grand Total:		\$167,814.17

Recorder

	mr# 045355	Mar-23		ck# 5298
	Amount	Account #	Account Name	
✓	\$2,792.00	0001-1-07-8110-413000-000	Vital Records	
✓	\$1,081.00	0024-1-07-8110-400001-000	RMA	
✓	\$486.25	0001-1-07-8110-409000-000	ELSI	
✓	\$12,073.58	0001-1-07-8110-404000-000	Transfer Tax	
✓	\$25,656.00	0001-1-07-8110-400000-000	Office Fees	
✓	\$1,715.00	0001-1-07-8110-410000-000	Auditor Fees	
✓	\$147.50	0001-1-07-8110-402000-000	Boat Writing Fee	
✓	\$20.00	0001-1-07-8110-402000-000	Boat Liens	
✓	\$16,746.25	0001-1-07-8110-414000-000	Passports	
✓	\$28.00	0001-1-07-8110-415000-000	DNR Boat Postage	
✓	\$1,750.00	0001-1-07-8110-407000-000	ATV ROADPASS	
✓	\$6.00	0001-1-07-8110-417000-000	Hunting/Fishing License	
	\$0.00	001-1-07-8110-501000-000	Plat Books	
	\$0.00	001-1-07-8110-501000-000	Plat Books Postage	
	\$62,501.58	Total	Checks prepared by: A M	

SM

Committee Appointments

Update from Board members on Committee meetings from the past week.

Public Comments